

DKH | London | SE22

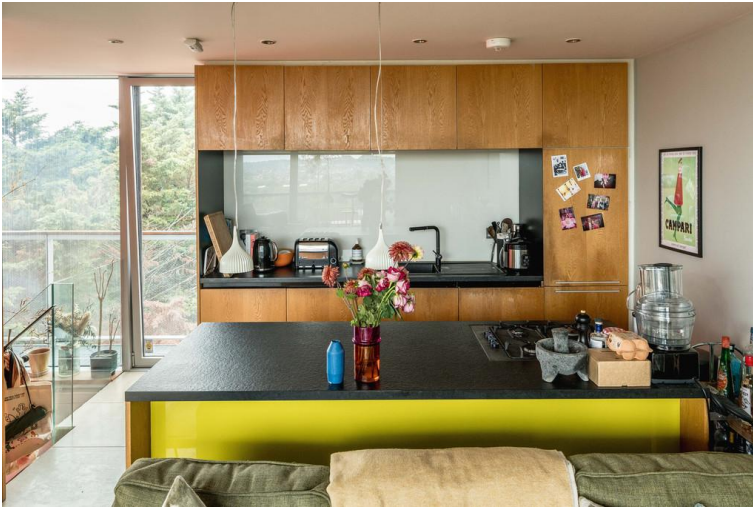
Leasehold

£685,000

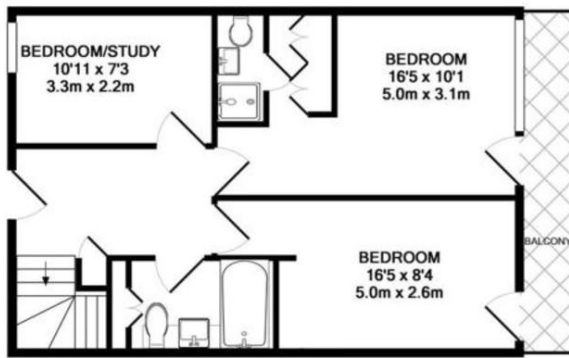
- Three bedroom apartment
- Split level
- Top two floors
- Two bathrooms
- Under ground parking
- Two balconies
- Amazing views
- Award winning architecture
- Denmark Hill
- East Dulwich



Stylish top floor eco-apartment in this stunning, award winning, architecturally designed building. Arranged over the top two floors, this penthouse apartment offers incredible skyline views. The accommodation is arranged to maximise space and light with the main living accommodation on the top floor to take advantage of the skyline, the living space is completely open plan. Downstairs there are three bedrooms, one has an en suite, plus a good sized family bathroom and separate laundry area. Both floors have balconies stretching across the south facing side of the building. There is secure gated car parking & cycle storage. Walking distance to Denmark Hill and East Dulwich station, shops and restaurants nearby.



Energy Efficiency Rating		
	Current	Potential
Very energy efficient - lower running costs		
(92+) A		
(81-91) B		
(69-80) C	77	80
(55-68) D		
(39-54) E		
(21-38) F		
(1-20) G		
Not energy efficient - higher running costs		



3RD FLOOR



**DOG KENNEL HILL THIRD FLOOR
TOTAL APPROX. FLOOR AREA 89.0 SQ.M. (958 SQ.FT.)**

Whilst every attempt has been made to ensure the accuracy of the floor plan contained here, measurements of doors, windows, rooms and any other items are approximate and no responsibility is taken for any error, omission, or mis-statement. This plan is for illustrative purposes only and should be used as such by any prospective purchaser. The services, systems and appliances shown have not been tested and no guarantee as to their operability or efficiency can be given.
Made with Metropix ©2010



4TH FLOOR

Viewing Arrangements

Strictly by appointment

Contact Details

121 Denmark Hill

London

SE5 8EN

www.urbanvillagehomes.co.uk

sales@urbanvillagehomes.com

020 3519 9121

Agents Note: Whilst every care has been taken to prepare these sales particulars, they are for guidance purposes only. All measurements are approximate and are for general guidance purposes only and whilst every care has been taken to ensure their accuracy, they should not be relied upon and potential buyers are advised to recheck the measurements