



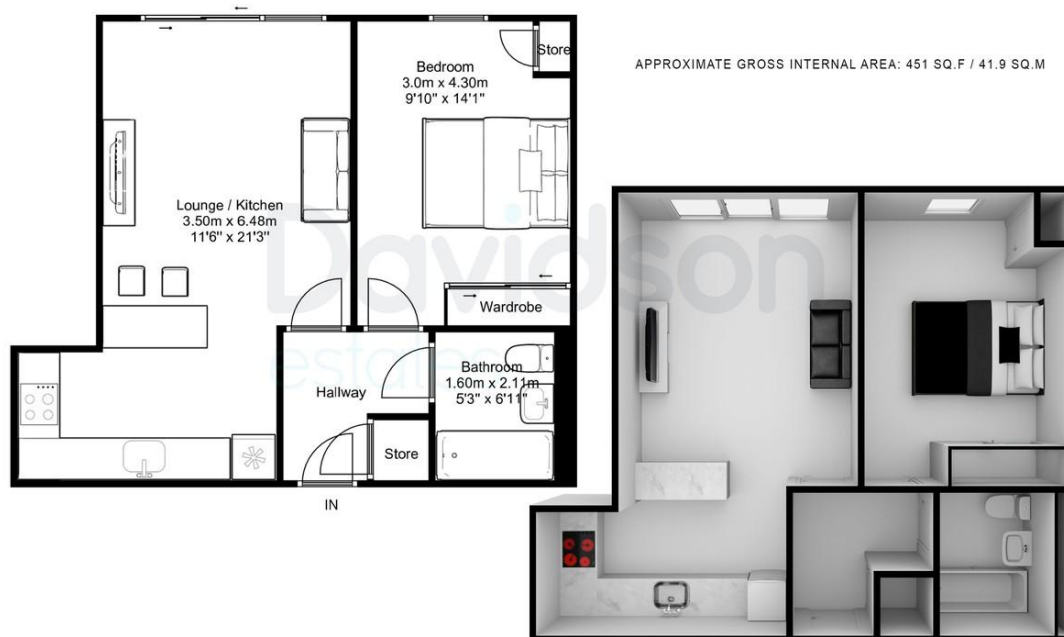
# BLOOMSBURY HOUSE, HIGHFIELD ROAD £210,000

BIRMINGHAM, B15 3EH

LEASEHOLD

HIGHFIELD GARDENS | One Bedroom | Ground Floor | Allocated Parking Space |  
Gated Development | Private Patio | Located on the Calthorpe Estate.

## Davidson



Floorplan measurements are for illustrative purpose only. Floor plan by [www.sebastiano.co.uk](http://www.sebastiano.co.uk).

### Energy Efficiency Rating

Score	Energy rating	Current	Potential
92+	A		
81-91	B	84   B	84   B
69-80	C		
55-68	D		
39-54	E		

# Davidson

OFFICE  
14 Frederick Road  
Birmingham  
West Midlands  
B15 1JD

0121 455 7727  
[info@davidsonstates.co.uk](mailto:info@davidsonstates.co.uk)  
[www.davidsonstates.co.uk](http://www.davidsonstates.co.uk)

Agents Note: Whilst every care has been taken to prepare these particulars, they are for guidance purposes only. All measurements are approximate and are for general guidance purposes only and whilst every care has been taken to ensure their accuracy, they should not be relied upon and potential buyers/tenants are advised to recheck the measurements