





Property Summary

Step into this grand halls adjoining semi-detached Victorian house, boasting a wealth of original features and a remarkable 70' garden - a rare find in the heart of Lewisham. The property exudes character and charm, with the potential for further extensions to create a fashionable large family room (side return).

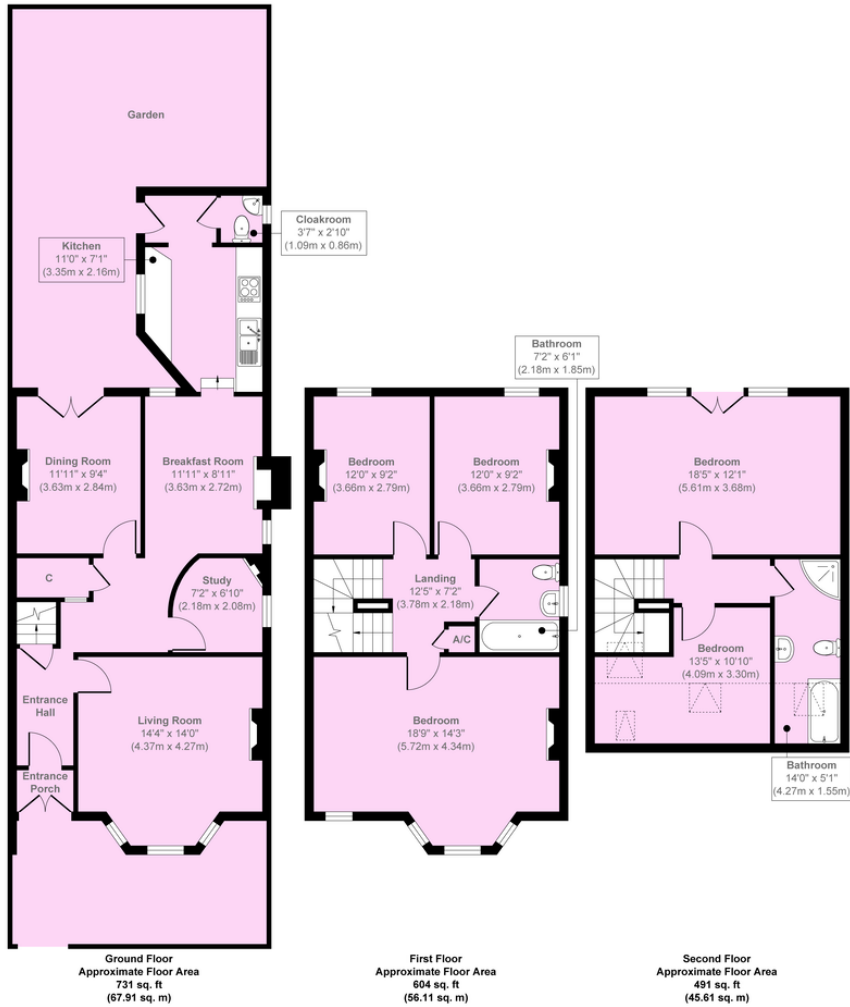
With ostentatious features including five double bedrooms and two bathrooms, this family home offers ample living space for the busy commuter. The upstairs loft has been elegantly extended, while downstairs, a convenient cloakroom adds a touch of practicality.

Nestled in a quiet street in Zone 2, South East London, this property is just moments away from Lewisham Station & DLR, providing easy access to the city. Nearby Ladywell, Hither Green, and Blackheath Village offer a vibrant range of amenities and further transport links, while the lush greenery of Manor Park, Ladywell Fields, and Blackheath Common provide the perfect retreat for relaxation and contemplation.

#AskBeaumont Viewings by appointment only.







Property Features

- PERIOD VICTORIAN HOUSE
- HALLS ADJOINING SEMI DETACHED
- 5 BEDROOMS
- 4 RECEPTION ROOMS
- 2 BATHROOMS
- DOWNSTAIRS CLOAKROOM
- OFF STREET PARKING (Small Car)
- 70' GARDEN
- ROOM TO EXTEND stpp
- MANY ORIGINAL FEATURES

Score	Energy rating	Current	Potential
92+	A		
81-91	B		
69-80	C		74 C
55-68	D	56 D	
39-54	E		
21-38	F		
1-20	G		

Approx. Gross Internal Floor Area 1826 sq. ft / 169.63 sq. m

Illustration for identification purposes only, measurements are approximate, not to scale.

Copyright © markbeaumont.com
Produced by Elements Property