

Grosvenor Court, Vale Road, Bournemouth,

BH1 3TA

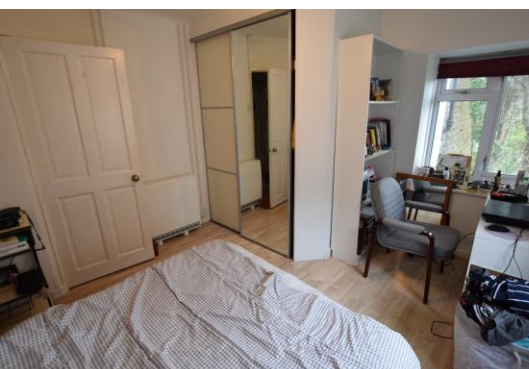
2 Bedrooms

house & son

www.houseandson.net

01202 242000

nick.b@houseandson.net



Features:

TWO DOUBLE
BEDROOMS

FULLY FURNISHED

RECENTLY
REDECORATED

DOUBLE GLAZING

ATTRACTIVE
WOOD EFFECT
LAMINATE
FLOORING
THROUGHOUT

BRIGHT & AIRY

GOOD LOCATION

Description:

EAST CLIFF – A FULLY FURNISHED two bedroom 3rd floor apartment (no lift) located in close proximity to both the Lansdowne and Boscombe Gardens. TWO DOUBLE BEDROOMS; lounge/diner; kitchen with electric oven/hob, washing machine, and fridge freezer; shower room with electric shower, W/C, and basin. Property has been RECENTLY REDECORATED, and benefits from both DOUBLE GLAZING & ATTRACTIVE WOOD EFFECT LAMINATE FLOORING THROUGHOUT. A bright and airy apartment in a convenient location. FULLY MANAGED & AVAILABLE NOW!

£1100 pcm

Available Now!