



Purves Road, London NW10

£875,000 Freehold

Welcome to Purves Road, one of Kensal Rise's most sought-after streets. This end-of-terrace Victorian home offers a rare opportunity to create something truly special in an unbeatable location. Spanning 1131 sq ft and set over two floors, the property features three genuine double bedrooms and is offered chain free. With a south-facing garden and the benefit of being an end-of-terrace, natural light floods the space and there's excellent potential to extend into the side return and loft (STPP), allowing you to reimagine the layout to suit your needs. The house is within easy reach of both Kensal Green and Kensal Rise stations and sits in the catchment for some of the area's best schools—ideal for families looking to settle in this vibrant and well-connected community. A blank canvas in every sense, this is a home where your vision can take shape. Viewers should note that the property will likely require some structural repairs during the course of ownership—but opportunities like this, in such a prime location, rarely come to market.

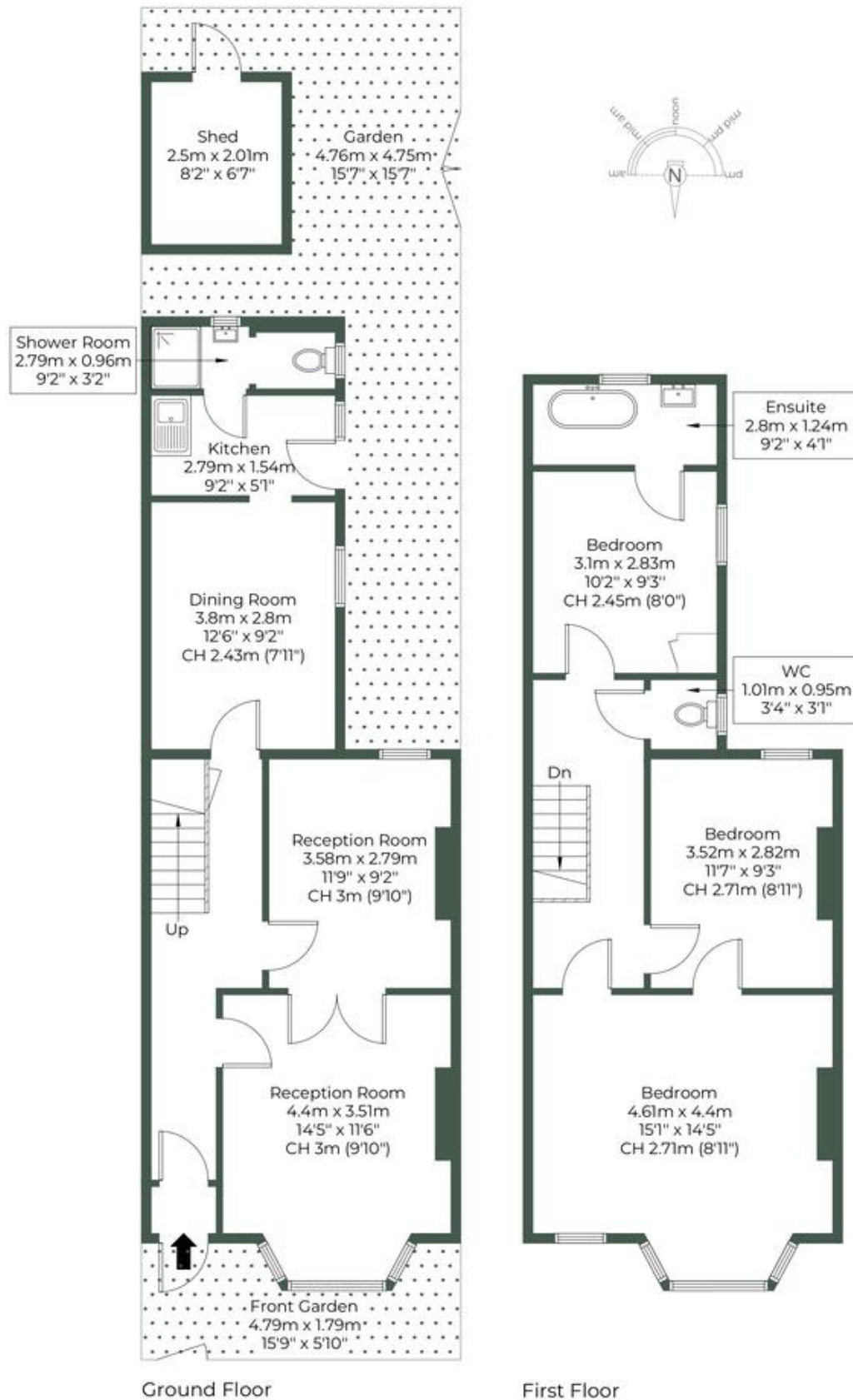
- End of terrace house
- Period home
- Three bedrooms
- Chain free
- Work required
- Potential to extend (STPP)
- 1131 sq ft
- Fantastic location
- South facing garden
- Close to shops and transport

PURVES ROAD, NW10 5TE

Approximate Gross Internal Area = 105.1 sq.m / 1131 sq.ft

Shed = 5 sq.m / 54 sq.ft

Total = 110.1 sq.m / 1185 sq.ft



M MILE

MONEY LAUNDERING REGULATIONS 2003: Intending purchasers will be asked to produce identification documentation at a later stage and we would ask for your co-operation in order that there will be no delay in agreeing the sale.

General: While we endeavour to make our sales particulars fair, accurate and reliable, they are only a general guide to the property and, accordingly, if there is any point which is of particular importance to you, please contact the office and we will be pleased to check the position for you, especially if you are contemplating travelling some distance to view the property.

Measurements: These approximate room sizes are only intended as general guidance. You must verify the dimensions carefully before ordering carpets or any built-in furniture.

Services: Please note we have not tested the services or any of the equipment or appliances in this property, accordingly we strongly advise prospective buyers to commission their own survey or service reports before finalising their offer to purchase.