



30, Carpenters | Billingshurst | West Sussex | RH14 9RB

 **FOWLERS**
ESTATE AGENTS



30, Carpenters

Billingshurst | West Sussex | RH14 9RB

£495,000

Nestled in the highly sought-after area of Carpenters, this beautifully extended family home offers generous living space and an enviable location. The neighbourhood is well-regarded for its excellent access to the High Street, reputable local schools, the leisure centre, and the nearby railway station. A spacious entrance porch welcomes you into the home, leading onto a large dining room and an impressive full-length living room. This bright and airy space features double-glazed patio doors that flow seamlessly into the conservatory and out to the rear garden. The kitchen is extensively fitted with ample storage and workspace, and a sizeable utility room adds to the home's practicality. Upstairs, the landing provides access to four well-proportioned bedrooms. The main bedroom benefits from an en-suite shower room, while the remaining bedrooms are served by a family bathroom. Outside to the rear is a low-maintenance garden with a spacious patio, a lawned area, and a raised terrace, it's the perfect setting for outdoor dining or unwinding on a warm summer evening.



Entrance Porch

Door to:

Dining Room

This large room offers a wonderful dining and relaxation space and leads directly into the kitchen. Staircase to first floor and door to:

Living Room

Double aspect room with a double-glazed picture window overlooking the front and to the rear are double glazed patio doors leading to the conservatory, there is a gas fireplace with brick surround and solid wood mantel.

Conservatory

Accessed from the lounge, this partial brick conservatory is a lovely addition and provides access on to the patio.

Kitchen

The kitchen comprises: worksurface with inset stainless steel one and a half sink unit with mixer tap having base cupboards under, further matching worksurface with inset five ring gas hob and fitted double oven under, base cupboards and drawers, range of matching eye-level units, extractor hood over hob, space for a dishwasher, double glazed window overlooking garden, opening to:

Utility Room

Double glazed door leading to the rear garden and additional double glazed window to side, worksurface with space and plumbing for tumble dryer, washing machine, eye-level and base cupboards, space for tall fridge/freezer.

Landing

With doors to four double bedrooms, airing cupboard and a bathroom along with access to the loft space

Main Bedroom

Double room with double glazed windows, radiator and built-in wardrobe, door to:

En-suite

Tiled shower cubicle with mixer shower, vanity unit with inset wash hand basin having storage under, w.c., chrome heated towel rail, double glazed window.

Bedroom Two

Double glazed window, radiator.

Bedroom Three

Double glazed window, radiator.

Bedroom Four

Double glazed window, radiator.

Family Bathroom

Fully tiled walls and a white suite comprising: panelled bath, electric mixer shower over bath, pedestal wash hand basin, w.c., radiator, double glazed window.

Front Garden

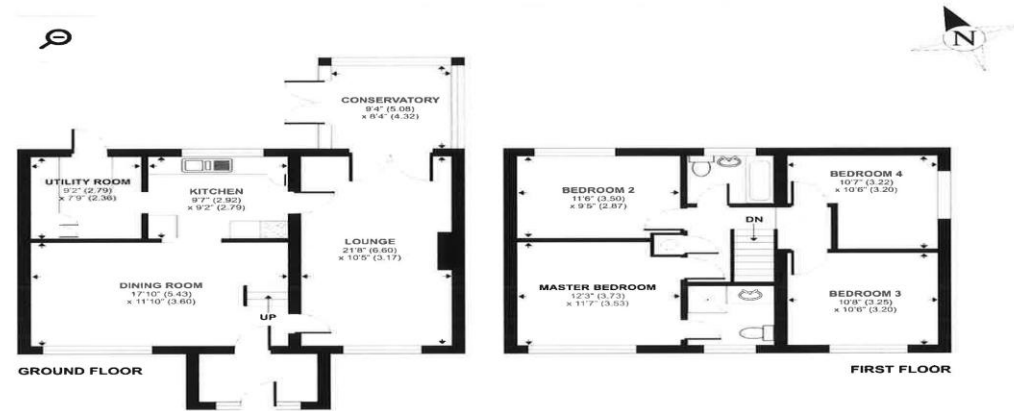
The front garden consists of an area of lawn, a side gate and off road parking.

Rear Garden

The rear garden can be accessed from the utility and the conservatory. The garden is terraced offering a patio, area of lawn and private seating area. There is also a side gate with access to the front.

EPC RATING= TBC
COUNCIL TAX= E





30 Carpenters, Billingshurst

APPROX. GROSS INTERNAL FLOOR AREA 1404 SQ FT / 130.5 SQM

Whilst every attempt has been made to ensure the accuracy of the floor plans contained here, measurements of doors, windows and rooms are approximate and no responsibility is taken for any error, omission or mis-statement. These plans are for identification purposes only and are not drawn to scale.



Fowlers 74 High Street, Billingshurst, West Sussex, RH14 9QS www.fowleronline.co.uk billingshurst@fowleronline.co.uk 01403 786787

"We'll make you feel at home..."

Managing Director:
Marcel Hoad



Important Notice

1. Fowlers wish to inform all prospective purchasers that these sales particulars do not form part of any contract and have been prepared in good faith to give a fair overall viewing of the property.
2. We have not undertaken a structural survey, nor tested that the services, appliances, equipment or facilities are in good working order.
3. Fowlers cannot verify that any necessary consents have been obtained for conversions, extensions and other alterations such as underpinning, garaging and conservatories etc.

Any reference to such alterations is not intended as a statement that any necessary planning or building consents have been obtained and if such details are fundamental to a purchase, then prospective buyers should contact this office for further information or make further enquiries on their own behalf.

4. Any area, boundary, distances or measurements referred to are given as a guide only and should not be relied upon. If such details are fundamental to a purchase, please contact this office for further information.

5. The photographs shown in these details show only certain aspects of the property at the time they were taken. Certain aspects therefore may have changed and it should not be assumed that the property remains precisely as displayed in the photographs.
6. Fowlers cannot verify whether the property and its grounds are subject to any restrictive covenants, rights of way, easements etc, and purchasers are advised to make further enquiries to satisfy themselves on these points.