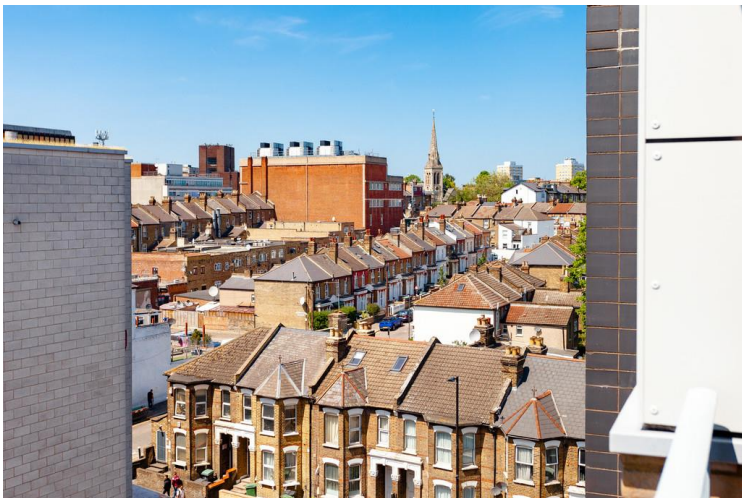


Redvers Road, N22 6EW

£1,700 PCM

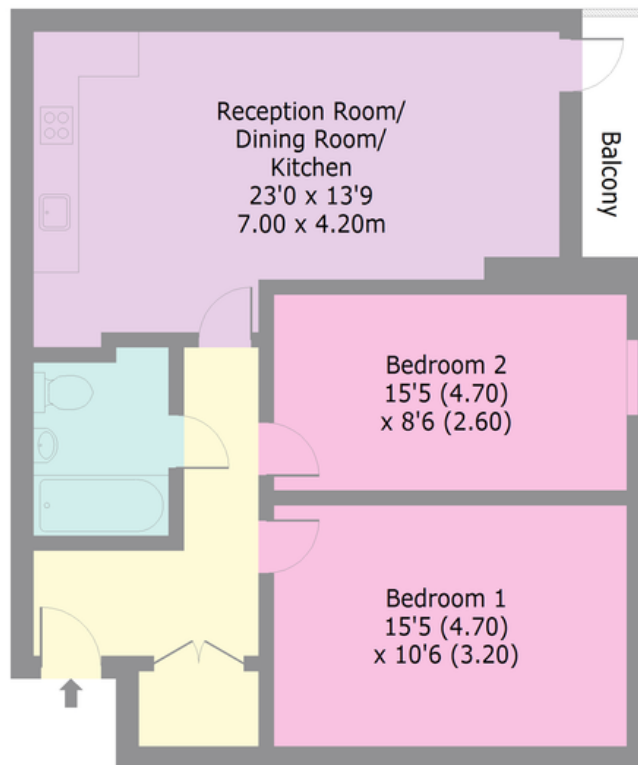
A modern two bedroom apartment set on the sixth floor in this desirable private gated development in the heart of Wood Green. The property benefits from a spacious reception room/kitchen leading to a private balcony with stunning views of the surrounding area, perfect for the summer months to enjoy a glass of wine. Further benefits include two double bedrooms, contemporary bathroom & abundance of storage space. Offering access to the vibrant Wood Green shopping area with all its bars and restaurants, Alexandra Palace BR, and Wood Green Underground station (Piccadilly Line) right on the doorstep, providing access into the heart of London in 15 minutes.

****Available end of June****



Omnibus House, Redvers Road, N22

Approx. Gross Internal Area (Including Balcony) 783 Sq Ft - 72.8 Sq M
Approx. Gross Internal Area (Excluding Balcony) 756 Sq Ft - 70.2 Sq M



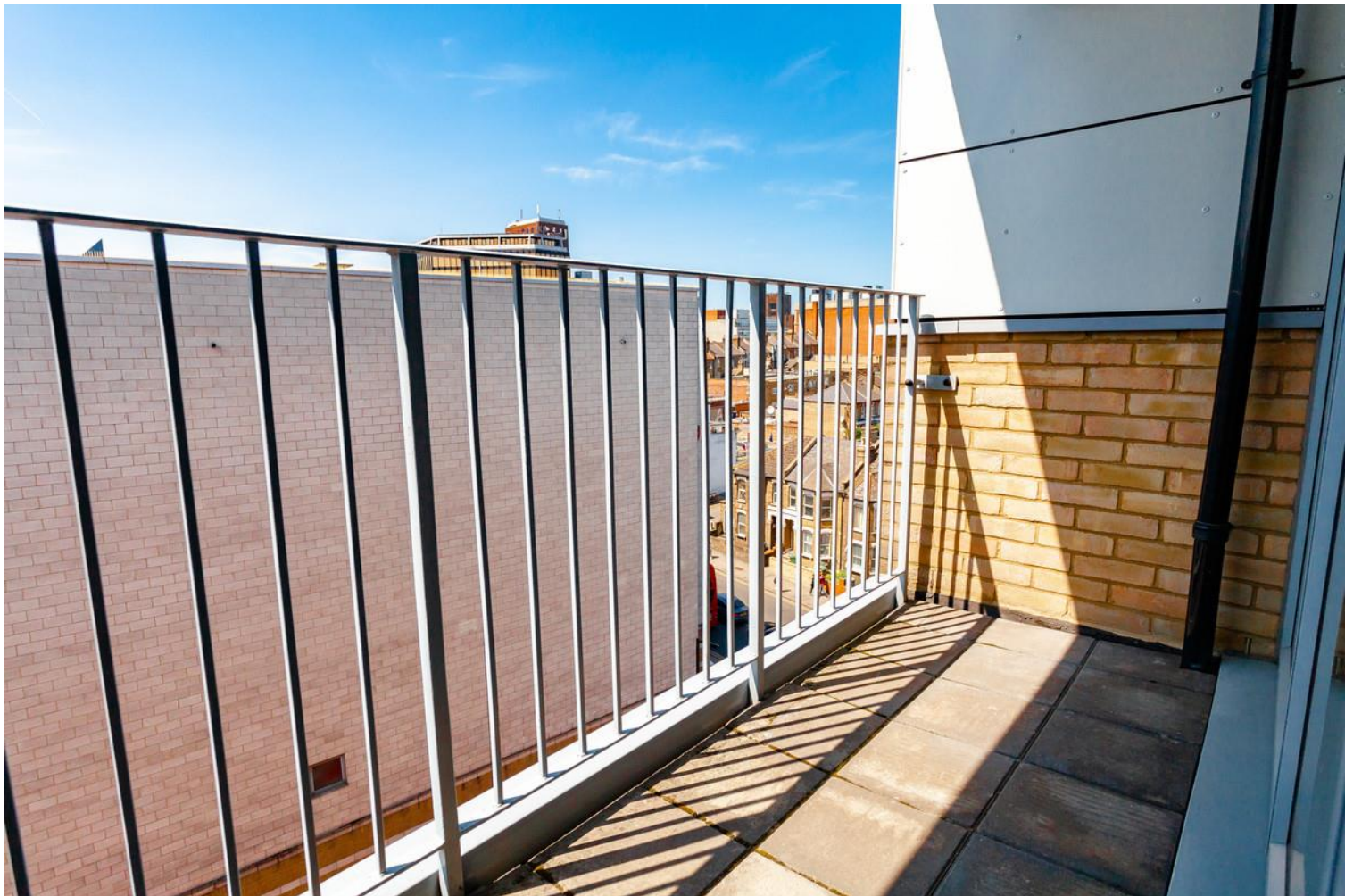
SIXTH FLOOR



Whilst every attempt has been made to ensure the accuracy of the floor plan contained here, measurements of doors, windows and rooms are approximate and no responsibility is taken for any error, omission or misstatement. These plans are for representation purposes only as defined by RICS Code of Measuring Practice and should be used as such by any prospective purchaser. Specifically no guarantee is given on the total square footage of the property if quoted on this plan. Any figure given is for initial guidance only and should not be relied on as a basis of valuation.

Produced for Wilkinson Byrne REF: 563057

Date: 29/5/2023



2



Bedrooms

1



Receptions

1



Bathrooms

Yes



Balcony

Council Tax Band: D

Bounds Green Office

**3 Latham Court
Brownlow Road
London N11 2ES**

0208-365-8900

boundsgreen@wilkinsonbyrne.com

Turnpike Lane Office

**8 Turnpike Parade
Green Lanes
London N15 3EA**

0208-888-0022

Turnpikelane@wilkinsonbyrne.com