



Denmark Hill | London | SE5 8EJ

£1,950 pcm

- Two double bedrooms
- Open plan
- Private balcony
- Lots of natural light
- Modern bathroom
- Excellent location
- Denmark Hill Station
- Local amenities
- Ruskin Park
- Excellent bus routes

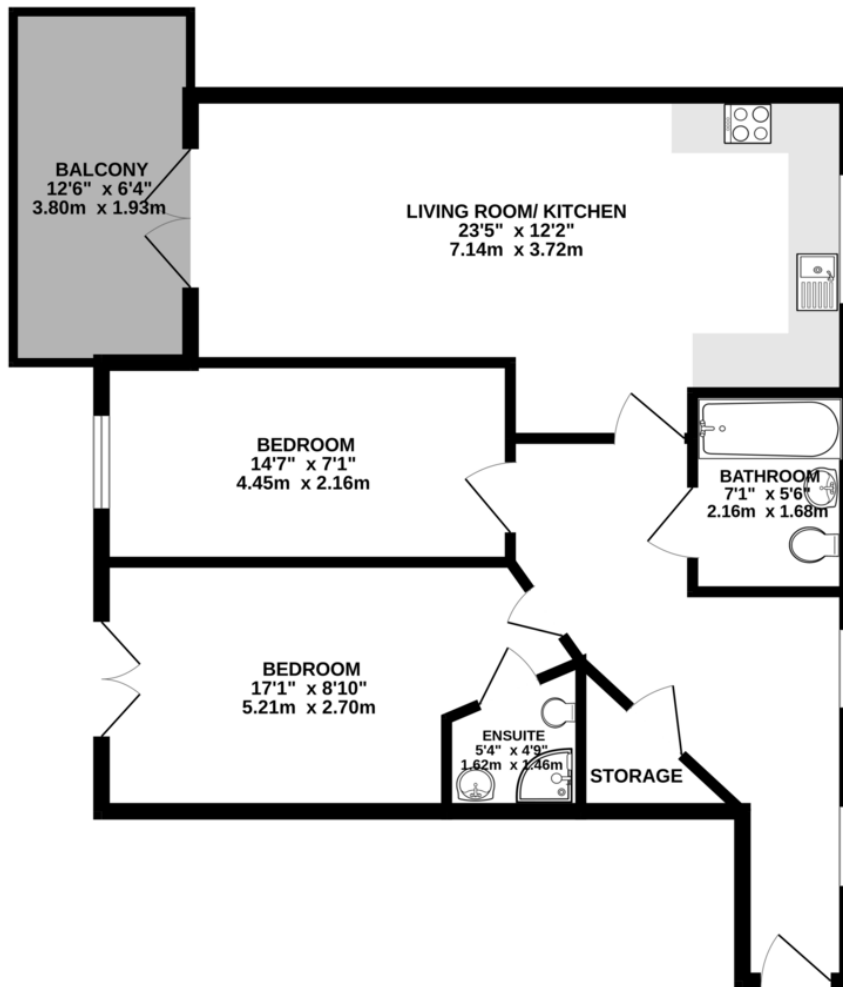


Modern two bed flat on Denmark Hill. Large open plan kitchen / living area with large sliding doors leading out on to a private balcony. Large sliding doors and high windows allow an abundance of natural light. Underfloor heating throughout. Fantastic local amenities; Camberwell Green is a brief stroll away, whilst Heme Hill, Lordship Lane and Peckham are all easily accessible on foot. Ideal for anybody working at nearby King's College Hospital. Denmark Hill station is on your doorstep, with trains to Victoria in under ten minutes and London Bridge in under twenty. Perfect for sharers.



%epcGraph_c_1_300%

SECOND FLOOR
700 sq.ft. (65.0 sq.m.) approx.



TOTAL FLOOR AREA : 700sq.ft. (65.0 sq.m.) approx.

Whilst every attempt has been made to ensure the accuracy of the floorplan contained here, measurements of doors, windows, rooms and any other items are approximate and no responsibility is taken for any error, omission or mis-statement. This plan is for illustrative purposes only and should be used as such by any prospective purchaser. The services, systems and appliances shown have not been tested and no guarantee as to their operability or efficiency can be given.
Made with Metropix 6/2025

Viewing Arrangements

Strictly by appointment

Contact Details

121 Denmark Hill

London

SE5 8EN

www.urbanvillagehomes.co.uk

lettings@urbanvillagehomes.com

020 3519 9121

Agents Note: Whilst every care has been taken to prepare these sales particulars, they are for guidance purposes only. All measurements are approximate and for general guidance purposes only and whilst every care has been taken to ensure their accuracy, they should not be relied upon and potential buyers are advised to recheck the measurements