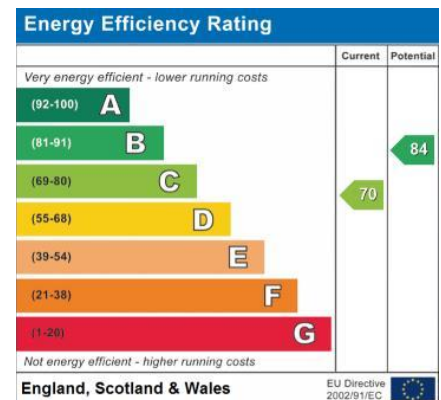
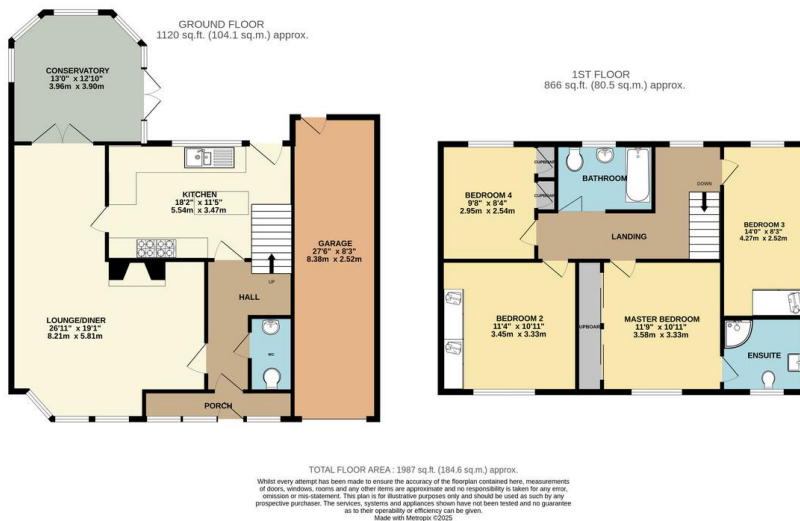




FOR SALE

4 Bed Semi-Detached House in Rosemead Drive, Oadby LE2 5SB
£375,000

Situated in the highly desirable area of Oadby this impressive extended four bedroom semi detached family home offers light and spacious living throughout. Highlights include a stylish kitchen diner, a relaxing conservatory, and a master bedroom complete with en-suite shower room. Set on a generous landscaped plot with ample off road parking and a garage, this is the perfect family home. Contact Phillips George today to arrange your viewing.



- Extended Family Home
- Substantial Plot
- Semi Detached
- Four Bedrooms
- Oadby
- Master Ensuite
- Kitchen / Diner
- Garage

Agents Note: Whilst every care has been taken to prepare these sales particulars, they are for guidance purposes only. All measurements are approximate and for general guidance purposes only and whilst every care has been taken to ensure their accuracy, they should not be relied upon and potential buyers are advised to recheck the measurements.

