




 4  2  2
Waun Hir, Efail Isaf Pontypridd
offers over £600,000

 peter
alan

01443 222851
talbotareen@peteralan.co.uk



About the property

We are pleased to present to the market this immaculate, detached house for sale. The property boasts four bedrooms, two bathrooms, and a single reception room, making it an ideal home for families.

The spacious master bedroom comes complete with an en-suite, offering additional privacy and convenience. The remaining bedrooms comprise of two doubles and a single, all of which are tastefully decorated and offer ample space for furnishings.

The open-plan kitchen is a true heart of the home, offering an elegant kitchen island, utility room, and abundant natural light. This space has been designed to the highest standards, providing a perfect setting for both everyday living and entertaining. Also benefitting from a downstairs bathroom too!

The property is located in a sought-after location, surrounded by local amenities, green spaces, and walking routes. This location offers a blend of tranquillity and convenience, making it a desirable place to live.

Additional unique features of this property include EV charging and air conditioning units, demonstrating the property's modern and thoughtful design. Furthermore, the property is low maintenance, allowing you to focus on enjoying your new home.

Accommodation

Kitchen

8' 5" x 30' 1" (2.57m x 9.17m)

Living Room

14' 4" x 11' 4" (4.37m x 3.45m)

Pantry

7' 8" x 3' 6" (2.34m x 1.07m)

Sitting Room

10' 4" x 7' 8" (3.15m x 2.34m)

Bedroom 1

11' 8" x 11' 4" (3.56m x 3.45m)

En Suite

5' 2" x 8' 5" (1.57m x 2.57m)

Bedroom 2

11' 8" x 12' 1" (3.56m x 3.68m)

Bedroom 3

11' 8" x 8' 5" (3.56m x 2.57m)

Bedroom 4

7' 5" x 8' 5" (2.26m x 2.57m)

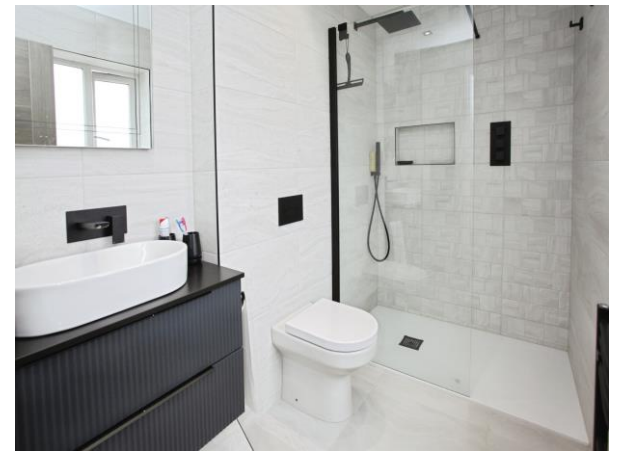
Bathroom

6' 2" x 5' 5" (1.88m x 1.65m)









01443 222851

talbotgreen@peteralan.co.uk



This floor plan is for illustrative purposes only. It is not drawn to scale. Any measurements, floor areas (including any total floor area), openings and orientation are approximate. No details are guaranteed, they cannot be relied upon for any purpose and they do not form part of any agreement. No liability is taken for any error, omission or misstatement. A party must rely upon its own inspection(s). Powered by www.focalagent.com

Important Information

Note while we endeavour to make our sales details accurate and reliable, if there is any point which is of particular interest to you, please contact the office and we will be pleased to confirm the position for you. We have not personally tested any apparatus, equipment, fixtures, fittings or services and cannot verify they are in working order or fit for their purposes. Nothing in these particulars is intended to indicate that carpets or curtains, furnishings or fittings, electrical goods (whether wired or not). Gas fires or light fittings or any other fixtures not expressly included form part of the property offered for sale. This computer generated Floorplan, if applicable, is intended as a general guide to the layout and design of the property. It is not to scale and should not be relied upon for dimensions. Tenure: We cannot confirm the tenure of the property as we have not had access to the legal documents. The buyer is advised to obtain verification from their solicitor or surveyor.

Peter Alan Limited is registered in England and Wales under company number 2073153, Registered Office is Cumbria House, 16-20 Hockliffe Street, Leighton Buzzard, Bedfordshire, LU7 1GN. VAT Registration Number is 500 2481 05. For activities relating to regulated mortgages and non-investment insurance contracts, Peter Alan Limited is an appointed representative of Connells Limited which is authorised and regulated by the Financial Conduct Authority. Connells Limited's Financial Services Register number is 302221. Most buy-to-let mortgages are not regulated.

