



Limewood Grove, North Gosforth, Newcastle   **Offers Over £225,000**









## Limewood Grove, North Gosforth, Newcastle

**Offers Over £225,000**

### Property Description

A simply stunning extended five bedroom family home and is situated in a popular residential location, offering excellent living accommodation and local transport and amenities. One of the key features to this property is the modern fitted kitchen and a the spacious L shaped lounge. The property also consists of a further reception room, a useful utility room with w/c, five bedrooms, a family bathroom and a garage. Other features include off street parking a fantastic rear garden with a fish pond and gas central heating. A viewing is highly advised to appreciate the size and layout. EPC Awaited

### Our View

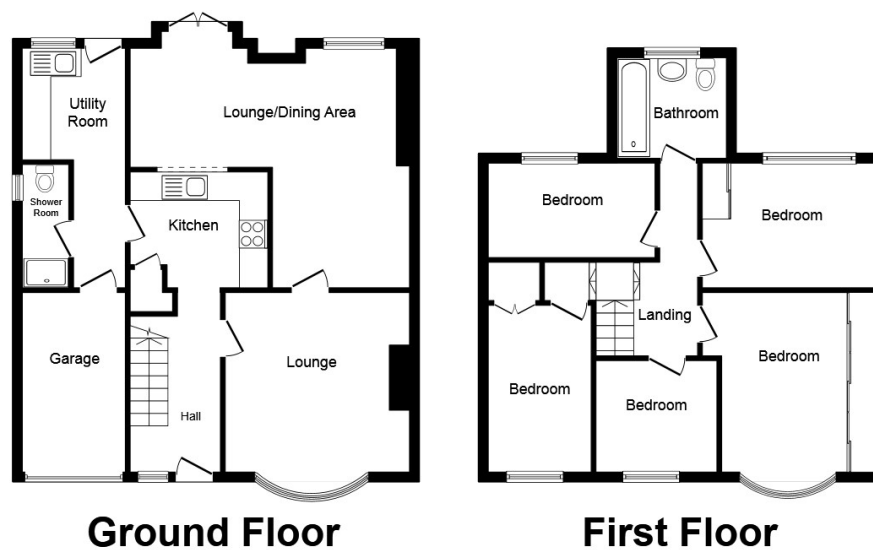
In our opinion this is a beautiful family home.

### Location

The property is situated within Hazlerigg, which has access to Wideopen. There are further facilities and amenities available within Gosforth and Newcastle city centre. Schools are available within the area and the A1 western bypass provides road links to the region and beyond. Local bus links connect to Gosforth and the metro rail network.



**EPC Awaited**  
**For full EPC please contact the branch**



This plan is for illustration purposes only and may not be representative of the property.  
Plan not to scale.

Powered by [audioagent.com](http://audioagent.com)

IMPORTANT NOTE TO PURCHASERS: We endeavour to make our sales particulars accurate and reliable, however, they do not constitute or form part of an offer or any contract and none is to be relied upon as statements of representation or fact. The services, systems and appliances listed in this specification have not been tested by us and no guarantee as to their operating ability or efficiency is given. All measurements have been taken as guide to prospective buyers only, and are not precise. Floor plans where included are not to scale and accuracy is not guaranteed. If you require clarification or further information on any points, please contact us, especially if you are travelling some distance to view. Fixtures and fittings other than those mentioned are to be agreed with the seller.

Your Move is a trading name of [your-move.co.uk](http://your-move.co.uk), registered in England at Newcastle House, Albany Court, Newcastle Business Park, Newcastle upon Tyne NE4 7YB (number 01864469).

\*Calls may be recorded and/or monitored for training and/or security purposes.

192-194 High Street, Gosforth, Newcastle Upon  
Tyne, NE3 1HD  
0191 284 5761 \* [Gosforth@your-move.co.uk](mailto:Gosforth@your-move.co.uk)

