



Transom Close, Surrey Quays

Asking Price £460,000 Leasehold





Transom Close, Surrey Quays

Enjoying an extended lease and wonderful views, this two bed / two bath quayside apartment offers comfortable accommodation in a small development along the edge of South Dock Marina. The property has been modernised internally with two fully tiled bathrooms and updated kitchen with natural light and ventilation. The windows have been recently replaced with uPVC double glazed units throughout and there is wooden flooring throughout the living areas. Offered for sale chain free and with vacant possession, this property makes a great starter home complete with residents' parking, secure entry gates and a close proximity to the Thames Clipper at Greenland Pier.

- Two Bedroom Apartment
- Two Bathrooms
- Direct Views Over Marina
- Automated Entrance Gates
- Fully Double Glazed
- Extended Lease

South East London
020 7231 5050

Email southeast@o-j.co.uk

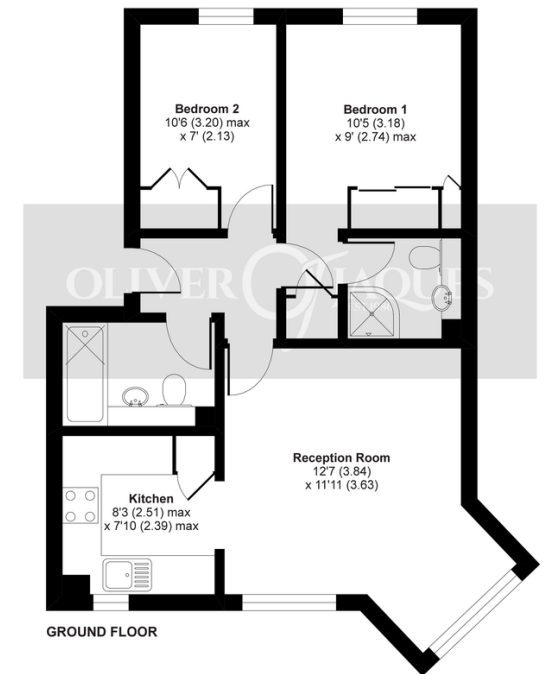
229-231 Lower Road, London, SE16 2LW

web www.o-j.co.uk

Every care has been taken with the preparation of this brochure but it is for general guidance only and complete accuracy cannot be guaranteed. If there is any point, which is of importance professional verification should be sought. This brochure does not constitute a contract or part of a contract. We are not qualified to verify tenure of property. Prospective purchasers should seek clarification from their solicitor or verify the tenure of this property for themselves by visiting www.landregisteronline.gov.uk. The mention of any appliances, fixtures or fittings does not imply they are in full working order. Photographs are reproduced for general information and it cannot be inferred that any item shown is included in the sale. All dimensions are approximate. Walking times are taken from Google Maps and measured from the centre of the postcode, which may differ slightly from the individual property.

Transom Close, London, SE16

APPROX. GROSS INTERNAL FLOOR AREA 556 SQ FT 51.6 SQ METRES



GROUND FLOOR

Whilst every attempt has been made to ensure the accuracy of the floor plan contained here, measurements of doors, windows and rooms are approximate and no responsibility is taken for any error, omission or misstatement. These plans are for representation purposes only as defined by RICS Code of Measuring Practice and should be used as such by any prospective purchaser. Specifically no guarantee is given on the total square footage of the property if quoted on this plan. Any figure given is for initial guidance only and should not be relied on as a basis of valuation.

Copyright nichecom.co.uk 2020 Produced for Oliver Jaques REF : 581800

