

Asking Price **£350,000**

tel: **01442 214151**



Widmore Drive, Adeyfield, Hemel Hempstead HERTS HP2 5JJ

Clements are delighted to offer this large three bedroom EXTENDED End of Terrace property offering very spacious room sizes and set in this popular Adeyfield location ideally situated for good local shops and amenities. The property offers off street parking to front, double glazing, gas central heating, a good sized garden and NO UPPER CHAIN. Viewing Essential!

- End of Terrace Property
- Three Bedrooms
- Extended
- Spacious Room Sizes
- Downstairs Cloakroom



Property Description

Clements are delighted to offer this large three bedroom EXTENDED End of Terrace property offering very spacious room sizes and set in this popular Adeyfield location ideally situated for good local shops and amenities. The property offers off street parking to front, double glazing, gas central heating, a good sized garden and NO UPPER CHAIN. Viewing Essential!

ENTRANCE PORCH

Door leading to:

ENTRANCE HALLWAY

Stairs leading to the first floor, doors to the Lounge and kitchen

LOUNGE/DINER 21' 9" x 18' 11" (6.63m x 5.77m)

A good sized 'L' shape room with wall mounted radiators, fitted gas fire, double glazed windows to rear and double glazed patio doors to side leading on to the garden.

KITCHEN 11' 5" x 9' 3" (3.48m x 2.82m)

A good sized kitchen area with a range of units with inset sink with drainer, built in cupboard, tiled floor, window to the front. Door leading to:

LOBBY

Door to the side alley way and door leading to:

CLOAKROOM

Low level WC.

FIRST FLOOR LANDING

Doors to the bedrooms and bathroom, entrance to the loft.

MASTER BEDROOM 12' 5" x 9' 9" (3.78m x 2.97m)

A good sized room with built in wardrobes, wall mounted radiator, window to front.

BEDROOM TWO 10' 6" x 9' 3" (3.2m x 2.82m)

A built in wardrobe/cupboard, window to the rear, wall mounted radiator.

BEDROOM THREE 9' 4" x 7' 3" (2.84m x 2.21m)

Window to rear, wall mounted radiator.

BATHROOM

Comprising a panel enclosed bath, pedestal wash hand basin, low level WC, tiled walls, frosted window to front.

OUTSIDE

FRONT GARDEN

Block paving to front offering parking for several cars, pathway to the front door and access to the side.

REAR GARDEN

A good sized patio area leading to a mainly laid to lawn garden, brick built shed, various plants and shrubs.



Tenure **Freehold**

Council Tax Band

Viewing Arrangements **Strictly by appointment**

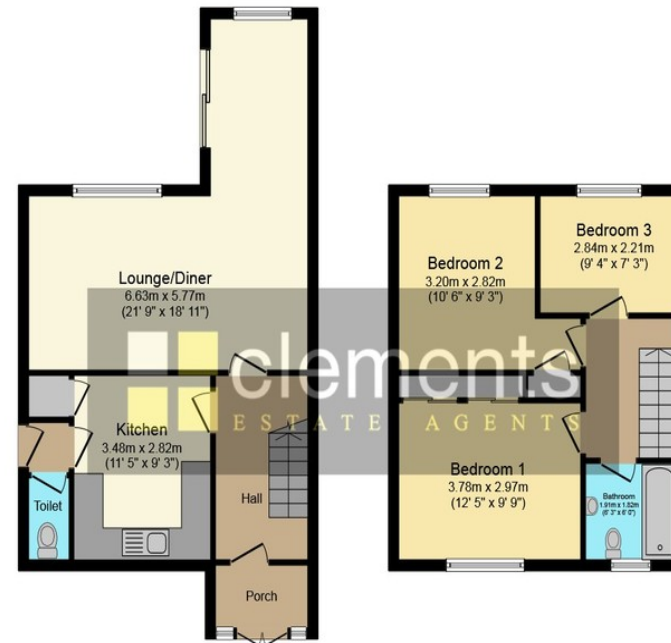
Contact Details

142 Marlowes
Hemel Hempstead
Hertfordshire
HP1 1EZ

Email: sales@clementsestateagents.co.uk

Tel: 01442 214151

www.clementsestateagents.co.uk



Ground Floor

Floor area 48.8 sq. m. (525 sq. ft.)
approx

First Floor

Floor area 39.6 sq. m. (426 sq. ft.)
approx

Total floor area 88.4 sq. m. (952 sq. ft.) approx

This Floor Plan is for illustration purposes only and may not be representative of the property. The position and size of doors, windows and other features are approximate. Unauthorized reproduction prohibited. © PropertyBOX

Agents Note: Whilst every care has been taken to prepare these sales particulars, they are for guidance purposes only. All measurements are approximate and are for general guidance purposes only and whilst every care has been taken to ensure their accuracy, they should not be relied upon and potential buyers are advised to recheck the measurements.