



The Greenway,
Hurst Green,
RH8 0JZ

Guide price of £425,000



3



1



1

Robert
Leech. 

The Greenway, Hurst Green, RH8 0JZ

Well presented throughout this mid-terraced property presents a brilliant opportunity for first time buyers and investors alike.

The ground floor offers open plan living with bright living room to the front and a well equipped fitted kitchen to the rear. The kitchen is made up of traditional wall and base units with plenty of space for appliances and offers views over the low maintenance rear garden. The downstairs accommodation also benefits from a good sized entrance hall with ample built in storage.

Upstairs there are three bedrooms and a family bathroom, which includes a bath complete with shower and vanity unit hand basin. The W/C is located in a separate room next door.

Outside there are low maintenance gardens to the front and the rear with a brick built storage shed in the rear garden.

- CHAIN FREE SALE
- Freehold
- Mid-terraced house
- 3 bed, 1 bath, 1 recep
- 0.7 miles to Hurst Green Station
- Living space 812 sq ft
- Low maintenance garden
- Council Tax Band C £1,922.47
- Tandridge District Council
- Quiet residential location



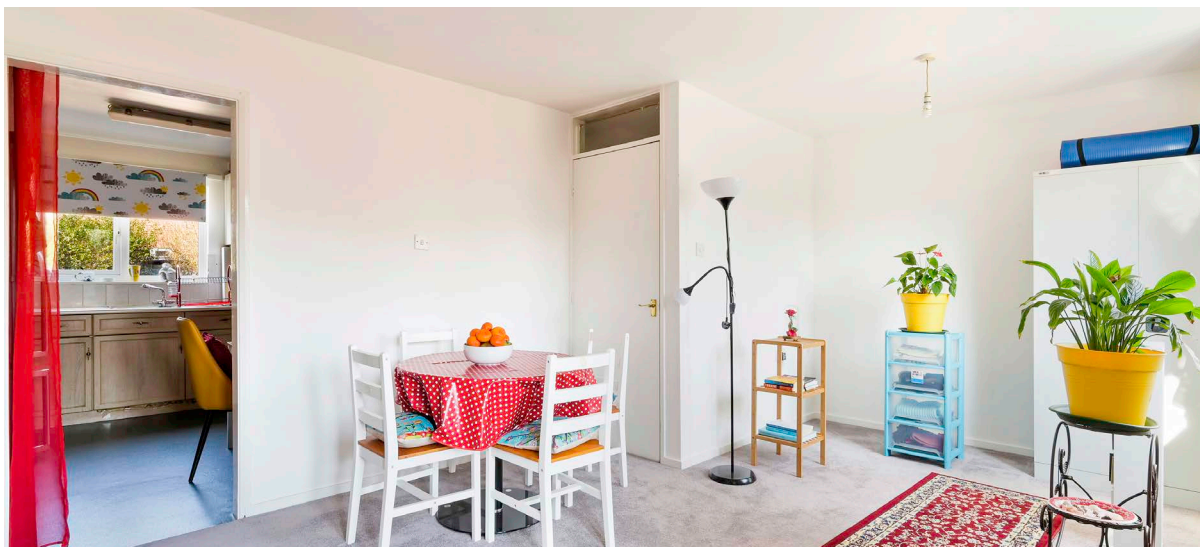
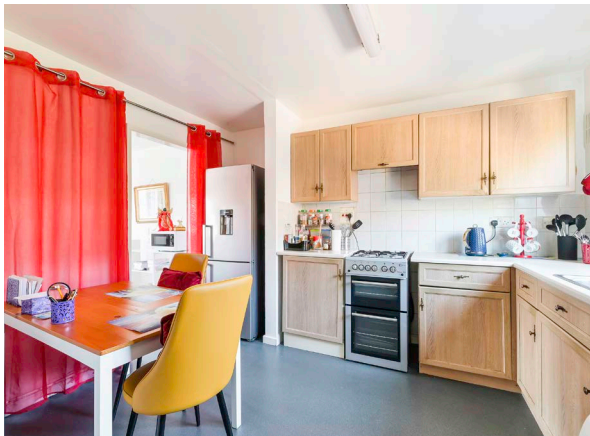
2.1 miles
Oxted



16.2 miles
Gatwick
Airport



0.7 miles
Hurst Green
Mainline
Station



OXTED
72 Station Road East,
Oxted,
Surrey RH8 0PG
01883 717272

REIGATE
1-3 High Street,
Reigate,
Surrey RH2 9AA
01737 246246

LINGFIELD
27 High Street,
Lingfield,
Surrey RH7 6AA
01342 837783

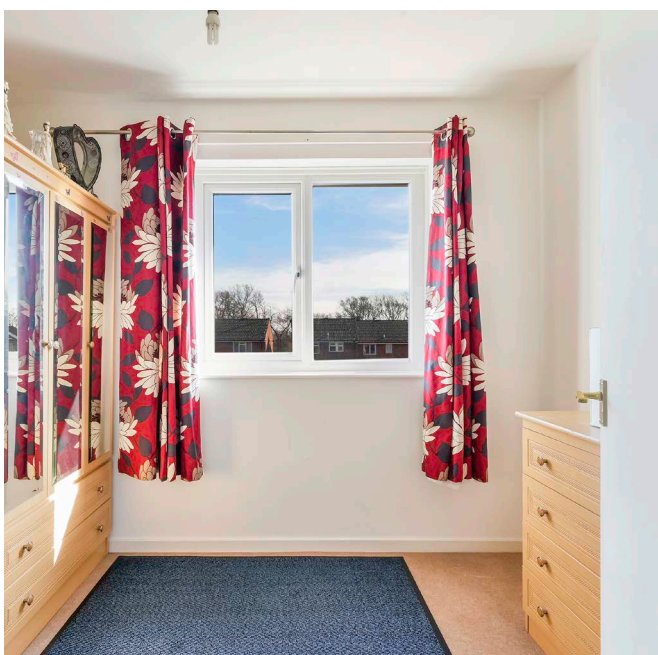
LONDON
121 Park Lane
London
W1K 7AG
0207 0791457



LOCATION AND TRAVEL

This pretty village has a small range of shops, St Johns Church, Holland Primary School and Hurst Green Infant school as well as some local pubs. Oxted town centre is approximately 2 miles away with a more comprehensive range of shops including a Waitrose and Morrisons, a leisure centre with pool and a cinema.

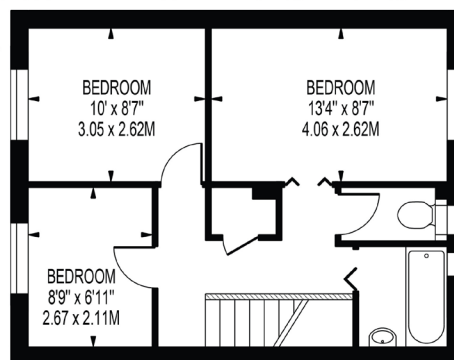
Junction 6 of the M25 is approximately 4.3 miles away providing easy access to Gatwick airport. Hurst Green mainline railway station, approximately 0.7 miles away, provides fast trains to East Croydon (from 21 minutes), London Bridge (from 37 minutes) and London Victoria (from 45 minutes).



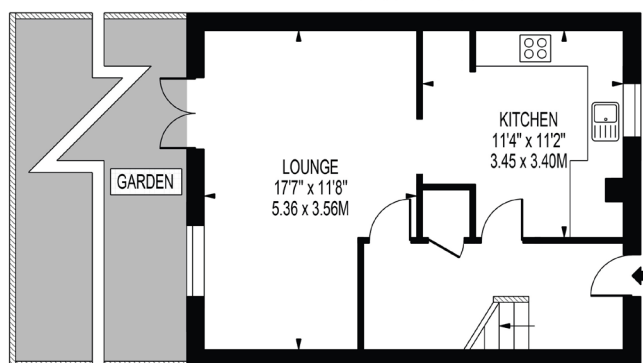


THE GREENWAY

APPROXIMATE GROSS INTERNAL FLOOR AREA: 812 SQ FT - 75.42 SQ M



FIRST FLOOR



GROUND FLOOR

FOR ILLUSTRATION PURPOSES ONLY



THIS FLOOR PLAN SHOULD BE USED AS A GENERAL OUTLINE FOR GUIDANCE ONLY AND DOES NOT CONSTITUTE IN WHOLE OR IN PART AN OFFER OR CONTRACT.
 ANY INTENDING PURCHASER OR LESSEE SHOULD SATISFY THEMSELVES BY INSPECTION, SEARCHES, ENQUIRIES AND FULL SURVEY AS TO THE CORRECTNESS OF EACH STATEMENT.
 ANY AREAS, MEASUREMENTS OR DISTANCES QUOTED ARE APPROXIMATE AND SHOULD NOT BE USED TO VALUATE A PROPERTY OR BE THE BASIS OF ANY SALE OR LET.

DISCLAIMER. PROPERTY MISDESCRIPTIONS. Whilst every attempt has been made to ensure accuracy of the property details, no responsibility is taken for error, omission or mis-statement. The Agent has not yet tested any apparatus, equipment, fixtures and fittings or services and so cannot verify that they are in working order or fit for the purpose. A buyer is advised to obtain verification from their Solicitor or Surveyor. References to the Tenure of a property are based on information supplied by the Seller. The agent has not had sight of the title documents.