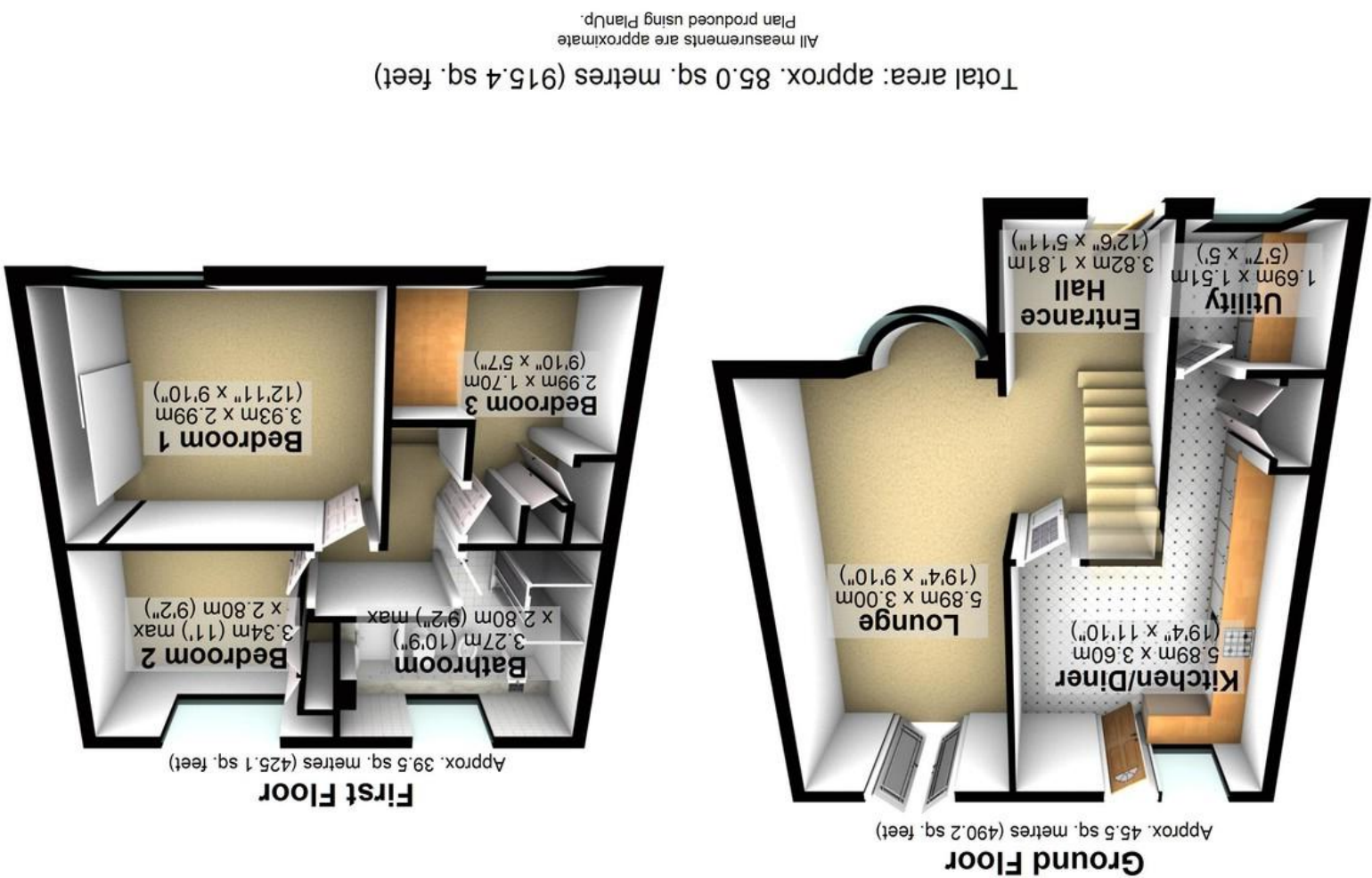
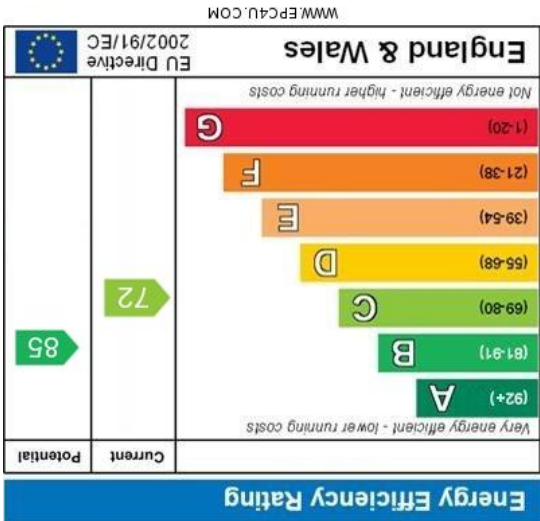
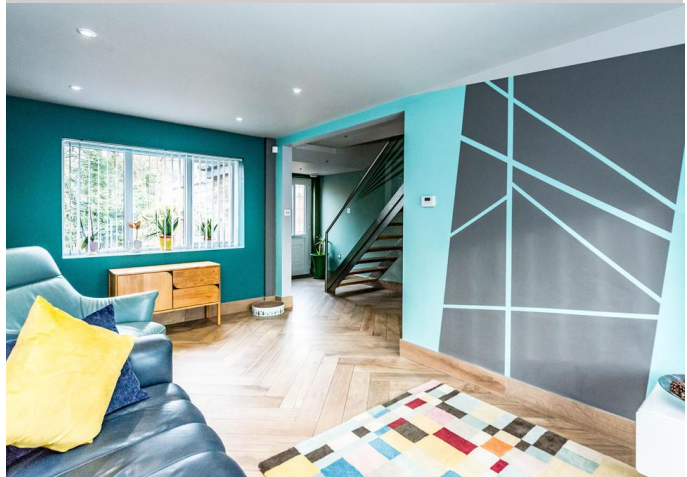
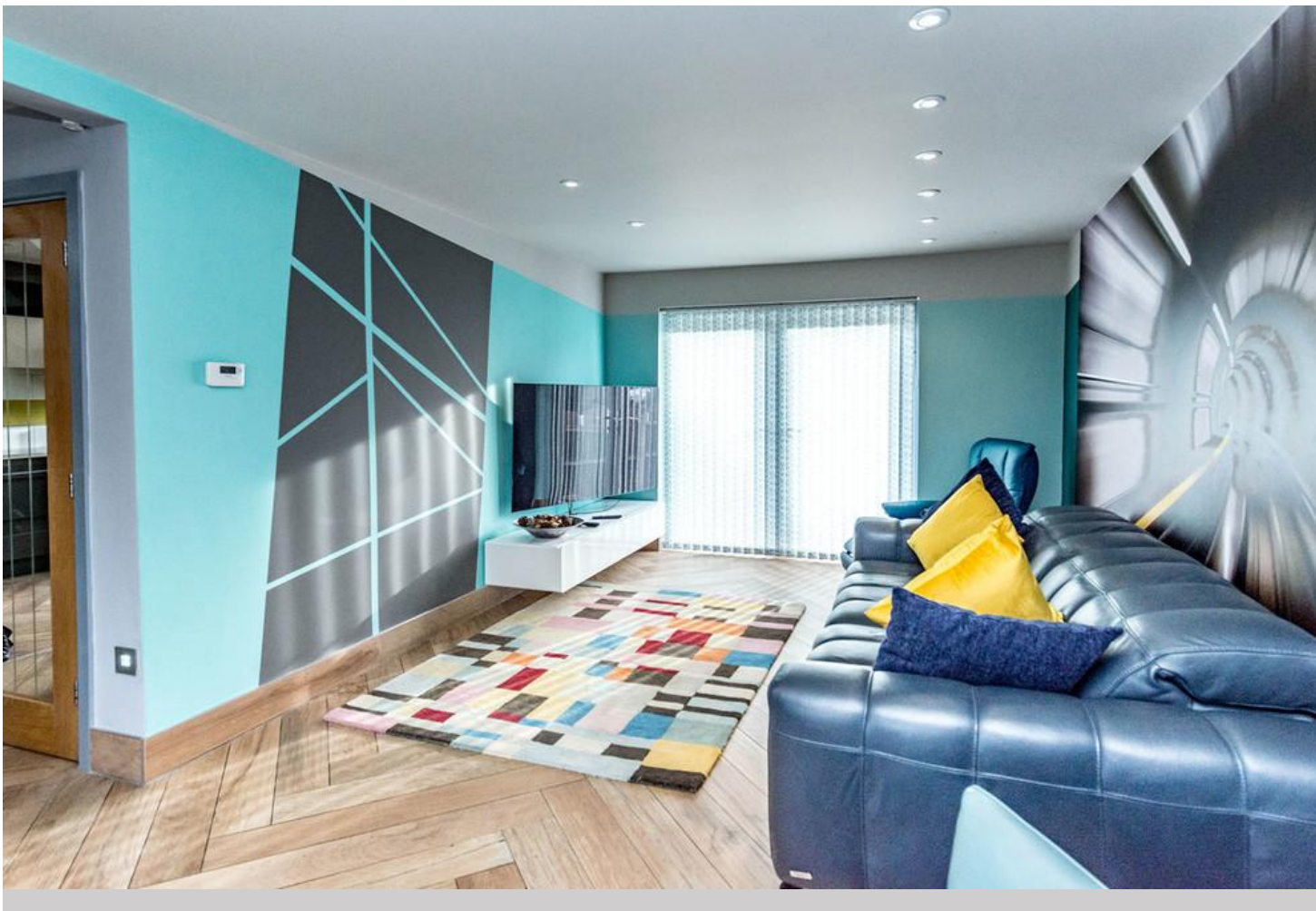


Agents Note: Whilst every care has been taken to prepare these particulars, they are for guidance purposes only. All measurements are approximate and whilst every care has been taken to ensure their accuracy, they should not be relied upon and potential buyers/tenants are advised to recheck the measurements.





31 Bankwood Road | Gleadless | Sheffield | S14 1LT

Property Tenure: Freehold

Redefining the term contemporary modern living is this truly exceptional three bedroomed, end of terraced property. Extended to the front and side by the current vendors and finished internally to an exceptionally high standard with absolutely no expense spared to create this breathtaking finish that oozes light and a feeling of space. Number 31 simply must be viewed internally to fully appreciate the style that this fabulous and in many ways unique property offers. Quietly tucked away on this no through road in the heart of this established residential suburb of Gleadless within easy reach of numerous local amenities, central Sheffield is also close. With beautiful accommodation arranged over two super spacious floors, easy on road parking to the front, private rear garden and fabulous views to the front, this property will be super popular with the professional couple and young family alike.



PROPERTY FEATURES

- THREE BEDROOMED END OF TERRACED
- INCREDIBLE FINISH THROUGHOUT THAT NEEDS TO BE VIEWED
- CONTEMPORARY OPEN PLAN FEEL
- FULLY FITTED OPEN PLAN REAR KITCHEN
- TOP QUALITY INTEGRATED APPLIANCES
- UNIQUE INTERNAL LAYOUT THAT MUST BE VIEWED
- TASTEFULLY EXTENDED TO THE FRONT AND SIDE
- PERFECT FOR THE PROFESSIONAL COUPLE OR YOUNG FAMILY
- STUNNING VIEWS TO THE FRONT AND PRIVATE REAR GARDEN
- FREEHOLD COUNCIL TAX BAND A £1,369.21

GUIDE PRICE £170,000-£180,000

