

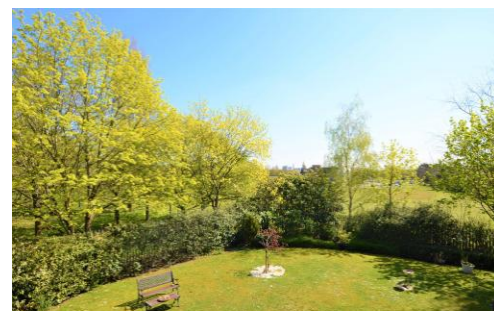


## Bishops Court

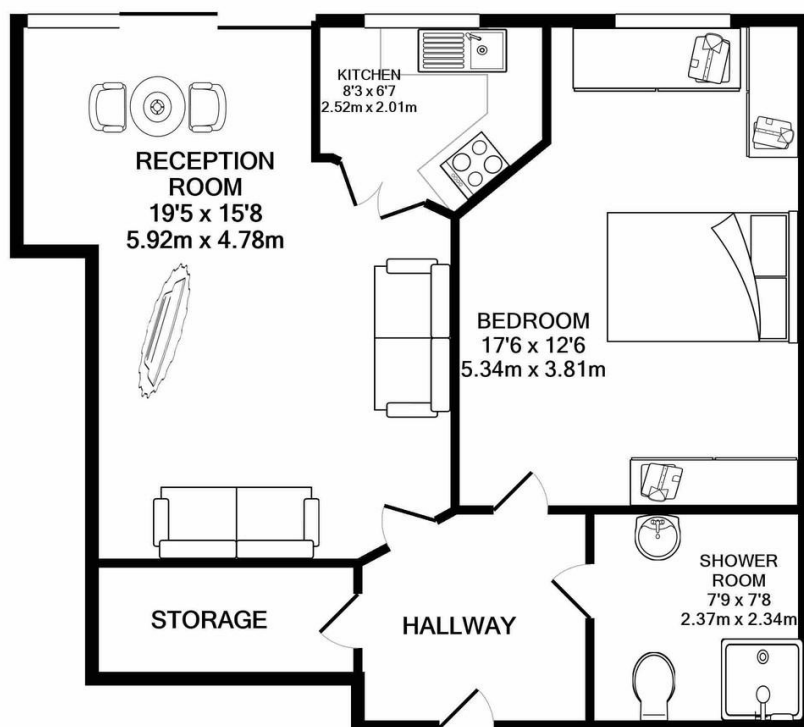
Watford Road, Wembley, , HA0 3FE

Guide Price £162,500

# Property Summary



%epcGraph\_c\_1\_245%



TOTAL APPROX. FLOOR AREA 650 SQ.FT. (60.4 SQ.M.)

Whilst every attempt has been made to ensure the accuracy of the floor plan contained here, measurements of doors, windows, rooms and any other items are approximate and no responsibility is taken for any error, omission or mis-statement. This plan is for illustrative purposes only and should be used as such by any

- Retirement building with lift and 24 hour emergency call
- Access to beautiful communal gardens
- Well equipped kitchen
- Spacious reception room with ample space to dine
- Large double bedroom (garden facing)
- Wet room with a newly placed shower
- Minimum Age 60

38 Court Parade  
Wembley  
Middlesex  
HA0 3HS

www.propertyhubltd.com  
sales@propertyhubltd.com  
0208 459 3333

Agents Note: Whilst every care has been taken to prepare these particulars, they are for guidance purposes only. All measurements are approximate and for general guidance purposes only and whilst every care has been taken to ensure their accuracy, they should not be relied upon and potential buyers/tenants are advised to recheck the measurements