



Oakfield Avenue

Kenton, Middx, HA3 8TJ

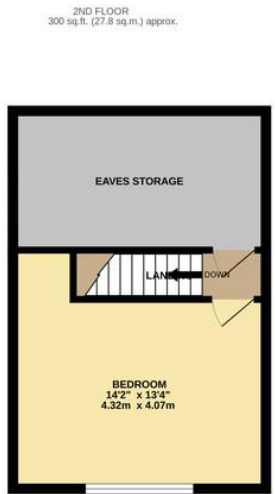
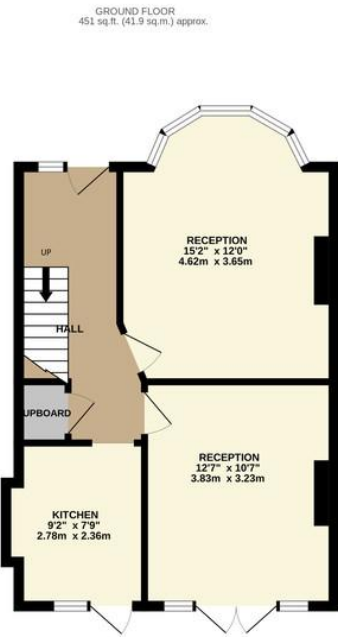
£675,000

A CHAIN FREE, four-bedroom, semi-detached house with good size rooms, two reception rooms, off-street parking to front and approx. 85' east facing rear garden. Located close to Priestmead School, Kenton Library and bus routes to Harrow, Kenton, and Queensbury.

EPC Rating: D

Council Tax Band: E





TOTAL FLOOR AREA : 1199 sq.ft. (111.4 sq.m.) approx.

Whilst every attempt has been made to ensure the accuracy of the floorplan contained here, measurements of doors, windows, rooms and any other items are approximate and no responsibility is taken for any error, omission or mis-statement. This plan is for illustrative purposes only and should be used as such by any prospective purchaser. The services, systems and appliances shown have not been tested and no guarantee as to their operability or efficiency can be given.
Made with Metropix ©2023



Score	Energy rating	Current	Potential
92+	A		
81-91	B		88 B
69-80	C		
55-68	D	58 D	
39-54	E		
21-38	F		
1-20	G		

Belmont Circle Office
506 Kenton Lane
Harrow
Middlesex
HA3 8RD

www.blacklersestateagents.co.uk
0208 907 7701
sales@blacklersstates.co.uk

Agents Note: Whilst every care has been taken to prepare these particulars, they are for guidance purposes only. All measurements are approximate and for general guidance purposes only and whilst every care has been taken to ensure their accuracy, they should not be relied upon and potential buyers/tenants are advised to recheck the measurements