

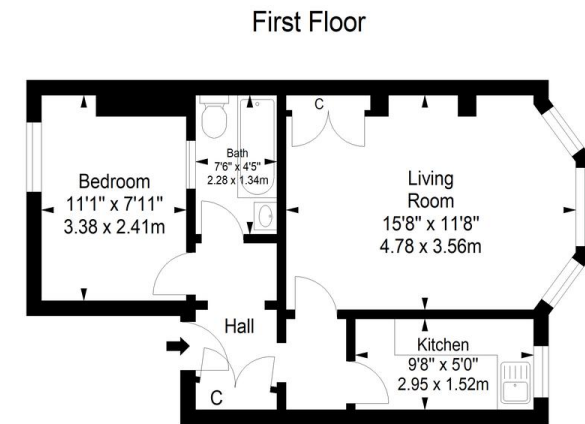


- FIRST FLOOR FLAT
- REFITTED KITCHEN AND BATHROOM
- APPROX 154 YEAR LEASE
- POPULAR CENTRAL WORTHING LOCATION

## Alexandra Road, Worthing, BN11 2DX

Guide Price £200,000

W Welch Estate Agents are delighted to offer to the market this beautifully presented 1st Floor Flat ideally situated in central Worthing. A stones throw away from the seafront and town centre, and with shops and restaurants on the doorstep as well as amenities including parks, bus routes and the mainline station close by, this property is an ideal new home. As you walk in, the property boasts its Victorian style features through the communal entrance, hallway, and airy living room with large bay windows. With a smart and modern fitted kitchen, double bedroom and stylish bathroom, the property also benefits from gas central heating & double glazing. Viewing is highly recommended to avoid disappointment.



Approximate gross internal floor area 39.5 sq m/ 425.2 sq ft  
Whilst every care has been taken to ensure accuracy, dimensions are approximate and for illustrative purposes only.  
All rights reserved.



3 Marston Road, Worthing, West  
Sussex, BN14 8BD

[www.w-welchestateagents.co.uk](http://www.w-welchestateagents.co.uk)  
01903 898000  
[sales@w-welchestateagents.co.uk](mailto:sales@w-welchestateagents.co.uk)

Agents Note: Whilst every care has been taken to prepare these particulars, they are for guidance purposes only. All measurements are approximate and for general guidance purposes only and whilst every care has been taken to ensure their accuracy, they should not be relied upon and potential buyers/tenants are advised to recheck the measurements