



## Chapel Wood, £150,000

- Add your own stamp
- Three Bedrooms
- Enclosed rear garden
- Popular location
- Close to local shops and schools
- EPC Rating: D



 3  2  1





## About the property

Add your own stamp Be the first in to view this three bedroom property in Chapel Wood, the property briefly comprises of a large kitchen dining area, lounge, cloak room to the ground floor, to the first floor are three bedrooms and bathroom. An internal viewing is highly advised perfect for both first time buyers and investors





## Accommodation

### Entrance

Enter into porch of property with access to hallway comprising of doors leading to cloakroom, lounge and kitchen, stairs to first floor landing and under stairs cupboard

### Living Room

16' 9" x 13' 3" ( 5.11m x 4.04m )  
With Carpeted flooring, radiator, two Upvc double glazed windows to rear aspect and door leading to kitchen

### Kitchen

13' 3" x 11' ( 4.04m x 3.35m )  
With a range of wall and base units, work top space, radiator, space for fridge freezer and space and plumbing for washing machine and dryer, Upvc double glazed window to rear and Upvc double glazed door to rear garden

### Cloakroom

With Wc, wash hand basin and Upvc double glazed window to front aspect

### Bedroom One

9' 8" x 13' 4" ( 2.95m x 4.06m )  
With carpeted flooring, radiator and built in wardrobe space, Upvc double glazed window to rear aspect

### Bedroom Two

8' 9" x 10' 5" ( 2.67m x 3.17m )  
Upvc window to rear, carpeted flooring, radiator and built in wardrobe space

### Bedroom Three

9' 1" x 13' 3" ( 2.77m x 4.04m )  
With carpeted flooring, radiator, Upvc Double glazed window and built in wardrobe space

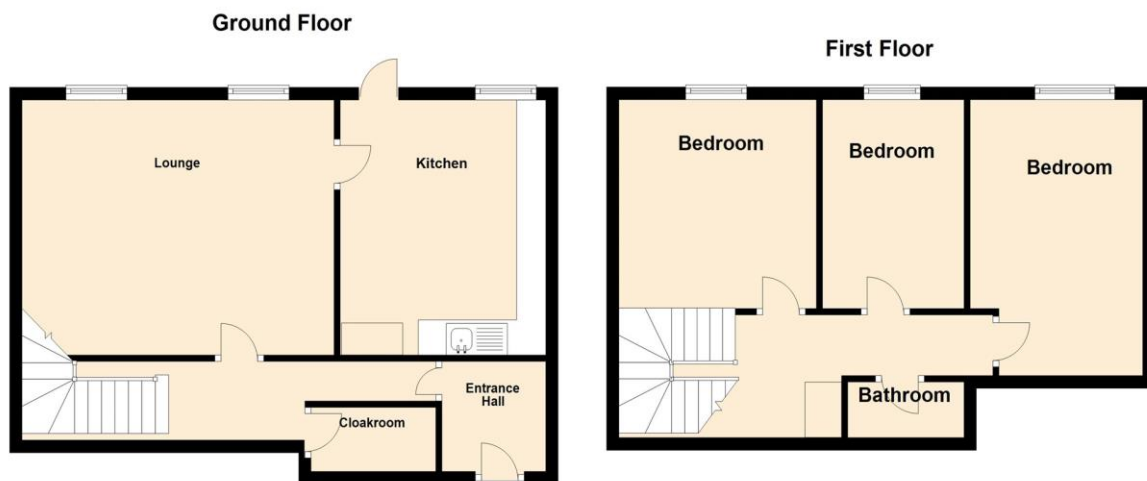
### Bathroom

Wc, bath and Upvc double glazed window to front aspect

02920 462246

albanyroad@peteralan.co.uk

## Floorplan



## Important Information

Note while we endeavour to make our sales details accurate and reliable, if there is any point which is of particular interest to you, please contact the office and we will be pleased to confirm the position for you. We have not personally tested any apparatus, equipment, fixtures, fittings or services and cannot verify they are in working order or fit for their purposes. Nothing in these particulars is intended to indicate that carpets or curtains, furnishings or fittings, electrical goods (whether wired or not). Gas fires or light fittings or any other fixtures not expressly included form part of the property offered for sale. This computer generated Floorplan, if applicable, is intended as a general guide to the layout and design of the property. It is not to scale and should not be relied upon for dimensions. Tenure: We cannot confirm the tenure of the property as we have not had access to the legal documents. The buyer is advised to obtain verification from their solicitor or surveyor.

Peter Alan Limited is registered in England and Wales under company number 2073153, Registered Office is Cumbria House, 16-20 Hockliffe Street, Leighton Buzzard, Bedfordshire, LU7 1GN. VAT Registration Number is 500 2481 05. For activities relating to regulated mortgages and non-investment insurance contracts, Peter Alan Limited is an appointed representative of Connells Limited which is authorised and regulated by the Financial Conduct Authority. Connells Limited's Financial Services Register number is 302221. Most buy-to-let