

53 Trafalgar Road

Portslade BN41 1GT

Asking Price Of £425,000

- SEMI-DETACHED FAMILY HOME
- THREE BEDROOMS
- GOOD SIZE LIVING ROOM
- SEPARATE DINING AREA AND KITCHEN
- OFF ROAD PARKING AND GARAGE
- GOOD SIZE REAR GARDEN
- WELL PROPORTIONED ROOM SIZES
- NO ONWARD CHAIN

Whitlock & Heaps are delighted to present to market this good size three bedroom semi-detached family home offering good size living accommodation, separate dining area and double bedrooms. This family home boasts a maintainable sized rear garden with side access, off road parking and a garage. Brought to market with no onward chain.

The Portslade seafront is at the bottom of the road, as well as Boundary Road with its abundance of shopping facilities, eateries and cafés. Portslade mainline station is also close by, making commutes out of the city simple. Bus routes operate locally, making public transport into the city centre easy. West Hove Sainsbury's is a short drive away, benefitting from a petrol station. The A27 slip road is also easily accessible

ENTRANCE PORCH Good size and leading to entrance door.

KITCHEN Incorporating stainless steel sink unit with mixer tap and drainer, vinyl work surfaces with cupboards under and matching eye-level cupboards, part tiled, space for fridge and cooker, extractor fan above, radiator, UPVC double glazed window overlooking garden.

LIVING ROOM Radiator, thermostat, door to kitchen and dining area, understairs cupboard.

DINING ROOM Radiator, UPVC double glazed door to garden.

FIRST FLOOR

LANDING Doors to all rooms, smoke alarm, double glazed window on stairs.

BEDROOM 1 UPVC double glazed windows overlooking garden, radiator.

BEDROOM 2 UPVC double glazed windows overlooking front, radiator.

BEDROOM 3 UPVC double glazed window overlooking front, radiator, cupboard housing water tank.

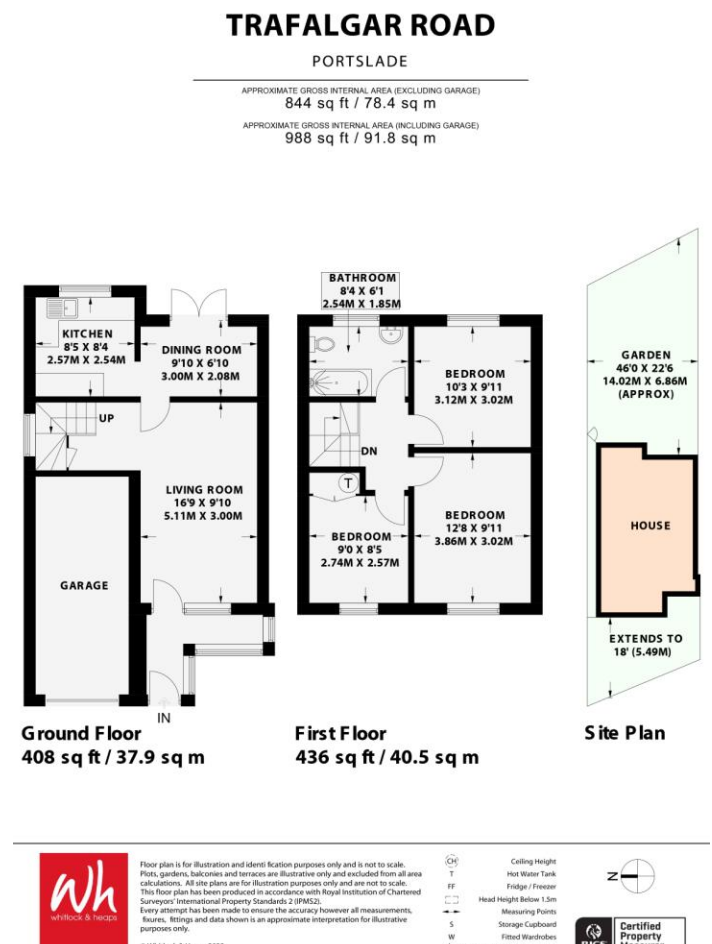
BATHROOM Comprising white bathroom suite with electric shower over being fully tiled, pedestal wash-hand basin, frosted UPVC double glazed window overlooking garden, radiator, extractor fan, hatch to loft, shaving point.

OUTSIDE

REAR GARDEN Paved walk ways with centre being grassed, fully enclosed with stand alone shed, mature border, side access, outdoor light and tap.

FRONT GARDEN Off road parking, door to garage, side access to garden.

GARAGE Brick built, housing 'Glow-worm' conventional gas-fired boiler, electrics, gas meter, light above.



Portslade Branch

48 Boundary Road, Portslade BN3 4EF
portslade@whitlockandheaps.co.uk
01273 422706

Hove Branch

65 Sackville Road, Hove BN3 3WE
hove@whitlockandheaps.co.uk
01273 778577



Disclaimer: Whitlock & Heaps have produced these particulars in good faith and they are set out as a general guide. Accuracy is not guaranteed, nor do they form part of any contract. If there is any particular aspect of these details which you require any confirmation, please do contact us, especially if contemplating a long journey. All measurements are approximate. Fixtures and fittings, other than those mentioned above, to be agreed with the seller. Any services, systems or appliances at the property have not been tested.