

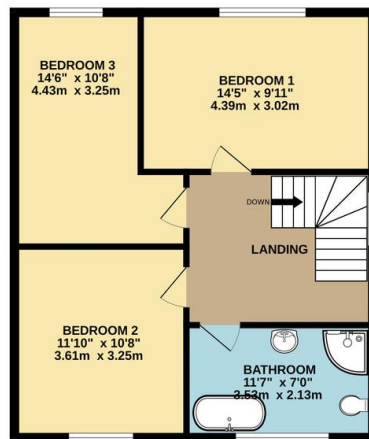
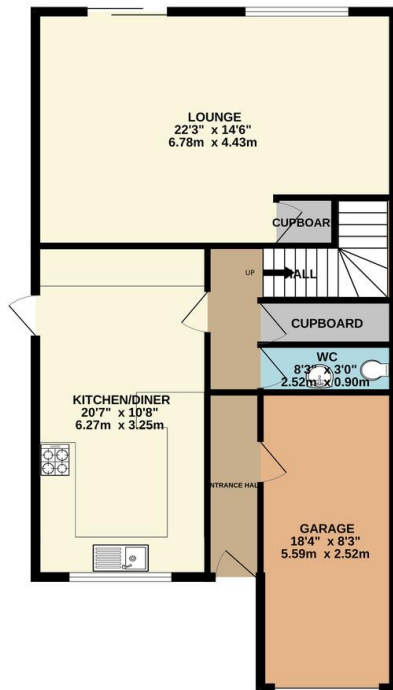
Property Summary

This well presented and extended three bedroom detached family home is pleasantly situated on the Little Hill Estate of Wigston. The accommodation comprises of main entrance hall, further hallway, lounge, kitchen diner, ground floor WC, landing to three bedrooms and four piece bathroom suite, front and rear landscaped gardens, garage and ample car standing space. Internal inspection comes highly recommended.



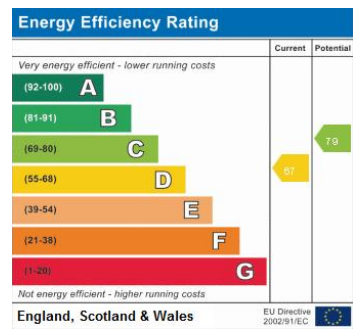
GROUND FLOOR
837 sq.ft. (77.8 sq.m.) approx.

1ST FLOOR
586 sq.ft. (54.5 sq.m.) approx.



TOTAL FLOOR AREA : 1424 sq.ft. (132.3 sq.m.) approx.

Whilst every attempt has been made to ensure the accuracy of the floorplan contained herein, measurements of doors, windows, rooms and any other items are approximate and no responsibility is taken for any error, omission or mis-statement. This plan is for illustrative purposes only and should be used as such by any prospective purchaser. The services, systems and appliances shown have not been tested and no guarantee as to their operability or efficiency can be given.
Made with Metropix ©2023



- Detached Family Home
- Extended
- Three Bedrooms
- Well Presented Throughout
- Little Hill Estate, Wigston
- Highly Popular Location
- Garage
- Off Road Parking

phillips george | sales & lettings

Agents Note: Whilst every care has been taken to prepare these sales particulars, they are for guidance purposes only. All measurements are approximate and for general guidance purposes only and whilst every care has been taken to ensure their accuracy, they should not be relied upon and potential buyers are advised to recheck the measurements

🏠 46 Long Street, Wigston, Leicestershire, LE18 2AH

✉ info@phillipsgeorge.co.uk
☎ 0116 216 8178

