



3 West Green Cottages

Winterborne Kingston, Dorset, DT11 9AT



Situated in this idyllic location on the edge of the village of Winterbourne Kingston is this delightful, four bedroom, three reception room family home. Enjoying views over neighbouring countryside, the property is situated in grounds of approximately three acres which includes formal garden and paddocks. The property is approached over a private driveway accessing just three homes and to the front of the cottage there is parking for numerous vehicles leading to a substantial double garage. The house itself has been very well presented and maintained and has a cosy feel with log burners to two of the main reception rooms, and a country style fitted kitchen and utility room. To the first floor there are four double bedrooms, an en-suite shower room, family shower room and a generous landing with study area enjoying an outlook over the neighbouring fields.

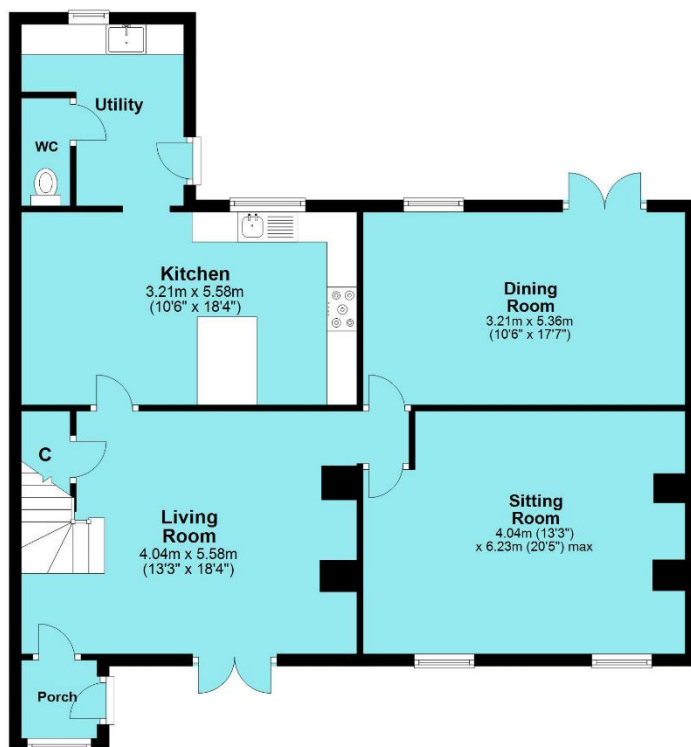
Key Features

- ❖ Set in three acres
- ❖ Overlooking fields
- ❖ Four double bedrooms
- ❖ Three reception rooms
- ❖ Country style kitchen and utility
- ❖ Central heating and two log burners
- ❖ Character features
- ❖ Garden and four paddocks with field shelter
- ❖ Cabin, kitchen garden and greenhouse
- ❖ Substantial double garage



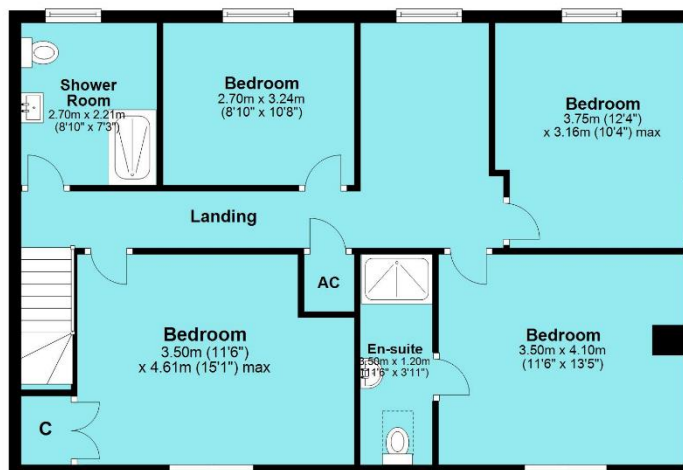
Ground Floor

Approx. 93.1 sq. metres (1001.8 sq. feet)



First Floor

Approx. 81.2 sq. metres (873.7 sq. feet)



Total area: approx. 174.2 sq. metres (1875.5 sq. feet)

Whilst every attempt has been made to ensure the accuracy of the floor plan, measurements of doors, windows, rooms and any other items are approximate and no responsibility is taken for error omission or misstatement. This plan is for illustrative purposes only and should be used as such by any prospective purchaser. The services systems and appliances shown have not been tested and no guarantee as to their operability or efficiency can be given. Plan produced using PlanUp.

W817 Ravensworth 01670 713330

Poolle Office

Towngate House
2-8 Parkstone Road
Poolle BH15 2PW
Tel: 01202 660900
poolle@wilsonthomas.co.uk

Lower Parkstone Office

5 Bournemouth Road
Lower Parkstone
Poolle, Dorset BH14 0EF
Tel: 01202 717771
lowerparkstone@wilsonthomas.co.uk

Broadstone Office

219 Lower Blandford Road
Broadstone, Poolle
Dorset BH18 8DN
Tel: 01202 691122
broadstone@wilsonthomas.co.uk



www.wilsonthomas.co.uk

All rooms have been measured with an electronic laser and are approximate measurements only. To comply with the Consumer Protection from Unfair Trading Regulations 2008, we clarify that none of the services to the above property have been tested by ourselves, and we cannot guarantee that the installations described in the details are in perfect working order. Wilson Thomas for themselves, and for the vendors or lessors, produce these brochures in good faith, and are a guideline only. They do not constitute any part of a contract and are correct to the best of our knowledge at the time of going to press.