

19b Vicarage Grove | London | SE5
7LW

Freehold

£425,000

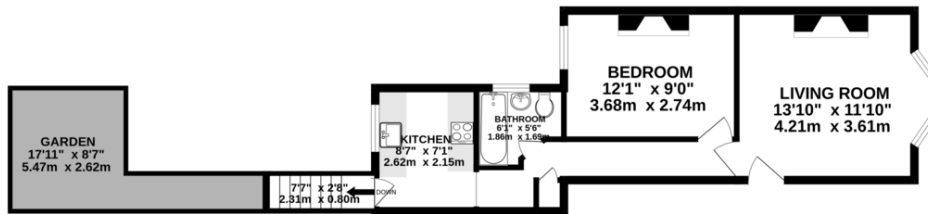
- Garden flat
- Victorian
- Green spaces
- Local amenities
- Camberwell
- Church street
- Brunswick park
- Period features
- Fireplace
- High ceilings



Very well presented one bed garden flat, on an attractive wide residential street, moments from Brunswick park & the bustling amenities of Camberwell. An impressive Victorian conversion, contemporary finish throughout, bright & airy reception room with period features. An ideal first time buyers purchase.



Energy Efficiency Rating		
	Current	Potential
Very energy efficient - lower running costs		
(92+) A		
(81-91) B		
(69-80) C		77
(55-68) D	66	
(39-54) E		
(21-38) F		
(1-20) G		
Not energy efficient - higher running costs		



TOTAL FLOOR AREA: 420sq.ft. (39.0 sq.m.) approx.

Whilst every attempt has been made to ensure the accuracy of the floorplan contained here, measurements of doors, windows, rooms and any other items are approximate and no responsibility is taken for any error, omission or mis-statement. This plan is for illustrative purposes only and should be used as such by any prospective purchaser. The services, systems and appliances shown have not been tested and no guarantee as to their operability or efficiency can be given.
Made with Metrepx 12/2024

Viewing Arrangements

Strictly by appointment

Contact Details

121 Denmark Hill

London

SE5 8EN

www.urbanvillagehomes.co.uk

sales@urbanvillagehomes.com

020 3519 9121

Agents Note: Whilst every care has been taken to prepare these sales particulars, they are for guidance purposes only. All measurements are approximate and are for general guidance purposes only and whilst every care has been taken to ensure their accuracy, they should not be relied upon and potential buyers are advised to recheck the measurements