



HINTON & DOWNES
residential

SALES, LETTINGS & MANAGEMENT

Stox Mead

Harrow Weald HA3 5JX

- Three bedroom terraced house with off street parking
- Highly sought after cul-de-sac location
- Offered for sale in fair order throughout

Asking Price Of £490,000

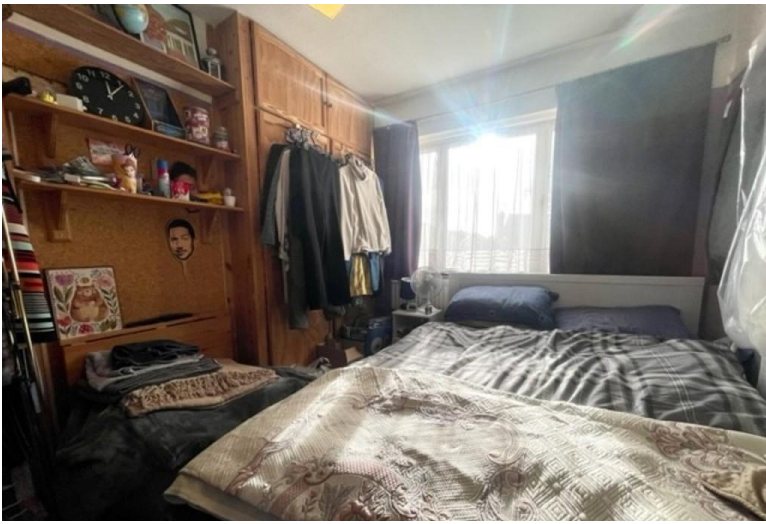
EPC Rating '60'



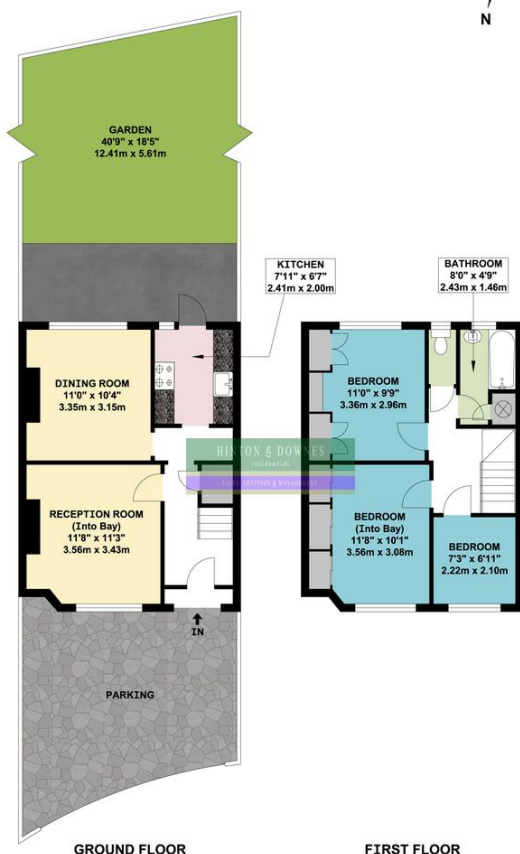


Property Description

Guide Price £500,000 to £525,000. A THREE BEDROOM TERRACED HOUSE WITH OFF STREET PARKING in need of some updating, located in a sought after cul-de-sac within moments of facilities in the surrounding area. The property benefits from two reception rooms and a kitchen to the ground floor with three bedrooms, bathroom and separate WC to the first floor. The property is very clean and tidy and benefits from gas fired central heating, double glazed windows (where specified). An internal inspection comes highly advised.



STOX MEAD
HARROW WEALD HA3



APPROX. GROSS INTERNAL FLOOR AREA 786.19 SQ. FT / 73.04 SQ. M

WHILST EVERY ATTEMPT HAS BEEN MADE TO ENSURE THE ACCURACY OF THE FLOOR PLAN CONTAINED HERE, MEASUREMENTS OF DOORS, WINDOWS, ROOMS AND ANY OTHER ITEMS ARE APPROXIMATE AND NO RESPONSIBILITY IS TAKEN FOR ANY ERROR, OMISSION, OR MIS-STATEMENT. THIS PLAN IS FOR ILLUSTRATIVE PURPOSES ONLY AND SHOULD BE USED AS SUCH BY ANY PROSPECTIVE PURCHASER. FLOOR PLANS ARE NOT DONE TO "SCALE".

Energy Efficiency Rating

	Current	Potential
Very energy efficient - lower running costs		
(92-100) A		
(81-91) B		87
(69-80) C		
(55-68) D	66	
(39-54) E		
(21-38) F		
(1-20) G		
Not energy efficient - higher running costs		
England, Scotland & Wales		EU Directive 2002/91/EC

399 High Road
Harrow
Middlesex
HA3 6EL

www.hintonanddownes.co.uk
sales@hintonanddownes.com
0208 861 1066

Agents Note: Whilst every care has been taken to prepare these sales particulars, they are for guidance purposes only. All measurements are approximate and for general guidance purposes only and whilst every care has been taken to ensure their accuracy, they should not be relied upon and potential buyers are advised to recheck the measurements.