



HINTON
residential

SALES, LETTINGS & MANAGEMENT

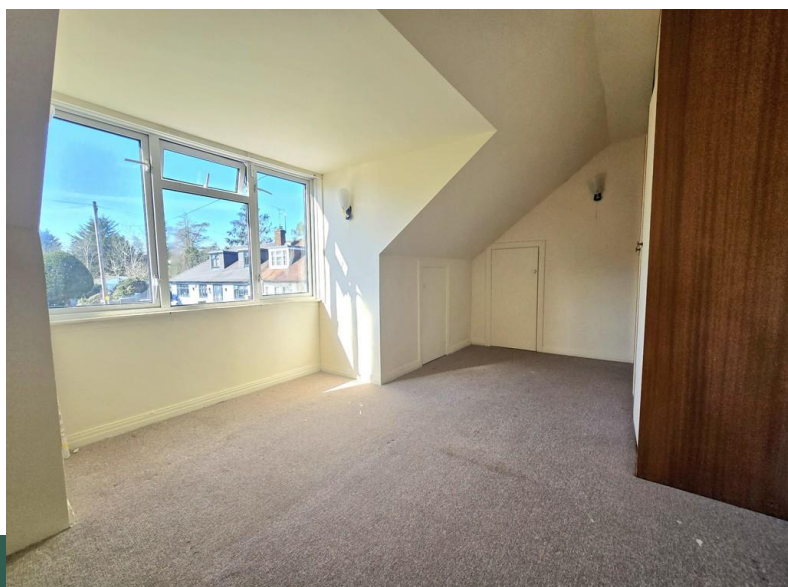
Chestnut Drive

Harrow Weald, HA3 7DJ

- Three bedroom
- Semi detached bungalow
- Guest W.C.
- Modern kitchen

£650,000

EPC Rating '55'



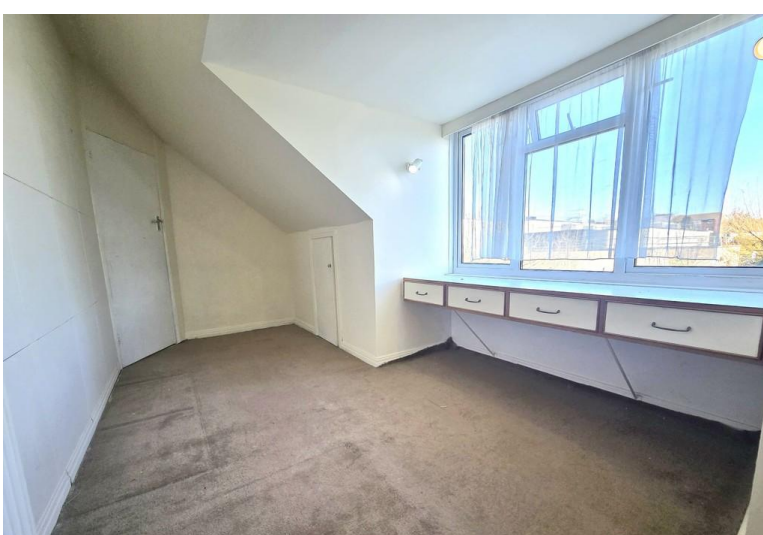


Property Description

A well presented THREE BEDROOM SEMI DETACHED BUNGALOW with huge potential for extension (STPP) and off street parking for two cars located on this popular cul-de-sac within easy reach of schools, amenities and transport links. Offered to the market CHAIN FREE.

This lovely home comprises a spacious through lounge with the original parquet flooring and fireplace, a modern shaker style fitted kitchen with appliances (including dishwasher, washing machine, 5 ring gas burner, oven), a double bedroom with fitted storage on the ground floor, a guest W.C and a large family bathroom tiled floor to ceiling with bath and separate shower cubicle.

On the first floor there is a good sized second double bedroom with fitted wardrobes and a walk in storage cupboard in the eaves, a third bedroom which could be used as a good sized single bedroom or small double with a fitted dressing area and a separate storage unit off of the landing.





Schools within 1 mile

Bentley Wood - Ofsted 'Outstanding'
 Sacred Heart Language College - Ofsted 'Outstanding'
 Kingsley High School - Ofsted 'Outstanding'
 Weald Rise Primary school - Ofsted 'Good'
 Helix Education Centre - Ofsted 'Good'
 Belmont School - Ofsted 'Good'
 Hujjat Primary School - Ofsted 'Good'
 Whitefriars School - Ofsted 'Good'
 St Josephs School - Ofsted 'Good'
 Cedars Manor - Ofsted 'Good'

Local Transport

Harrow and Wealdstone Station - Bakerloo Line and
 Overground including fast trains to Euston - 1 mile
 Headstone Lane Station - Overground

H19 Bus Route to Harrow
 140 (N140) Bus Route to Hayes
 182 Bus Route to Brent Cross
 258 Bus Route to Watford/South Harrow
 340 Bus Route to Edgware/Harrow
 H12 Bus Route to Stanmore/South Harrow
 N18 Bus Route to Trafalgar Square

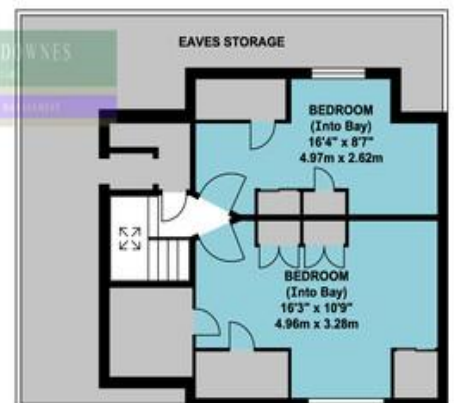


1. MONEY LAUNDERING REGULATIONS - Intending purchasers will be asked to produce identification documentation at a later stage and we would ask for your co-operation in order that there will be no delay in agreeing the sale.
- 2: These particulars do not constitute part or all of an offer or contract.
- 3: The measurements indicated are supplied for guidance only and as such must be considered incorrect.
- 4: Potential buyers are advised to recheck the measurements before committing to any expense.
- 5: Hinton Residential has not tested any apparatus, equipment, fixtures, fittings or services and it is the buyers interests to check the working condition of any appliances.
- 6: Hinton Residential has not sought to verify the legal title of the property and the buyers must obtain verification from their solicitor.

CHESTNUT DRIVE HARROW WEALD HA3



GROUND FLOOR



FIRST FLOOR

APPROX. GROSS INTERNAL FLOOR AREA 1076.39 SQ. FT / 100.00 SQ. M

WHILST EVERY ATTEMPT HAS BEEN MADE TO ENSURE THE ACCURACY OF THE FLOOR PLAN CONTAINED HERE, MEASUREMENTS OF DOORS, WINDOWS, ROOMS AND ANY OTHER ITEMS ARE APPROXIMATE AND NO RESPONSIBILITY IS TAKEN FOR ANY ERROR, OMISSION, OR MIS-STATEMENT. THIS PLAN IS FOR ILLUSTRATIVE PURPOSES ONLY AND SHOULD BE USED AS SUCH, BY ANY PROSPECTIVE PURCHASER.
FLOOR PLANS ARE NOT DONE TO "SCALE".

399 High Road
Harrow
Middlesex
HA3 6EL

www.hintonresidential.com
sales@hintonanddownes.com
0208 861 1066

Agents Note: Whilst every care has been taken to prepare these sales particulars, they are for guidance purposes only. All measurements are approximate are for general guidance purposes only and whilst every care has been taken to ensure their accuracy, they should not be relied upon and potential buyers are advised to recheck the measurements