



Andrew Pearce
PINNER

TUDOR CLOSE, PINNER, MIDDLESEX HA5 2JT



This beautifully updated, three-bedroom, two-bathroom home is perfect for young families looking for a stress-free move. With extensive redesigns and modern upgrades, this turnkey property is ready for you to simply unpack and enjoy.

From the moment you step into the welcoming entrance hallway, you'll feel at home. The open-plan kitchen and living area is the heart of the house – bright, spacious, and ideal for family life. The kitchen boasts a range of modern wall and base units with stylish contrasting worktops, plus plenty of room for a large dining table and comfy sofas, making it perfect for everyday living and entertaining. Double doors lead to a cozy front room, offering a private space to relax.

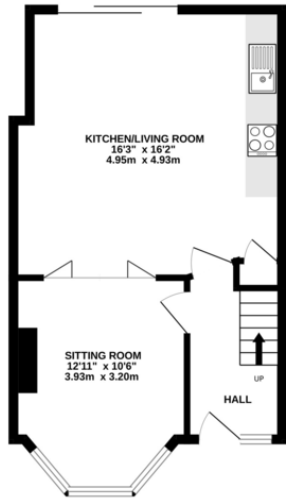
Upstairs, you'll find two generously sized double bedrooms and a family bathroom. The second floor is home to the master bedroom with its own en-suite shower room – a peaceful retreat for parents.

The large garden is perfect for outdoor fun and features a spacious patio area for family gatherings or summer barbecues. Plus, there's additional parking at the end of the garden, accessible via a rear access road. Off-street parking for one car is available at the front, with plenty of visitors' spaces too.

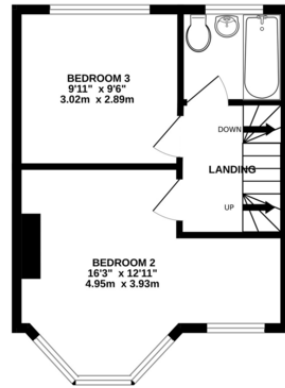
Situated in a quiet cul-de-sac just off Mount Park Road, Tudor Close offers the best of both worlds – a peaceful retreat with easy access to everything you need. Ruislip High Street, Eastcote High Street, and Pinner Village are just a short distance away, offering a variety of shops, restaurants, and excellent transport links, including the Metropolitan and Piccadilly line stations. The highly rated Haydon School is also nearby, making it a great location for families.



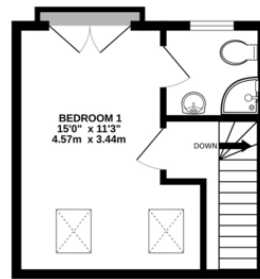
GROUND FLOOR
430 sq.ft. (40.0 sq.m.) approx.



1ST FLOOR
328 sq.ft. (30.4 sq.m.) approx.



2ND FLOOR
223 sq.ft. (20.7 sq.m.) approx.



TOTAL FLOOR AREA: 981 sq.ft. (91.1 sq.m.) approx.

Whilst every attempt has been made to ensure the accuracy of the floorplan contained here, measurements of doors, windows, rooms and any other items are approximate and no responsibility is taken for any error, omission or mis-statement. This plan is for illustrative purposes only and should be used as such by any prospective purchaser. The services, systems and appliances shown have not been tested and no guarantee as to their operability or efficiency can be given.
Made with Metropix ©2025.



