

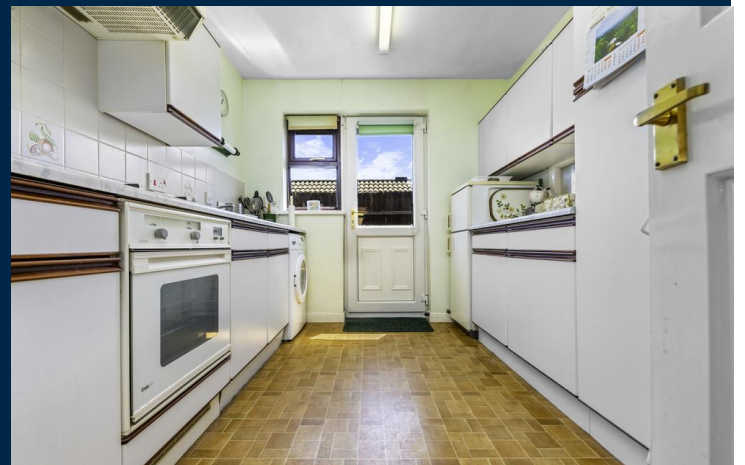
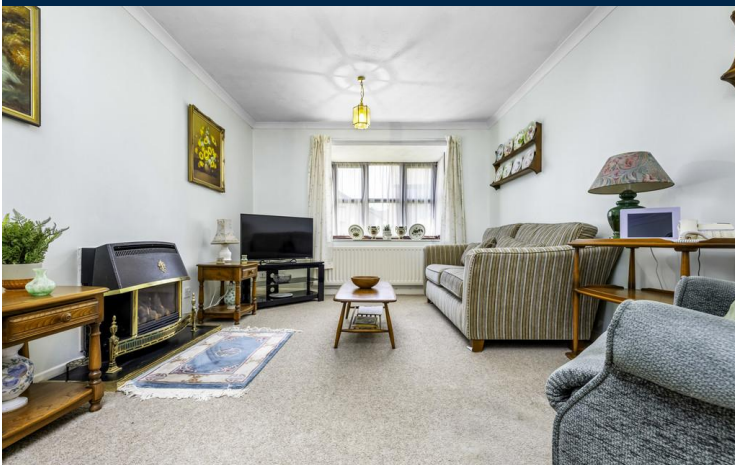


56 BUCKLEY CLOSE

CARDIFF CF5 2DG

OFFERS IN EXCESS OF

£325,000



DETACHED BUNGALOW



3



1



1



1

TENURE: FREEHOLD

COUNCIL TAX BAND: E

FLOOR AREA APPROX: 733 SQ FT

VIEWING: STRICTLY BY APPOINTMENT

**** BRIGHT AND SPACIOUS THREE BEDROOM DETACHED BUNGALOW ** NO CHAIN **** A spacious and well presented three bedroom detached bungalow in the sought after area of Danescourt, close to amenities and transport links. Entrance hallway, spacious lounge, neat fitted kitchen, versatile dining room or bedroom with two additional bedrooms, family bathroom. Gas central heating, double glazed windows. Delightful paved patio and lawned rear garden. Long driveway to front. EPC Rating: D

DESCRIPTION

**** BRIGHT AND SPACIOUS THREE BEDROOM DETACHED BUNGALOW ** NO CHAIN **** A spacious and well presented three bedroom detached bungalow in the sought after area of Danescourt, close to amenities and transport links. Entrance hallway, spacious lounge, neat fitted kitchen, versatile dining room or bedroom with two additional bedrooms, family bathroom. Gas central heating, double glazed windows. Delightful paved patio and lawned rear garden. Long driveway to front. EPC Rating: D

LOCATION

Danescourt is a popular residential suburb that is well served by its amenities. These include a shopping precinct, doctors and dentist surgeries, a child's play area, cafe/restaurant, train station and convenient bus routes with regular service to and from the City Centre, and also the River Taff for access to the Taff Trail.

ENTRANCE HALLWAY

Approached via a uPVC entrance door leading to the L shaped hallway. Access to roof space. Airing cupboard housing the 'Worcester' combi gas central heating boiler. Radiator.

LOUNGE

17' 5" x 10' 8" (5.31m x 3.27m)

An excellent sized principal reception with deep silled bay window. Additional window to side. Feature fire place. Two radiators. Serving hatch to kitchen.

BEDROOM THREE/DINING ROOM

13' 6" x 8' 11" (4.12m x 2.74m)

A versatile room currently used as a dining room but potential to be used as a double bedroom, dependant on needs. Window to front. Radiator.

KITCHEN

10' 8" x 8' 6" (3.27m x 2.60m)

With units and worktops to two sides. Inset stainless steel sink with side drainer. Inset four ring gas hob with cooker hood above and oven below. Matching range of eye level wall cupboards. Tiled splash back. Service hatch to kitchen. Space for fridge freezer. Plumbing for washing machine. Door to side path. Radiator.

BEDROOM ONE

10' 8" x 10' 0" (3.27m x 3.07m)

Overlooking the rear garden, a good sized primary double bedroom. Fitted wardrobes to one side. Radiator.

BEDROOM TWO

10' 4" x 6' 11" (3.15m x 2.13m)

Enjoying views over the rear garden. Fitted wardrobe. Radiator.

FAMILY BATHROOM

6' 5" x 5' 10" (1.98m x 1.78m)

Comprising low level wc, wash hand basin, panelled bath with shower above. Tiled splash back. Obscure glass window to side. Radiator.

OUTSIDE

REAR GARDEN

A delight rear garden comprising large paved patio leading onto an area of lawn with inset shrubs and hedgerow to rear. Timber gate giving access to side.

FRONT GARDEN

With area of lawn to front and long driveway to side.

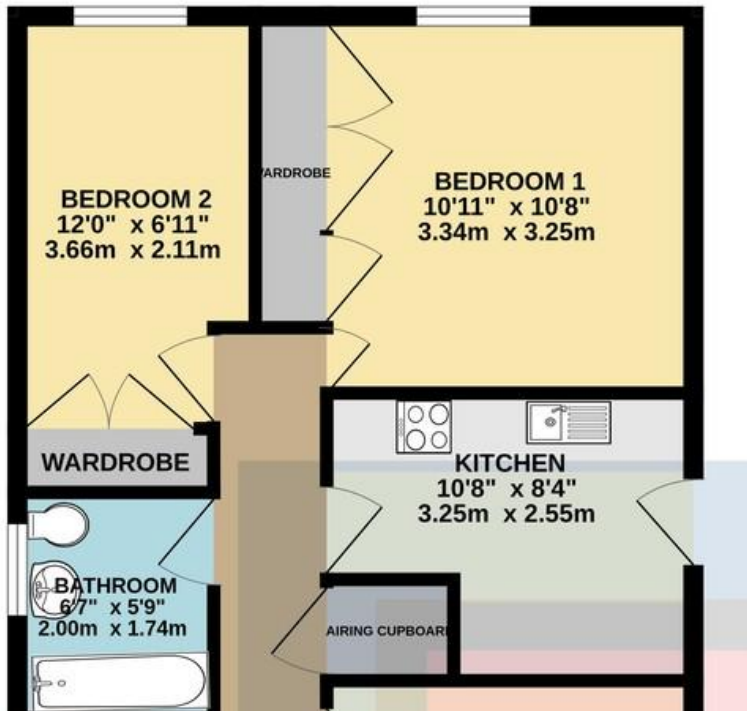


56 BUCKLEY CLOSE, , CARDIFF CF5 2DG



56 BUCKLEY CLOSE, , CARDIFF CF5 2DG

GROUND FLOOR
733 sq.ft. (68.1 sq.m.) approx.



Energy Efficiency Rating			
Score	Energy rating	Current	Potential
92+	A		
81-91	B		87 B
69-80	C		
55-68	D	66 D	
39-54	E		
21-38	F		
1-20	G		

RADYR 029 2084 2124

Radyr, 6 Station Road, Radyr, Cardiff, South Glamorgan, CF15 8AA



Important Notice: These particulars are prepared for guidance only and do not form whole or any part of any offer or contract. Whilst the particulars are given in good faith, they are not to be relied upon as being a statement or representation of fact. They are made without responsibility on the part of MGY Ltd or Vendor/lessor and the prospective purchaser/lessee should satisfy themselves by inspection or otherwise as to their accuracy. Neither MGY Ltd nor anyone in their employ, or the vendor/lessor, imply, make or give any representation/warranty whatsoever in relation to this property.

MGY.CO.UK