

The Bothy

STRATHY POINT LIGHTHOUSE, STRATHY, CAITHNESS, KW14 7RY



CHARMING COASTAL BOTHY AT
STRATHY LIGHTHOUSE



01463 211 116



www.mcewanfraserlegal.co.uk



info@mcewanfraserlegal.co.uk



Nestled in the peaceful surroundings of the north coast, this charming studio apartment boasts stunning, uninterrupted sea views, offering the perfect retreat for nature lovers. Surrounded by dramatic coastal landscapes, it's an idyllic sanctuary for walking, wildlife watching, and even catching a glimpse of the Northern Lights. Just 4 miles from the NC500, this serene location provides an ideal escape to unwind and reconnect with nature.

Despite its compact size, the studio is thoughtfully designed and fully equipped with modern amenities. The well-appointed kitchen makes meal preparation easy, ensuring a comfortable stay.

Everything within The Bothy is included in the sale, allowing for a seamless transition for the new owner. From furniture and kitchen essentials to eco-friendly linens and appliances, The Bothy is ready for immediate use or as a sought-after holiday rental. The sale includes a flat-screen smart LED TV, gas hob, electric mini oven, fridge/freezer, kettle, toaster, iron & mini ironing board, and hairdryer. The Bothy already has bookings for the 2025 season. The current owner is happy to discuss the bookings in further detail with any prospective buyer.

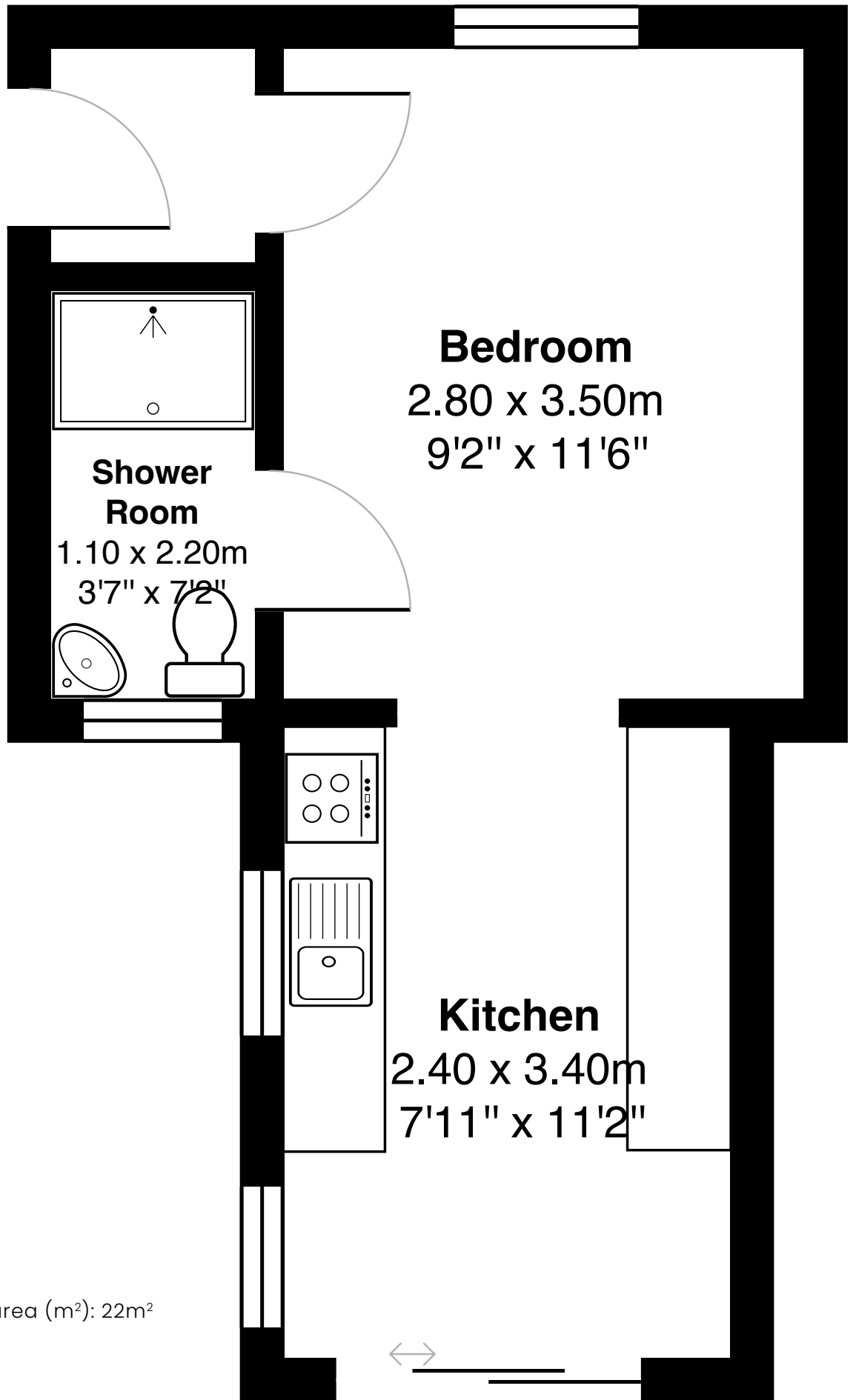




The Bedroom







Gross internal floor area (m²): 22m²

EPC Rating: D



The east-facing patio doors open to spectacular sea views and breathtaking sunrises, while the west side of the lighthouse offers equally impressive sunsets. On clear nights at certain times of the year, the Northern Lights often grace the sky, adding a touch of magic to the tranquil setting.

The property features a shared courtyard and a private, south-facing seating area just outside The Bothy, an ideal spot for alfresco dining when the weather allows.

Please note that due to the steep stairs leading up to the lighthouse, there is no disabled access. The Bothy enjoys its own private entrance for added privacy and convenience.

The Property



The area surrounding Strathy Lighthouse offers a perfect blend of natural beauty and tranquility, making it an ideal retreat. Set on Scotland's rugged northern coast, the landscape features dramatic cliffs, pristine beaches, and sweeping Atlantic views. It's a haven for outdoor enthusiasts, with scenic coastal paths for hiking, and abundant wildlife, including seabirds, seals, orcas, and dolphins. The serene environment also makes it perfect for stargazing, with the Northern Lights often visible on clear nights at certain times of the year. In spring and summer, the surrounding countryside blooms with vibrant wildflowers against the ever-changing seascape.

Thurso, 15 miles to the east, provides essential services, including shops, restaurants, and a train station with links to Inverness. Ferries to the Orkney Islands are also available. Wick, about 45 miles northwest, offers additional services, including supermarkets and healthcare, with regular bus and rail connections to Inverness. Inverness Airport, around 110 miles southeast, offers both domestic and limited international flights.

Strathy Lighthouse is just 4 miles off the North Coast 500 route, making it an ideal base for exploring this famous scenic drive. Though remote, Strathy Lighthouse offers the perfect balance of peace and easy access to nearby towns and transport links, providing both tranquility and connectivity.

The Location

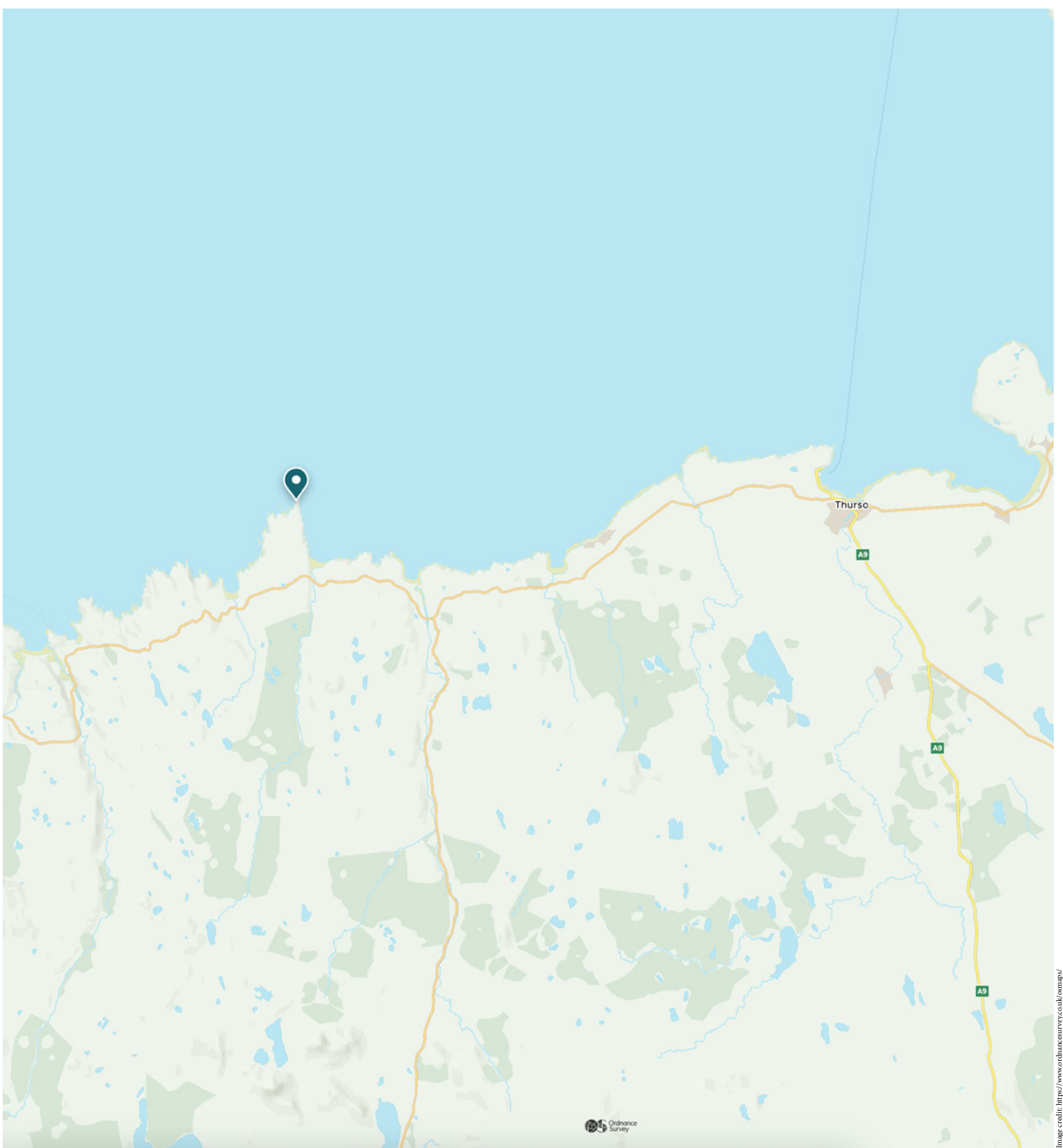


Image credit: <https://www.ordnancesurvey.co.uk/osmap/>

McEwan Fraser Legal

Solicitors & Estate Agents

Tel. 01463 211 116

www.mcewanfraserlegal.co.uk

info@mcewanfraserlegal.co.uk



Text and description
MARIE WOOD
Surveyor



Layout graphics and design
ALAN SUTHERLAND
Designer

Disclaimer: The copyright for all photographs, floorplans, graphics, written copy and images belongs to McEwan Fraser Legal and use by others or transfer to third parties is forbidden without our express consent in writing. Prospective purchasers are advised to have their interest noted through their solicitor as soon as possible in order that they may be informed in the event of an early closing date being set for the receipt of offers. These particulars do not form part of any offer and all statements and photographs contained herein are for illustrative purposes and are not guaranteed or warranted. Buyers must satisfy themselves for the accuracy and authenticity of the brochure and should always visit the property to satisfy themselves of the property's suitability and obtain in writing via their solicitor what's included with the property including any land. The dimensions provided may include, or exclude, recesses intrusions and fitted furniture. Any measurements provided are for guide purposes only and have been taken by electronic device at the widest point. Any reference to alterations to, or use of, any part of the property does not mean that any necessary planning, building regulations or other consent has been obtained. A buyer must find out by inspection or in other ways that all information is correct. None of the appliances/services stated or shown in this brochure have been tested by ourselves and none are warranted by our seller or MFL.