



**ST JAMES PLACE, GEORGE ROAD**  
**BIRMINGHAM, B15 1PQ**

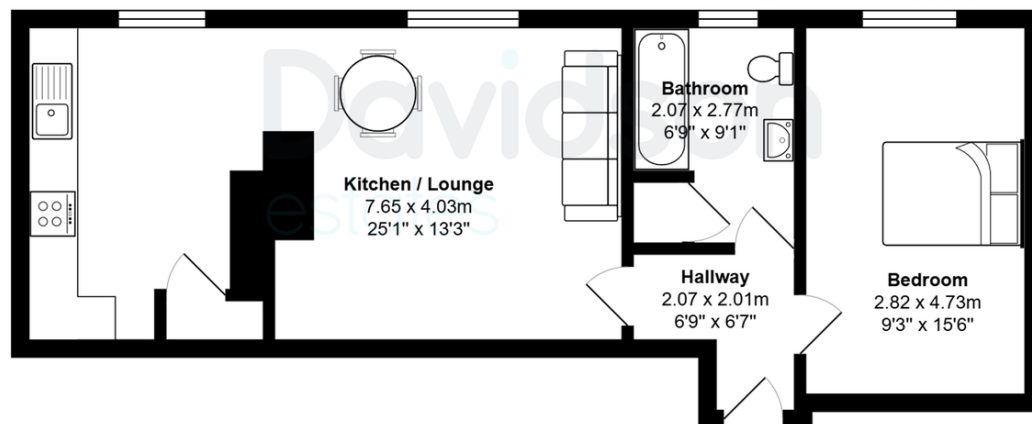
**£225,000**  
**LEASEHOLD**

ST JAMES PLACE | One Bedroom | Parking | Residents Gym, Sauna & Solarium | No Chain | Communal Gardens

**Davidson**

Total Area: 53.0 m<sup>2</sup> ... 571 ft<sup>2</sup>

All measurements are approximate and for display purposes only



Floorplan measurements are for illustrative purpose only. Floor plan by www.sebastiano.co.uk.

Score	Energy rating	Current	Potential
92+	A		
81-91	B		
69-80	C		
55-68	D	58 D	66 D
39-54	E		
21-38	F		

# Davidson

OFFICE  
14 Frederick Road  
Birmingham  
West Midlands  
B15 1JD

0121 455 7727  
info@davidsonstates.co.uk  
www.davidsonstates.co.uk

Agents Note: Whilst every care has been taken to prepare these particulars, they are for guidance purposes only. All measurements are approximate and are for general guidance purposes only and whilst every care has been taken to ensure their accuracy, they should not be relied upon and potential buyers/tenants are advised to recheck the measurements