



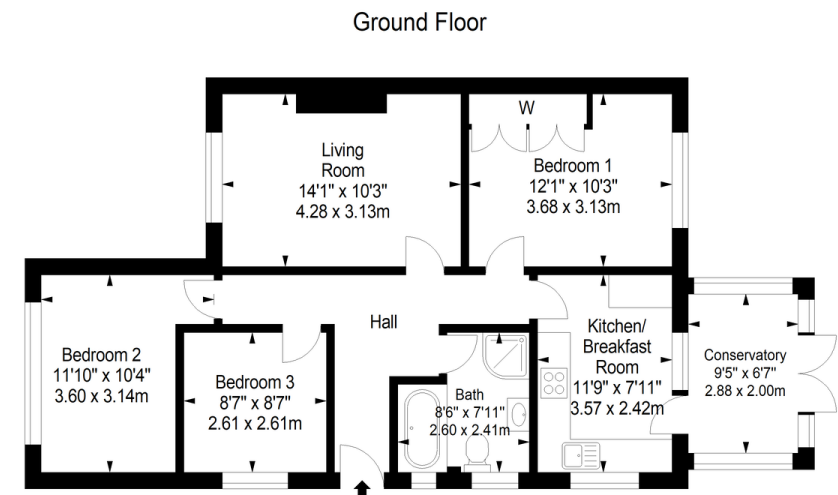
- THREE BEDROOMS
- SEMI DETACHED BUNGLOW
- OFF STREET PARKING
- DOUBLE GLAZING

56 New Road, Worthing, BN13 3JQ

From £400,000

Welcome to this charming bungalow located on New Road. This lovely semi-detached property boasts a warm and inviting atmosphere, perfect for those seeking a cozy and comfortable home.

As you step inside, you are greeted by a spacious reception room, ideal for relaxing or entertaining guests. The property features two well-appointed bedrooms, offering plenty of space for a small family or guests. The bathroom is sleek and modern, providing a tranquil space to unwind after a long day.



Approximate gross internal floor area 75.1 sq m/ 808.4 sq ft
 Whilst every care has been taken to ensure accuracy, dimensions are approximate and for illustrative purposes only.
 All rights reserved.

Score	Energy rating	Current	Potential
92+	A		
81-91	B		85 B
69-80	C		
55-68	D	59 D	
39-54	E		
21-38	F		
1-20	G		

3 Marston Road, Worthing, West
 Sussex, BN14 8BD

www.w-welchestateagents.co.uk
 01903 898000
sales@w-welchestateagents.co.uk

Agents Note: Whilst every care has been taken to prepare these particulars, they are for guidance purposes only. All measurements are approximate and for general guidance purposes only and whilst every care has been taken to ensure their accuracy, they should not be relied upon and potential buyers/tenants are advised to recheck the measurements