



White Hart Lane, N22 5SL

OFFERS IN THE REGION OF **£390,000** soF

This well presented two-bedroom, two-bathroom split-level flat is a fantastic opportunity to own a home in a prime location. Set on the second floor of a charming Victorian building, the property boasts views over the green spaces of Crescent Gardens. The first level features a dual-aspect open-plan lounge with a modern fitted kitchen, a contemporary bathroom, and a well-sized bedroom. On the second level, you'll find a spacious double bedroom with an en-suite shower room and convenient eave storage. Perfectly positioned within walking distance of both Wood Green Underground and Alexandra Park Railway Stations, the property also benefits from easy access to the bustling High Road, offering an array of shops, cafés, bars, and supermarkets. Share of Freehold offered with a newly extended 999-year lease, this home is ideal for first-time buyers, investors, or anyone seeking a stylish and well-connected residence.

T: 0208 365 8900 E: boundsgreen@wilkinsonbyrne.com W: www.wilkinsonbyrne.com



These particulars, whilst believed to be accurate set out as a general outline only for guidance and do not constitute any part of an offer or contract. Intending purchasers should not rely on them as fittings. Room sizes should not be relied upon for carpets and furnishings. The measurements given are approximate. No person in this firm's employment has the authority to make or give any representation or warranty in respect of the property.

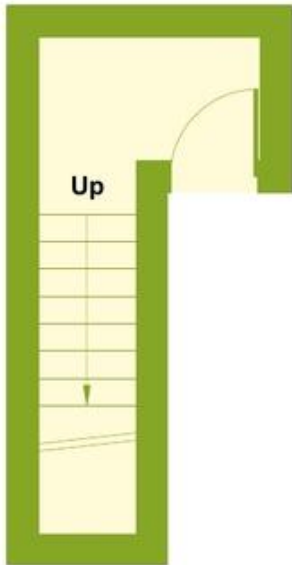
White Hart Lane, Wood Green, London, N22

Approximate Area = 708 sq ft / 65.7 sq m

Limited Use Area(s) = 175 sq ft / 16.2 sq m

Total = 883 sq ft / 82 sq m

For identification only - Not to scale



FIRST FLOOR



Denotes restricted
head height



SECOND FLOOR

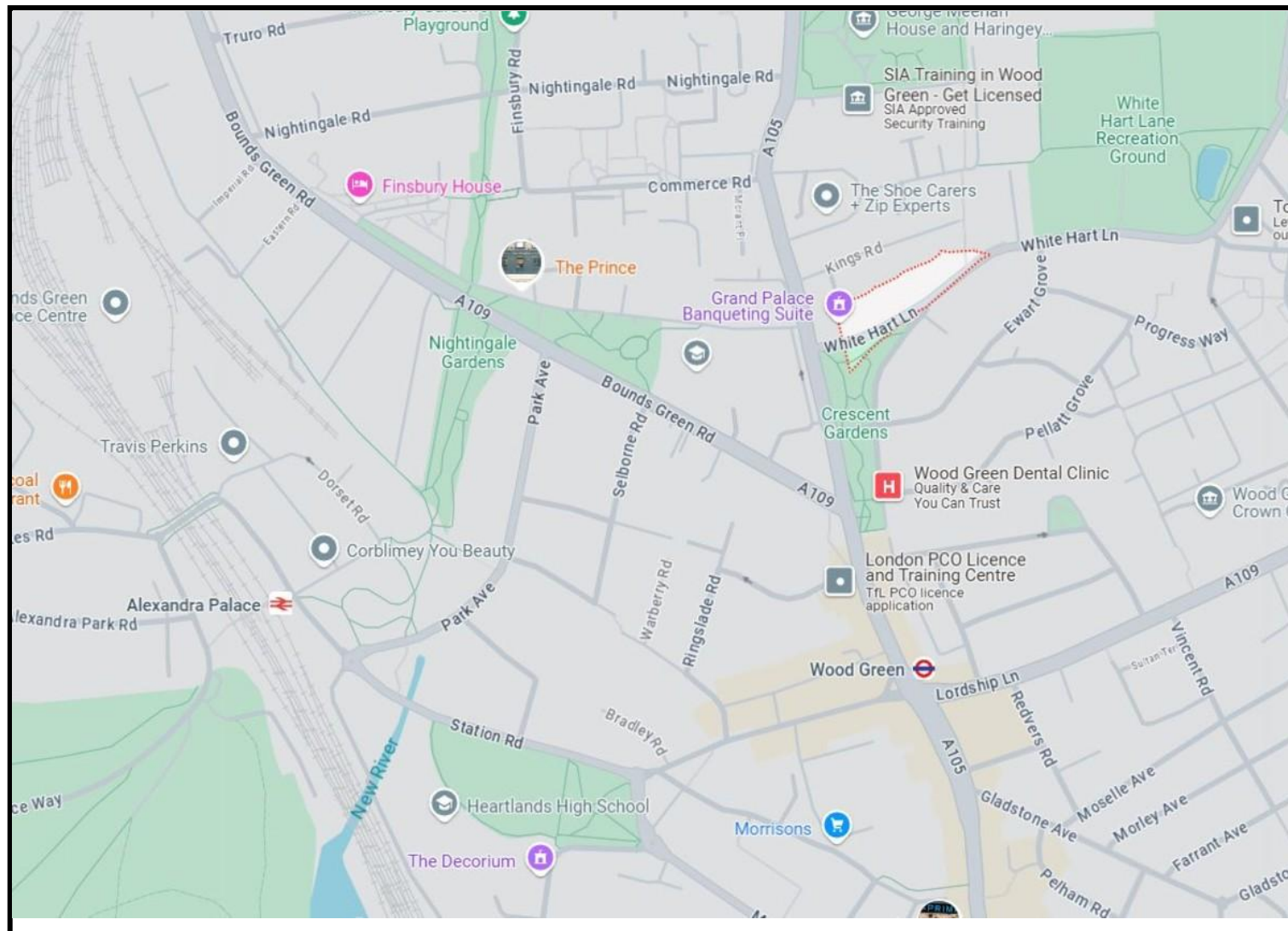


THIRD FLOOR



Floor plan produced in accordance with RICS Property Measurement 2nd Edition, Incorporating International Property Measurement Standards (IPMS2 Residential). ©nichecom 2024. Produced for Wilkinson Byrne. REF: 1215582





Score	Energy rating	Current	Potential
92+	A		
81-91	B		
69-80	C	69 C	76 C
55-68	D		
39-54	E		
21-38	F		
1-20	G		

Bounds Green Office
 3 Latham Court
 Brownlow Road
 London N11 2ES
 0208 - 365 - 8900
boundsgreen@wilkinsonbyrne.com

Turnpike Lane Office
 8 Turnpike Parade
 Green Lanes
 London N15 3EA
 0208 - 888 - 0022
turnpikelane@wilkinsonbyrne.com