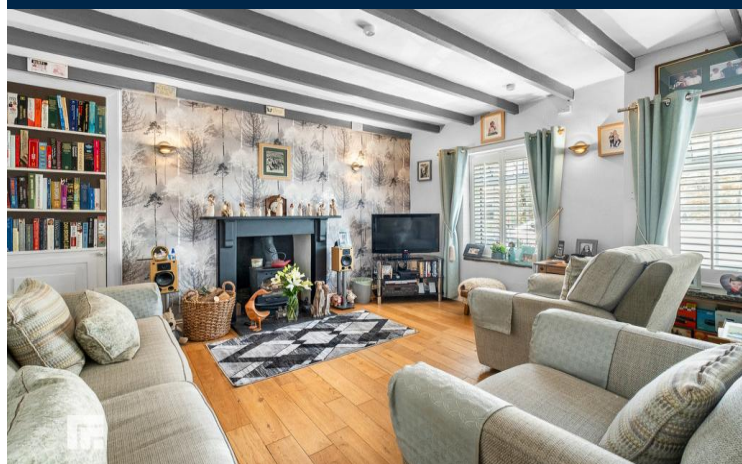




4 TABOR STREET
TAFFS WELL
CARDIFF CF15 7PS

ASKING PRICE OF
£315,000



MID TERRACED HOUSE



3



1



2



2

****TERRACED**

COTTAGEEXTENDED**THREE**

BEDROOMSBEAUTIFULLY MAINTAINED**

REAR GARDENA** beautifully extended three bedroom cottage in the sought after area of Taffs Well. Entrance porch, spacious lounge, dining room, kitchen and WC. To the first floor; master bedroom, a further double bedroom, family bathroom and third bedroom . Beautifully maintained rear garden with stone shed. On road parking. EPC:TBC

TENURE: FREEHOLD

COUNCIL TAX BAND: D

FLOOR AREA APPROX: TBC

VIEWING: STRICTLY BY APPOINTMENT

ENTRANCE PORCH

4' 7" x 2' 10" (1.41m x 0.87m)

Entered via a uPVC door, half wall panelling, built in storage cupboard and tiled flooring. Door into lounge.

LOUNGE

18' 4" x 13' 0" (5.61m x 3.97m)

A spacious family lounge. Slate Mantelpiece with wood burning stove and tiled hearth. Oak flooring. Modern vertical radiator. Two windows to front with stone window sills. Original ceiling beams. Door opening to original stone staircase.

DINING ROOM

11' 9" x 5' 10" (3.60m x 1.78m)

A good sized dining room. Original stone wall. Spotlights. Modern, vertical radiator. Tiled flooring. Double French doors opening into the garden. Archway to kitchen. Door to WC.

CLOAKROOM

5' 10" x 2' 11" (1.79m x 0.89m)

Modern white suite; wash hand basin with black mixer tap and vanity. Tiled walls and flooring. Spotlights.

KITCHEN

12' 4" x 7' 10" (3.77m x 2.41m)

Appointed along two sides, eye and low level cupboards beneath wood effect laminate worktops. Inset, 'Belfast' sink with chrome mixer tap. Freestanding oven and hob. Extractor hood. Plumbing for washing machine, space for fridge freezer and space for dishwasher. Cupboard housing 'Baxi' combi boiler. Spotlights. Loft hatch. Tiled flooring. uPVC window and door to side.

FIRST FLOOR

LANDING

Large storage cupboard. Doors to all rooms. uPVC window to rear. Radiator. Access to roof space. Wooden flooring.

BEDROOM ONE

9' 5" x 7' 1" (2.88m x 2.17m)

A good sized master bedroom. Built in wardrobes. Radiator. Built in over bed cupboard with lights. Wooden flooring. uPVC window to front.

BEDROOM TWO

9' 7" x 6' 4" (2.94m x 1.94m)

A second bedroom. Radiator. Wooden flooring. uPVC window to front.

BEDROOM THREE

9' 0" x 7' 1" (2.75m x 2.18m)

A third bedroom. Built in single door wardrobe. Wooden flooring. uPVC window to rear.

FAMILY BATHROOM

5' 6" x 5' 5" (1.70m x 1.66m)

White suite; low level WC, wall hung wash hand basin with twin chrome taps, bath with chrome mixer tap, chrome shower and handheld shower. Heated towel rail. Tiled walls and flooring. Obscured glass window to rear.

OUTSIDE

REAR GARDEN

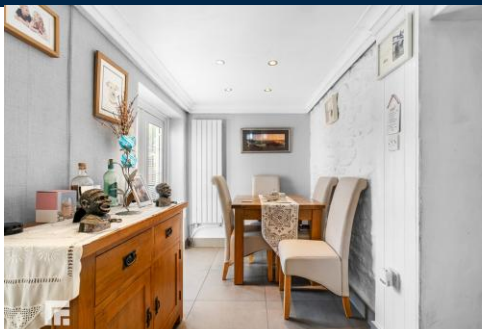
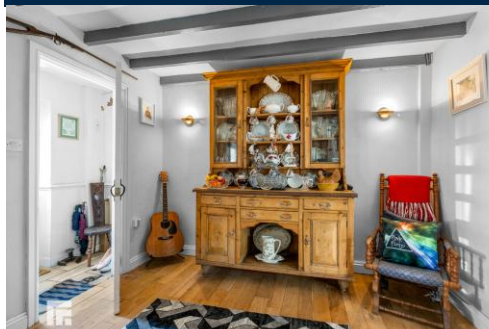
Stone, paved patio with pathway leading to three raised beds and artificial lawn area. Water feature. Mature plants and shrubs. Beautifully maintained. Large, stone shed to rear.

FRONT

On Road parking.



4 TABOR STREET, TAFFS WELL, CARDIFF CF15 7PS



4 TABOR STREET, TAFFS WELL, CARDIFF CF15 7PS

FLOOR PLAN AND EPC TO FOLLOW

RADYR 029 2084 2124

Radyr, 6 Station Road, Radyr, Cardiff, South
Glamorgan, CF15 8AA



Important Notice: These particulars are prepared for guidance only and do not form whole or any part of any offer or contract. Whilst the particulars are given in good faith, they are not to be relied upon as being a statement or representation of fact. They are made without responsibility on the part of MGY Ltd or Vendor/lessor and the prospective purchaser/lessee should satisfy themselves by inspection or otherwise as to their accuracy. Neither MGY Ltd nor anyone in their employ, or the vendor/lessor, imply, make or give any representation/warranty whatsoever in relation to this property.

MGY.CO.UK