



**MALAGA HOUSE
PENSTONE COURT
CENTURY WHARF,
CARDIFF BAY
CARDIFF CF10 5NN**

ASKING PRICE OF
£185,000



ONE BEDROOM APARTMENT



1



1



1



1

****IMMACULATELY PRESENTED* NO CHAIN**** MGY are delighted to bring to market this immaculately presented one bedroom, fourth floor apartment situated within the highly sought after development, Century Wharf. The modern accommodation comprises entrance hallway, large lounge/diner, kitchen, bedroom and bathroom. The extremely spacious property further benefits from a balcony with water views, double glazing throughout, video entry intercom system and an allocated undercroft parking space. The development also benefits from 24 hour concierge and leisure facilities with fully equipped swimming pool, gymnasium, sauna and spa. No chain. EWS1 form in place. *Viewing highly recommended.*

TENURE: LEASEHOLD

COUNCIL TAX BAND: E

FLOOR AREA APPROX: 764.24 SQ FT

VIEWING: STRICTLY BY APPOINTMENT

ENTRANCE HALL

Entered via wooden door, with security spy hole. Laminate wood effect flooring. Underfloor heating. Wall mounted video entry intercom system. Storage cupboard, housing hot water tank. Thermostat control. Spotlights.

LOUNGE/DINER

19' 11" x 15' 1" (6.08m x 4.62m)

Extremely spacious living room. Large double glazed uPVC window to front. Laminate wood effect flooring. Space for dining. Underfloor heating. T.V Aerial point. Telephone point. Thermostat control. Open plan living. Door to balcony with water views.

KITCHEN

7' 6" x 9' 10" (2.30m x 3.00m)

Tiled flooring. Modern fitted wall and base units, with work surfaces incorporating double stainless steel sink and drainer. Ample storage, with under unit spotlights. Built in oven and four ring electric hob, with stainless steel extractor hood over. Splash back. Integrated dishwasher and washer/dryer. Space for fridge freezer. Underfloor heating. Thermostat control. Extractor fan. Spotlights.

BEDROOM

23' 10" x 8' 9" (7.27m x 2.67m)

Large double bedroom. Double glazed uPVC window and patio door, leading to large balcony with water views. Laminate wood effect flooring. Underfloor heating. Two built in double wardrobes. T.V Aerial point. Telephone point. Thermostat control.

BATHROOM

8' 9" x 7' 2" (2.69m x 2.20m)

Modern bathroom. Tiled flooring. Fully tiled walls. Wall mounted wash hand basin, with mixer tap. W.C. Panelled bath, with mains shower over and glass shower screen. Heated towel rail. Shaver point. Extractor fan. Spotlights.

BALCONY

Large decked balcony with water views, with glass surround. External lighting. Accessed from the lounge/diner.

PARKING

Secure gated access to one allocated undercroft parking space. Ample visitor parking.

FACILITIES

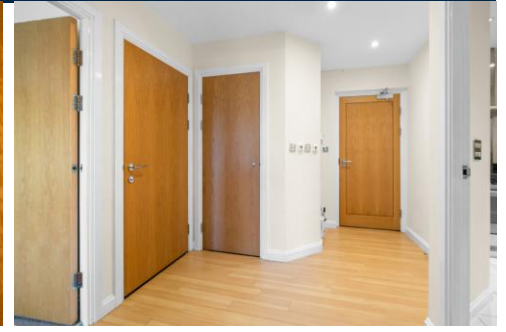
The gated development benefits from 24 hour concierge and leisure facilities, with fully equipped swimming pool, gymnasium, sauna and spa.

TENURE

MGY are advised that the property is leasehold, with a term of 999 years from 2001. Service charges of £ per annum, which includes water rates, building insurance, onsite concierge and leisure facilities, video entry intercom system, CCTV, reserve fund, lift maintenance, annual boiler servicing, maintenance of internal and external communal areas, regular cleaning and refuse disposal, bike storage, secure gated fob access to an allocated parking space, visitor parking and parking management. Ground rent £ per annum.

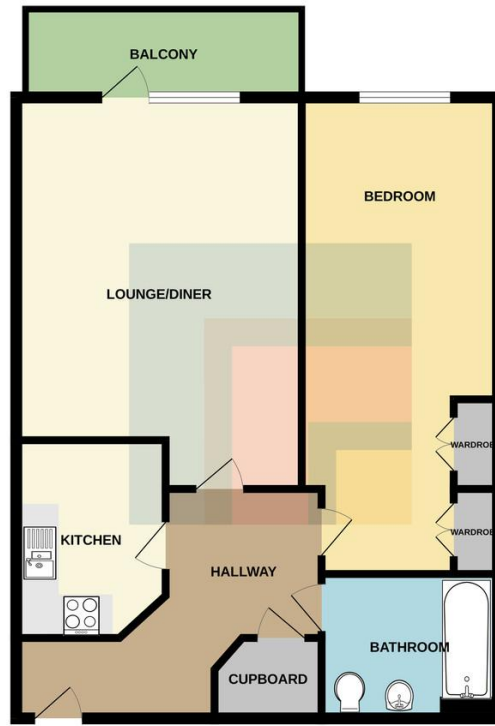


MALAGA HOUSE, PENSTONE COURT, CENTURY WHARF,
CARDIFF BAY, CARDIFF CF10 5NN

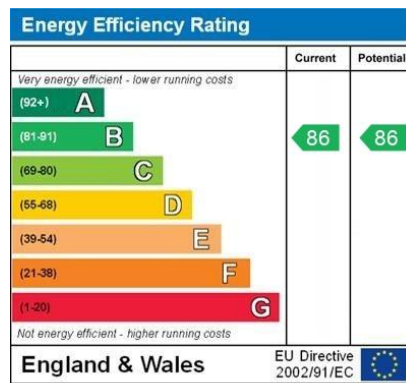


MALAGA HOUSE, PENSTONE COURT, CENTURY WHARF, CARDIFF BAY, CARDIFF CF10 5NN

FOURTH FLOOR



Whilst every attempt has been made to ensure the accuracy of the floorplan contained herein, measurements of doors, windows, rooms and any other items are approximate and no responsibility is taken for any error, omission or mis-statement. This plan is for illustrative purposes only and should be used as such by any prospective purchaser. The services, systems and appliances shown have not been tested and no guarantee as to their operability or efficiency can be given.
Made with Metropix ©2020



CARDIFF 029 2046 5466

13 Mount Stuart Square, Cardiff Bay, Cardiff,
South Glamorgan, CF10 5EE



Important Notice: These particulars are prepared for guidance only and do not form whole or any part of any offer or contract. Whilst the particulars are given in good faith, they are not to be relied upon as being a statement or representation of fact. They are made without responsibility on the part of MGY Ltd or Vendor/lessor and the prospective purchaser/lessee should satisfy themselves by inspection or other wise as to their accuracy. Neither MGY Ltd nor anyone in their employ, or the vendor/lessor, imply, make or give any representation/warranty whatsoever in relation to this property.

MGY.CO.UK