

COOPER & TANNER

THE ART OF AGENCY



Buttercup Lane, Street

A very spacious and well presented four bedroom semi-detached house within this sought after location

Asking Price Of £263,950

To Contact
COOPER & TANNER
Street Office

Telephone: 01458 840416
Address: 58a High Street, Street, Somerset, BA16 0EQ
E-mail: street@cooperandtanner.co.uk

www.cooperandtanner.co.uk

- Impressive semi-detached house
- Spacious entrance hall
- Lounge with gas fire
- Good size dining room
- Modern kitchen
- Four bedrooms
- Bathroom and En-suite
- Low maintenance gardens
- Single garage and driveway parking
- Sought after location

Description

Presented in excellent order and enjoying spacious room proportions throughout this modern four bedroom house deserves an early viewing. The accommodation offers an impressive entrance hall with a with two storage cupboards, a downstairs cloakroom, a lounge with a gas fire, a spacious dining room, a kitchen/breakfast room with a range of wall and base units, an integrated cooker/hob, dishwasher and washing machine. The kitchen also offers a door out to the rear garden and room for a table



and chairs.

Finally on the ground floor there is a conservatory which spills out to the private and enclosed rear gardens.

On the first floor there are four bedrooms and a family bathroom. The master bedroom benefits from an en-suite shower room and fitted wardrobes.

Outside

To the front of the property there are low maintenance gardens laid to stone chippings with a path to the front door. The gardens to the rear are also low maintenance, fully enclosed and provide a patio seating area bordered by mature plants and shrubs and a timber gate to the rear which leads to the single garage and parking for two cars

Services

Mains water, drainage, electricity and gas

Tenure

Freehold

EPC Rating

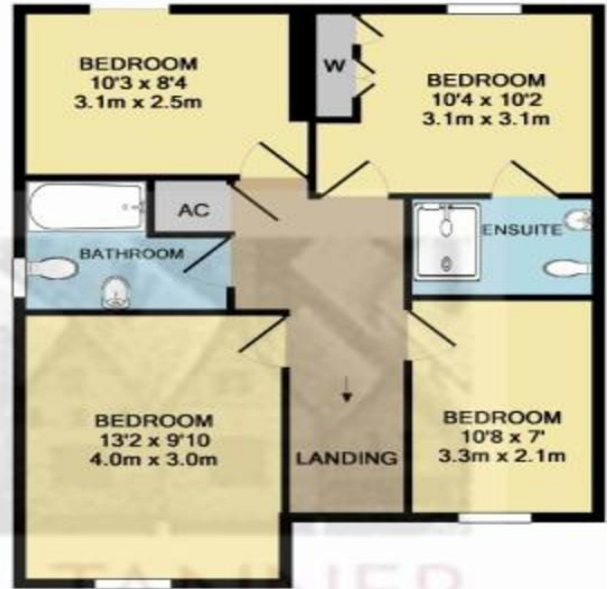
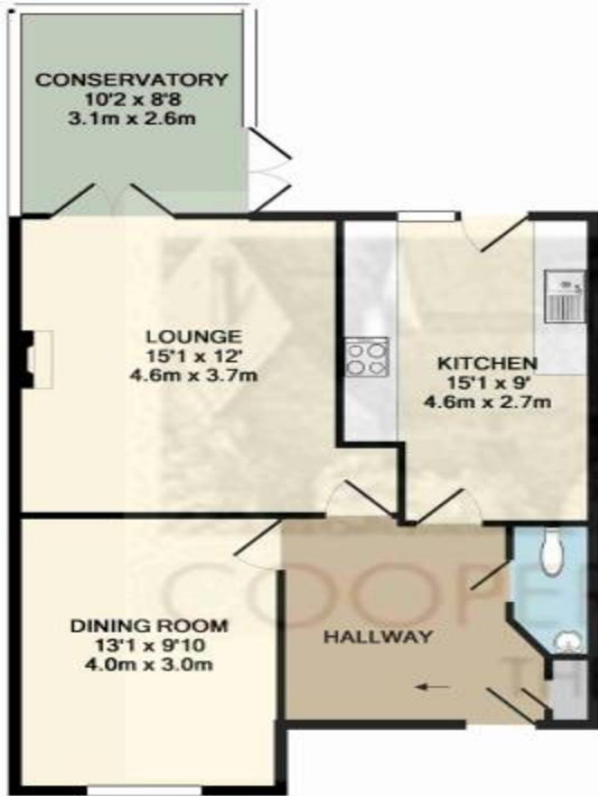
78

Viewing

Strictly through Cooper & Tanner on 01458 840416



2 Buttercup Lane, Street, Somerset, BA16 0PJ



GROUND FLOOR

1ST FLOOR

Whilst every attempt has been made to ensure the accuracy of the floor plan contained here, measurements of doors, windows, rooms and any other items are approximate and no responsibility is taken for any error, omission, or mis-statement. This plan is for illustrative purposes only and should be used as such by any prospective purchaser. The services, systems and appliances shown have not been tested and no guarantee as to their operability or efficiency can be given.
Made with Metropix ©2012.

ROOM DIMENSIONS

- Living Room 15'1" x 12'00"
- Dining Room 13'1" x 9'9"
- Kitchen 15'1" x 9'00"
- Conservatory 10'2" x 8'8"
- Master Bedroom 13'2" x 9'10"
- Second Bedroom 10'4" x 10'2"
- Third Bedroom 10'3" x 8'4"
- Fourth Bedroom 10'8" x 7'00"



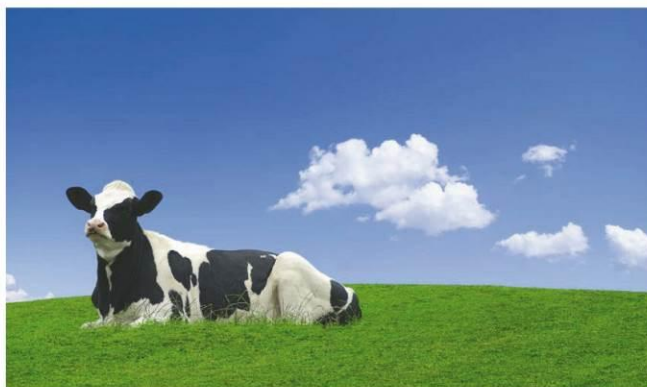
Asking Price Of £263,950



COOPER & TANNER

THE ART OF AGENCY

- Residential Sales and Lettings
- Surveys and Valuations
- Livestock Auctions
- Sale Rooms
- Country Houses, Farms & Land
- Commercial Property
- Development
- Machinery and Equipment Sales
- Land and Property Auctions



YOUR LOCAL
COOPER & TANNER
SALES, LETTINGS
& PROFESSIONAL OFFICES

CASTLE CARY: 01963 350327
FROME: 01373 455060
GLASTONBURY: 01458 831077
LONDON: 0207 8390888
SHEPTON MALLET: 01749 372200

STANDERWICK: 01373 831010
STREET: 01458 840416
WARMINSTER: 01985 215579
WELLS: 01749 676524
SURVEYS: 01985 217711