



Zander Road, Calne, Wiltshire **Guide £150,000**





YOUR MOVE





Zander Road, Calne,
Wiltshire

Guide £150,000

Property Description

MUST BE VIEWED!! A brilliant opportunity to purchase this two bedroom first floor apartment situated on the popular lansdowne park development and within walking distance of local amenities. Accommodation to this property is light and spacious through-out and comprises of entrance hall, kitchen area, lounge dining area, two double bedrooms and bathroom. additional benefits include allocated parking space, separate entrance and has no management fees. EPC grade C. A copy of the EPC will be available upon request.

Our View

Superb ! first floor apartment with two excellent sized bedrooms and a open plan living area. Additional benefits includes allocated parking and gas central heating. With the bonus having NO MANAGEMENT FEES AND BEING SOLD WITH NO ONWARD CHAIN!

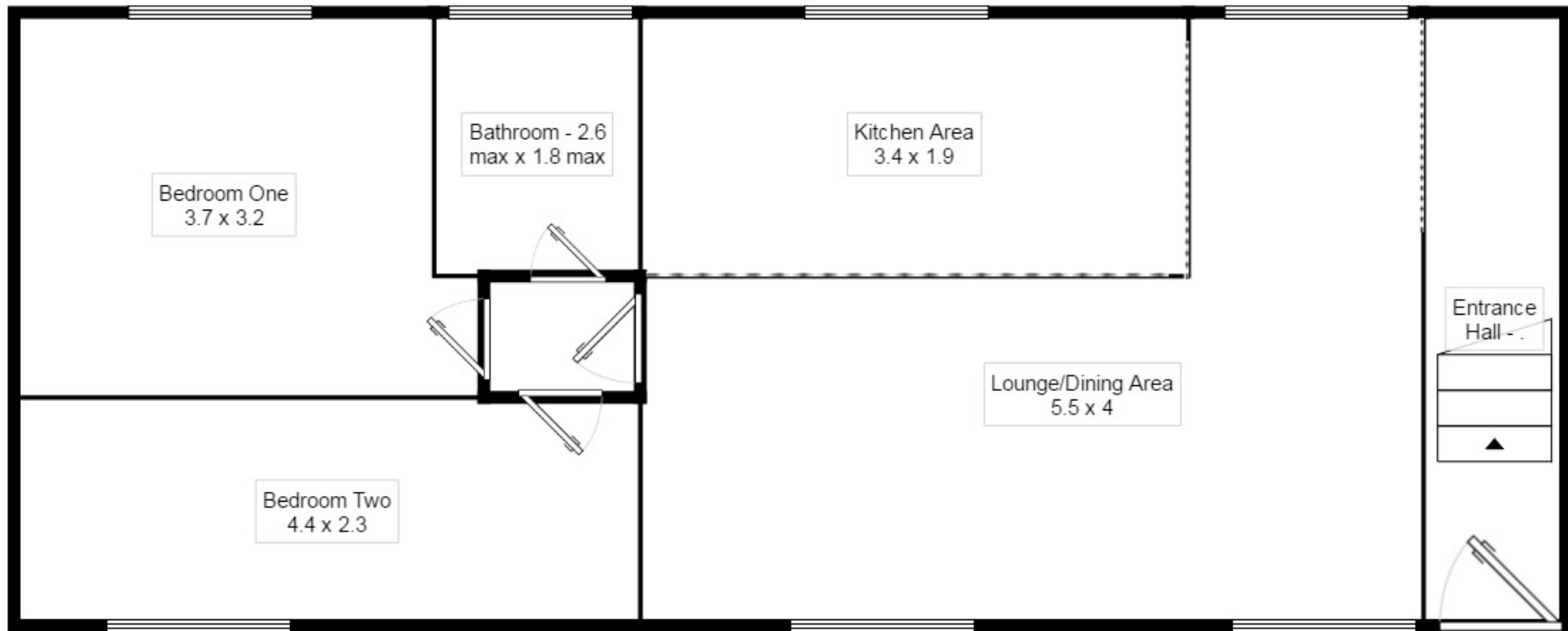
Location

Calne is well placed within reach of both junctions 16 and 17 of the M4 motorway (approx 8 miles) and approx 5 miles from the busy market town of Chippenham with its mainline railway station with regular intercity service to London Paddington (1hr 10mins).



EPC Grade C
For full EPC please contact the branch

Ground Floor
Floor Size: 45.9 m², 494.4 ft²



Measurements are approximate. Not to scale. For illustrative purposes only.

IMPORTANT NOTE TO PURCHASERS: We endeavour to make our sales particulars accurate and reliable, however, they do not constitute or form part of an offer or any contract and none is to be relied upon as statements of representation or fact. The services, systems and appliances listed in this specification have not been tested by us and no guarantee as to their operating ability or efficiency is given. All measurements have been taken as guide to prospective buyers only, and are not precise. Floor plans where included are not to scale and accuracy is not guaranteed. If you require clarification or further information on any points, please contact us, especially if you are travelling some distance to view. Fixtures and fittings other than those mentioned are to be agreed with the seller.

Your Move is a trading name of your-move.co.uk, registered in England at Newcastle House, Albany Court, Newcastle Business Park, Newcastle upon Tyne NE4 7YB (number 01864469).

Wood Street, Calne, Wiltshire, SN11 0BZ

01249 813907 * Calne@your-move.co.uk

*Calls may be recorded and/or monitored for training and/or security purposes.

