



Calluna Close, Weston-Super-Mare, Avon **Guide £240,000**









## Calluna Close, Weston-Super-Mare, Avon

**Guide £240,000**

### Property Description

A great family home offering a modern kitchen separate dining room, living room, three bedrooms (master with en-suite shower room) and family bathroom. Outside the property benefits from a low maintenance rear garden, single garage and parking. EPC grade D. A copy of the EPC will be available upon request.

### Our View

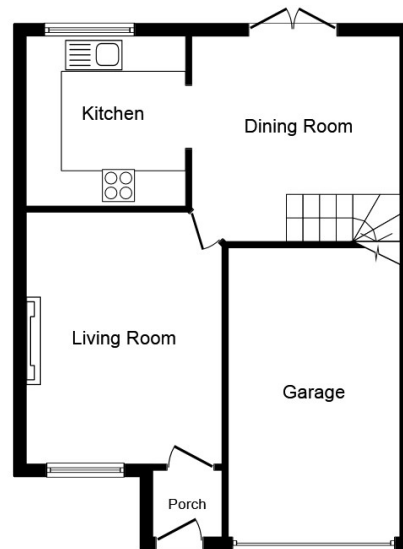
Accompanied viewings - CALL NOW but BE QUICK!!

### Location

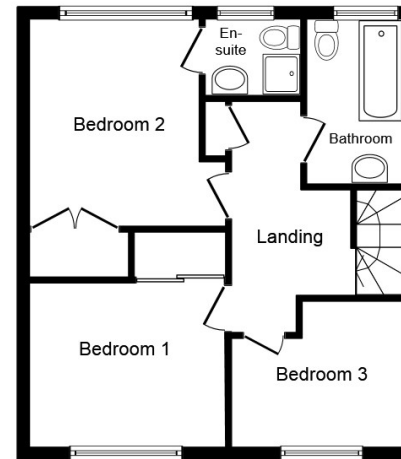
A well presented detached house in the ever popular location of Wick St Lawrence. If you need easy access to M5 corridor, amenities and schools then make sure this is on your list to view



**EPC Grade D**  
For full EPC please contact the branch



**Ground Floor**



**First Floor**

This plan is for illustration purposes only and may not be representative of the property.  
Plan not to scale.

Powered by [audioagent.com](http://audioagent.com)

IMPORTANT NOTE TO PURCHASERS: We endeavour to make our sales particulars accurate and reliable, however, they do not constitute or form part of an offer or any contract and none is to be relied upon as statements of representation or fact. The services, systems and appliances listed in this specification have not been tested by us and no guarantee as to their operating ability or efficiency is given. All measurements have been taken as guide to prospective buyers only, and are not precise. Floor plans where included are not to scale and accuracy is not guaranteed. If you require clarification or further information on any points, please contact us, especially if you are travelling some distance to view. Fixtures and fittings other than those mentioned are to be agreed with the seller.

Your Move is a trading name of [your-move.co.uk](http://your-move.co.uk), registered in England at Newcastle House, Albany Court, Newcastle Business Park, Newcastle upon Tyne NE4 7YB (number 01864469).

\*Calls may be recorded and/or monitored for training and/or security purposes.

Wood Street, Calne, Wiltshire, SN11 0BZ

01249 813907 \* [Calne@your-move.co.uk](mailto:Calne@your-move.co.uk)

