



Bloxham
Oxfordshire

A Refurbished Three Bedroom Grade II Listed Character Cottage Offering a Wealth of Charm Set Over Three Floors.

The accommodation briefly comprises: Sitting Room, Reception Room, Cloakroom, Kitchen, Cellar, Three Bedrooms and Bathroom.

Outside the property benefits from a Fully Enclosed Rear Garden and Garage.

The property benefits from Gas Central Heating.

The picturesque village of Bloxham offers many amenities including a convenience store, Post Office, hairdressers, three Public Houses offering good food, doctors and dentist.

Also within the village there is the Bloxham Church of England Primary School and secondary education at the Warriner School. Bloxham School is an independent co-educational school catering for boarders and day pupils. Tudor Hall Girls School is approximately 2 miles outside the village.

Further comprehensive facilities can be found in both Banbury and Oxford whilst access to the M40 motorway can be gained at Junctions 10 or 11. Mainline stations are also available from Banbury and Bicester.

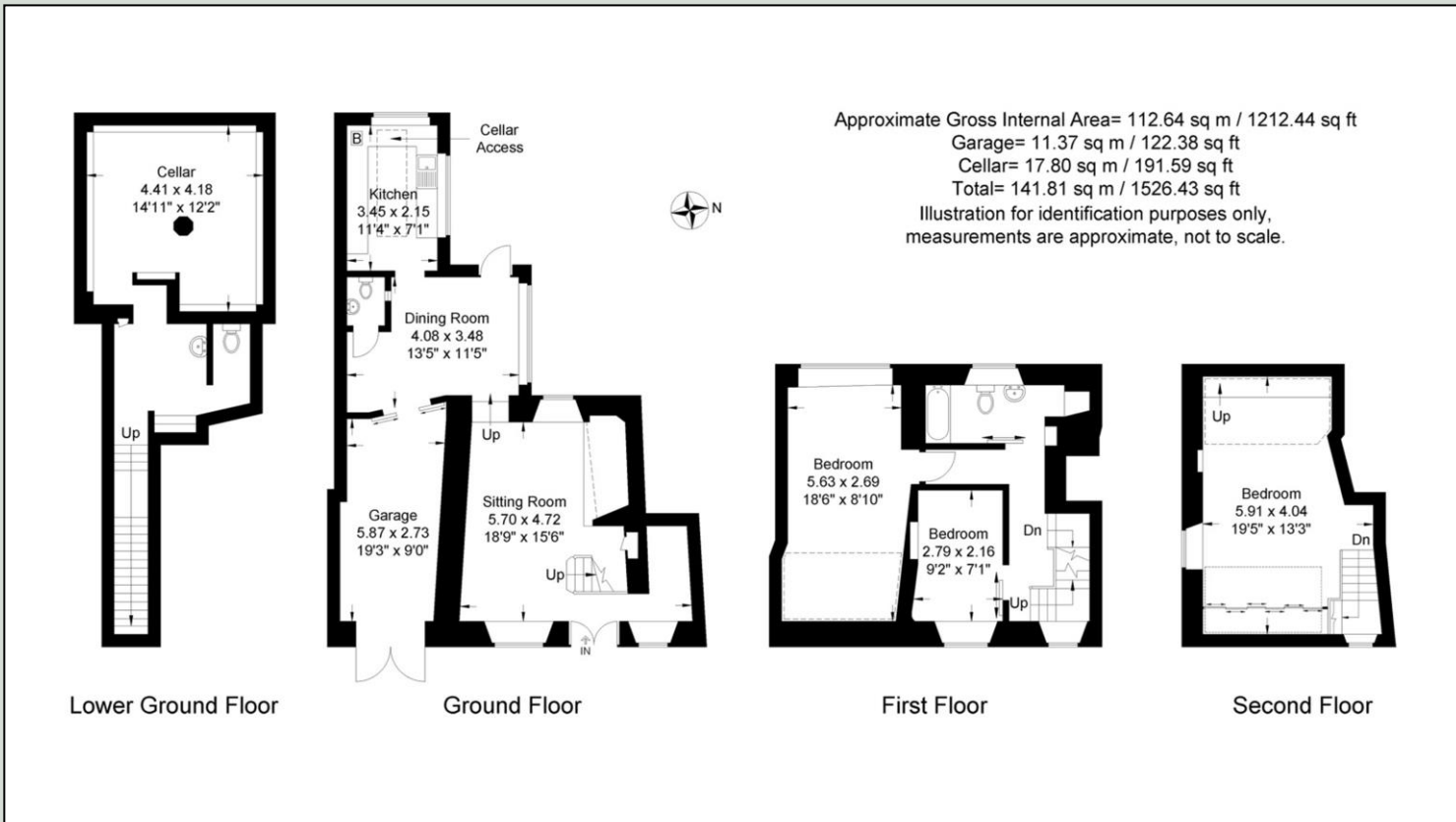




- Sitting Room
- Reception Room
- Cloakroom
- Kitchen
- Cellar
- Three Bedrooms
- Bathroom
- Garage
- Fully Enclosed Rear Garden
- Gas Central Heating



Price Guide: £269,995



Local Authority
 Cherwell District Council

Tenure
 Freehold

Additional Information
 Banbury c. 3 miles
 Deddington c. 4 miles
 Chipping Norton c. 9 miles
 Oxford c. 23 miles
 Birmingham c. 55 miles
 London c. 81 miles
 M40 access c. 6 miles
 Banbury to London Marylebone
 c. 1 hour.



Market House, Market Square, Deddington, Oxfordshire, OX15 0SB
 Tel: 01869 338898
 Email: deddington@mark-david.co.uk
 www.mark-david.co.uk

Branches also at: Banbury, Chipping Norton & London

Important Notice

Mark David Estate Agents for themselves and their clients give notice that:-
 1. They are not authorised to make or give representation or warranty in relation to this property, either on their own behalf or on behalf of the Seller. They assume no responsibility for any statement made in these particulars. These particulars do not form part of any offer or contract and must not be relied upon as statements or representations of fact.
 2. Whilst every attempt has been made to ensure the accuracy of the floorplan contained here, measurements of doors, windows, rooms and any other items are approximate and no responsibility is taken for any error, omission, or mis-statement.
 3. All areas, measurements or distances are approximate. The particulars are intended for guidance only and are not necessarily comprehensive. A wide angle lens may have been used in photography. Mark David Estate Agents have not tested appliances or services and it should not be assumed that the property has all necessary planning, building regulation and other consents. Buyers must satisfy themselves with the property by inspection or otherwise.
 4. Reference to any mechanical or electrical equipment does not constitute a representation that such equipment is capable of fulfilling its function and prospective Buyers must make their own enquiries.
 5. They have no responsibility for any expenses or costs incurred by prospective Buyers in inspecting properties which have been sold, let or withdrawn. Applicants are advised to contact the Agent to check availability and any other information of particular importance to them, prior to inspecting the property, particularly if traveling some distance.