

Clematis Court

Cheltenham GL52 8JD



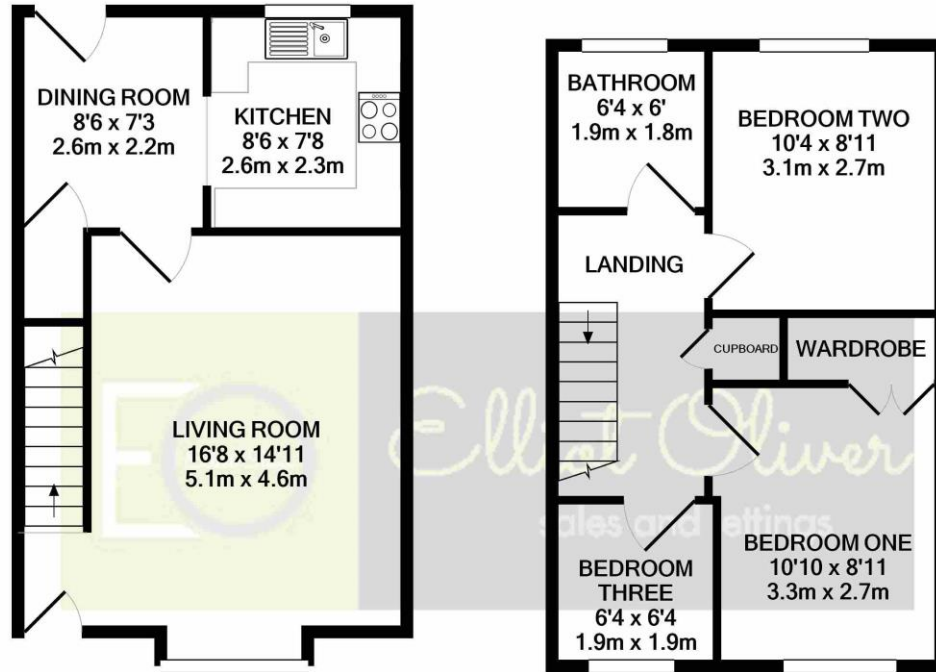
Clematis Court, Bishops Cleeve GL52 8JD

Set on the outskirts of the Bishops Cleeve village this is a very well presented, three bedroom Robert Hitchins home.

The accommodation is simple yet effective and consists on the ground floor of a cosy lounge with bay window, and a stylish kitchen/dining room (separated with an archway) at the rear. Here the kitchen offers ample cupboard space and enough room for the utilities. The upstairs you have two double bedrooms, a single bedroom/study and a stylish re-fitted bathroom. Here you will find a three piece suite with shower over bath. The outside offers two parking spaces, and there is a pretty rear garden, perfect for those summers evenings. Please call/email to arrange your visit.







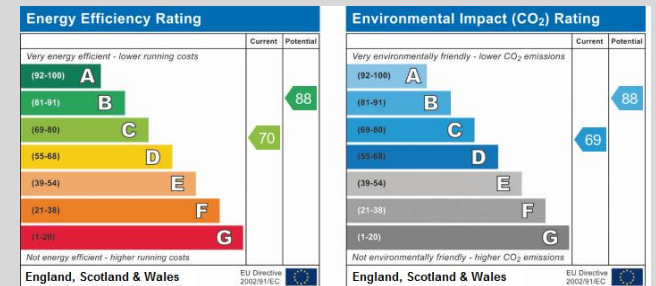
GROUND FLOOR
APPROX. FLOOR
AREA 363 SQ.FT.
(33.7 SQ.M.)

1ST FLOOR
APPROX. FLOOR
AREA 356 SQ.FT.
(33.0 SQ.M.)

TOTAL APPROX. FLOOR AREA 719 SQ.FT. (66.8 SQ.M.)

Whilst every attempt has been made to ensure the accuracy of the floor plan contained here, measurements of doors, windows, rooms and any other items are approximate and no responsibility is taken for any error, omission, or mis-statement. This plan is for illustrative purposes only and should be used as such by any prospective purchaser. The services, systems and appliances shown have not been tested and no guarantee as to their operability or efficiency can be given

Made with Metropix ©2020



Address:
Clenials Court



OFFICE

101 Promenade,
Cheltenham,
Gloucestershire, GL50
1NW

info@elliotoliver.co.uk

Agents Note: Whilst every care has been taken to prepare these sales particulars, they are for guidance purposes only. All measurements are approximate and for general guidance purposes only and whilst every care has been taken to ensure their accuracy, they should not be relied upon and potential buyers are advised to recheck the measurements