

Offers In Excess Of **£200,000**

tel: **01442 214151**



Bury Green, Hemel Hempstead HERTS HP1 1XP

Clements Estate Agents are pleased to offer this spacious one double bedroom ground floor maisonette offering good sized rooms, double glazing, gas central heating, doors on to a private patio area and laid to lawn communal gardens, allocated & visitor parking and a convenient location situated in this popular development close to the Town Centre with its many shops and amenities. NO UPPER CHAIN!

- GROUND FLOOR MAISONETTE
- ONE BEDROOM
- COMMUNAL GARDENS
- ALLOCATED PARKING
- NO UPPER CHAIN



Property Description

Clements Estate Agents are pleased to offer this spacious one double bedroom ground floor maisonette offering good sized rooms, double glazing, gas central heating, doors on to a private patio area and laid to lawn communal gardens, allocated & visitor parking and a convenient location situated in this popular development close to the Town Centre with its many shops and amenities. NO UPPER CHAIN!

DOUBLE GLAZED DOOR LEADING TO:

ENTRANCE HALLWAY

Doors to rooms, built in cupboards, wall mounted radiator.

LOUNGE/DINER

15' 5" x 10' 2" (4.7m x 3.1m)

A good sized room with double glazed patio doors to rear leading out on to the patio area and communal gardens, wall mounted radiator, TV point, leading to:

KITCHEN

8' 2" x 6' 2" (2.49m x 1.88m)

Comprising a range of wall and floor mounted units with fitted work surfaces and an inset stainless steel sink with drainer, a built in oven with oven with gas hob and extractor hood over, plumbing and space for a washing machine, space for a fridge, part tiled walls, double glazed window to front, wall mounted boiler.

BEDROOM

13' 5" x 8' 5" (4.09m x 2.57m)

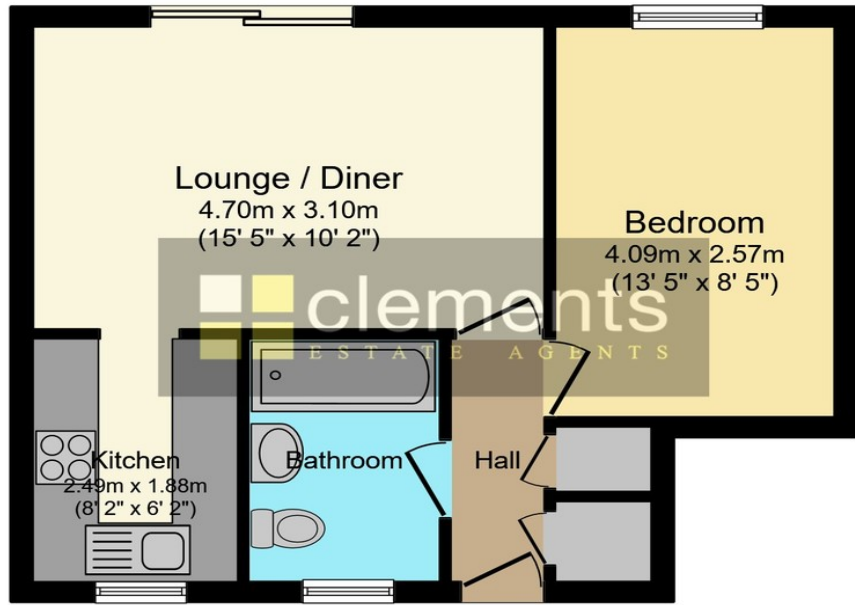
A good sized double aspect room with double glazed windows to side and rear, a range of fitted mirror front wardrobes, wall mounted radiator.

BATHROOM

Comprising a bath with mixer taps and shower attachment with shower screen, low level WC, wash hand basin with a vanity unit beneath, part tiled walls, a frosted double glazed window to front.

OUTSIDE

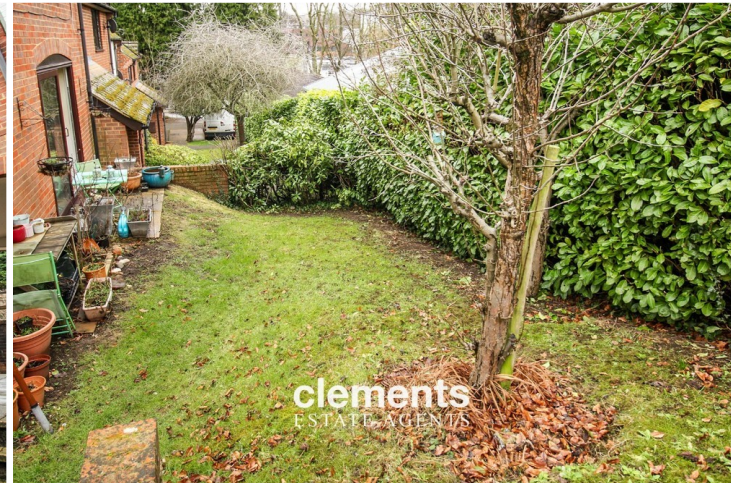
Patio area leading to mainly laid to lawn communal gardens. Allocated & visitor parking to the front.



Floor area 39.0 sq. m. (420 sq. ft.) approx

Total floor area 39.0 sq. m. (420 sq. ft.) approx

This Floor Plan is for illustration purposes only and may not be representative of the property. The position and size of doors, windows and other features are approximate. Unauthorized reproduction prohibited. © PropertyBOX



Tenure **Leasehold**

Council Tax Band

Viewing Arrangements **Strictly by appointment**

Contact Details

142 Marlowes

Hemel Hempstead

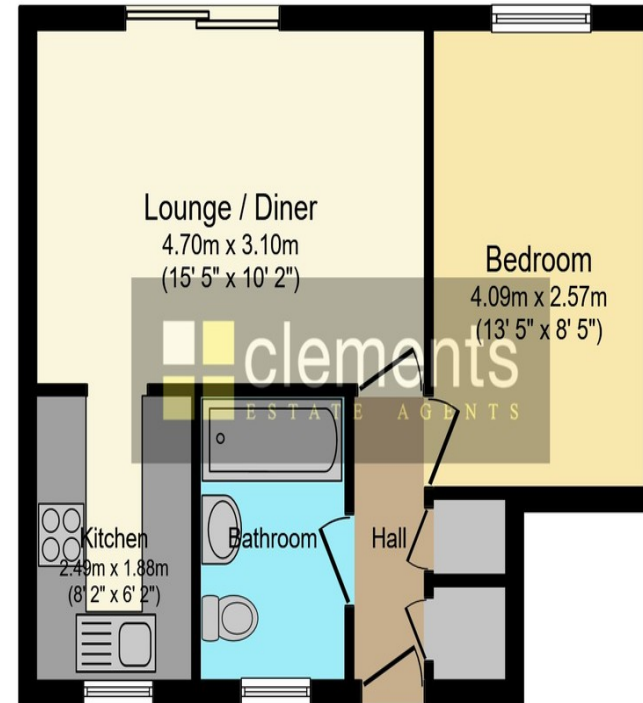
Hertfordshire

HP1 1EZ

Email: sales@clementsestateagents.co.uk

Tel: 01442 214151

www.clementsestateagents.co.uk



Floor area 39.0 sq. m. (420 sq. ft.) approx

Total floor area 39.0 sq. m. (420 sq. ft.) approx

This Floor Plan is for illustration purposes only and may not be representative of the property. The position and size of doors, windows and other features are approximate. Unauthorized reproduction prohibited. © PropertyBOX

Agents Note: Whilst every care has been taken to prepare these sales particulars, they are for guidance purposes only. All measurements are approximate and are for general guidance purposes only and whilst every care has been taken to ensure their accuracy, they should not be relied upon and potential buyers are advised to recheck the measurements.