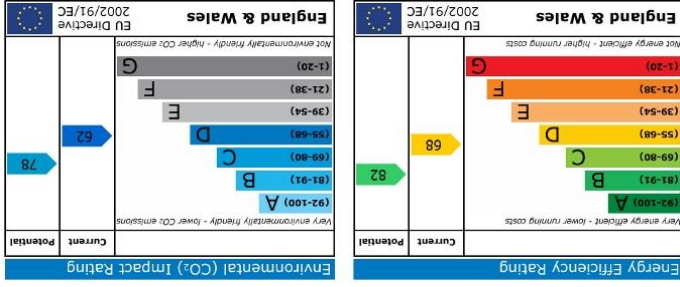
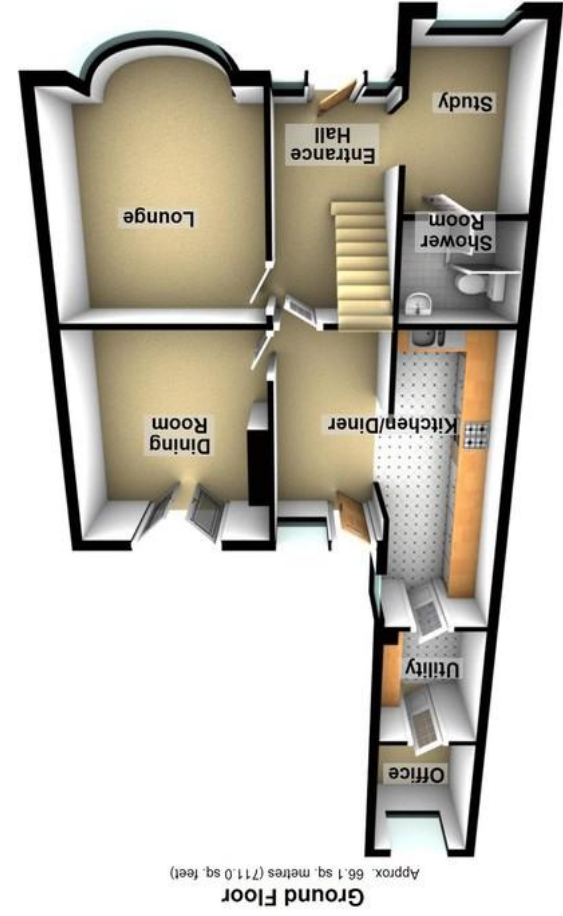


Agents Note: Whilst every care has been taken to prepare these particulars, they are for guidance purposes only. All measurements are approximate and whilst every care has been taken to ensure their accuracy, they should not be relied upon and potential buyers/tenants are advised to recheck the measurements.



Total area: approx. 120.9 sq. metres (1300.9 sq. feet)





84 High Storrs Drive | High Storrs | Sheffield | S11 7LN

Property Tenure: Freehold

Recently finished to an incredibly high standard by the current vendors is this stunning, immaculately presented, four double bed roomed, bay windowed semi detached family home. Having been tastefully extended to the rear and side to create this super spacious feel throughout that total an impressive 1,300 sq feet of beautiful accommodation across two floors and allows the new buyers if required to further explore a loft conversion if needed. With off road parking for three vehicles to the front and a fabulous rear landscaped private garden that enjoys a bespoke garden room that can be used as a work from home office. Located on this exceptionally popular residential road within the very heart of High Storrs the property is pitch perfect for the growing family market and simply must be viewed internally to be fully appreciated. Falling within catchment for Ofsted rated excellent Ecclesall Juniors and High Storrs secondary together with The Peak District being literally on the doorstep.



PROPERTY FEATURES

- FOUR BEDROOMED SEMI DETACHED FAMILY HOME
- BESPOKE GARDEN ROOM THAT CAN BE USED AS A WORK FROM HOME OFFICE
- TWO FLOORS OF BEAUTIFUL ACCOMMODATION THAT TOTALS 1,300 SQ FEET
- PARKING FOR THREE CARS TO THE FRONT AND LANDSCAPED REAR PRIVATE GARDEN
- TASTEFULLY EXTENDED TO THE SIDE AND REAR
- ECCLESALL JUNIORS AND HIGH STORRS SECONDARY SCHOOL CATCHMENTS
- VIEWING ESSENTIAL TO FULLY APPRECIATE THE STYLE AND SIZE ON OFFER
- HEART OF ULTRA POPULAR HIGH STORRS
- OPPORTUNITY TO EXTEND TO THE LOFT SUBJECT TO PLANNING IF REQUIRED

