

GUIDE PRICE
£1,295,000
Kingfisher House
Juniper Drive, SW18 1TY

PROPERTY SUMMARY

A stylish dual aspect apartment offering comfortable modern living with direct river views in the award-winning Battersea Reach riverside development. Located on the third floor with a westerly aspect, the property offers approx. 1,243 sqft of accommodation. Comprising a master suite with ensuite and balcony, guest bedroom and bathroom, study/third bedroom, generous reception room, semi-open plan kitchen and private terrace.

3



2



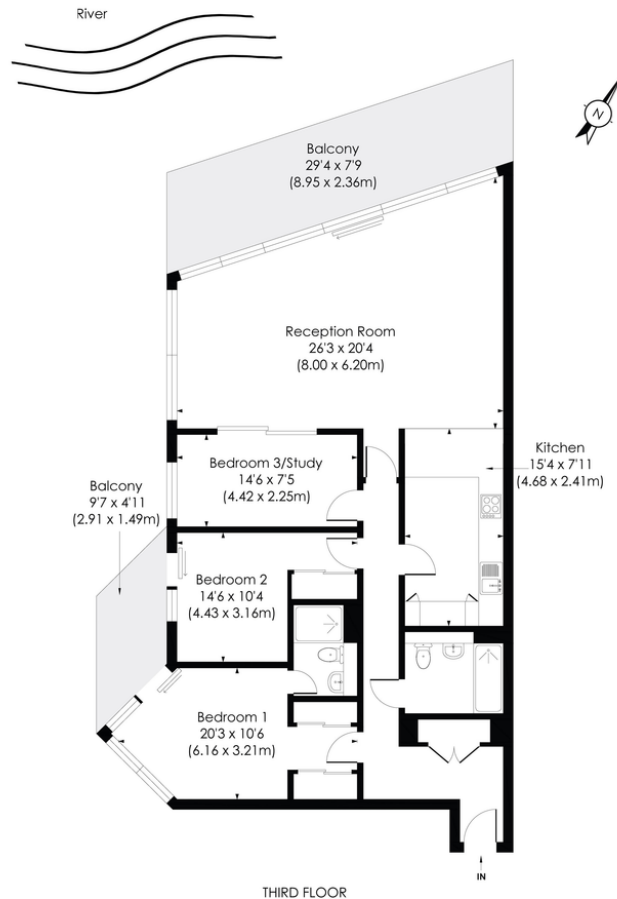
1





KINGFISHER HOUSE, SW18

Approx. Gross Internal Floor Area
1243 Sq. ft/115.56 Sq. m



LOCAL AUTHORITY

Wandsworth Borough Council

TENURE

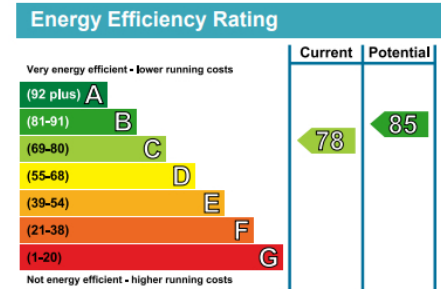
Leasehold

COUNCIL TAX BAND

Band H

VIEWINGS

By prior appointment only



Agents Note: Whilst every care has been taken to prepare these particulars, they are for guidance purposes only. All measurements are approximate and are for general guidance purposes only and whilst every care has been taken to ensure their accuracy, they should not be relied upon and potential buyers/tenants are advised to recheck the measurements



4 Vicentia Court
Bridges Wharf
London
SW11 3GY

02073522455
info@hgproperty.co.uk
www.hgproperty.co.uk