



Horn Lane | W3 |

£525,000

Throughout the development at Horn Lane, there is a great demand for style, design and modernity to create awe-inspiring apartments of the highest order.

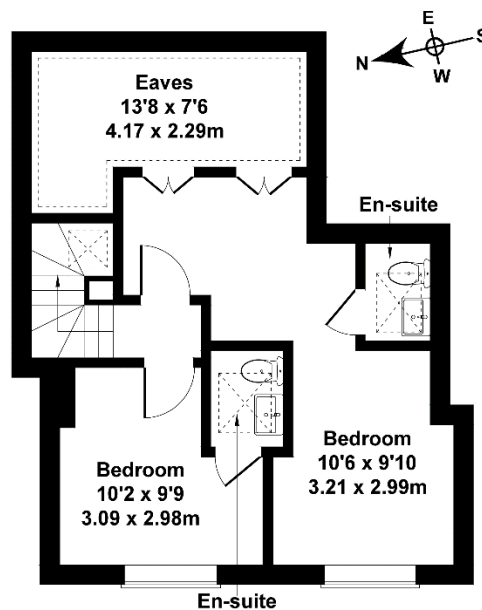
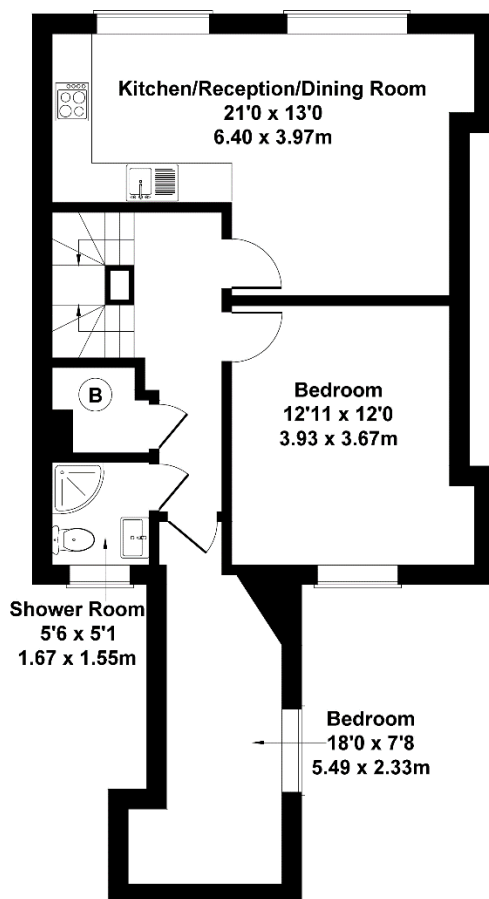
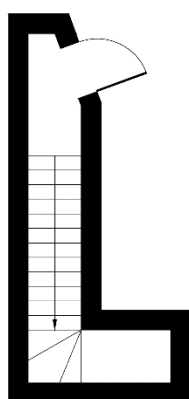
In the hallway and reception room there is high quality wood flooring and carpet leading to each bedroom. High quality joinery in each bedroom provides ample storage solutions.

- Split-level Flat
- Over 1000 sq ft
- Four bedrooms
- Fitted kitchen
- Fitted bathroom
- Long lease
- Close to Crossrail



Horn Lane

Approximate Gross Internal Area
1023 sq ft - 95 sq m



GROUND FLOOR

FIRST FLOOR

SECOND FLOOR

Not to Scale. Produced by The Plan Portal 2022
For Illustrative Purposes Only.

Contact Details

24 Station Parade
Ealing
London
W5 3LD

www.goviewlondon.co.uk
sales@goviewlondon.co.uk
020 8992 0333

Agents Note: Whilst every care has been taken to prepare these sales particulars, they are for guidance purposes only. All measurements are approximate are for general guidance purposes only and whilst every care has been taken to ensure their accuracy, they should not be relied upon and potential buyers are advised to recheck the measurements.