



3 Bedroom Mid Terraced House Knollmead, Tolworth, Surbiton. £435,000 Freehold

We are delighted to offer to the market this 3 bedroom family home with a private garden and Garage.

The front door opens to the entrance hall, leading to a spacious double aspect 22.8 x 9.5 ft

Living/Dining Room with doors opening to the private garden.

Separate Kitchen with a door opening to the rear garden and newly refitted combination boiler.

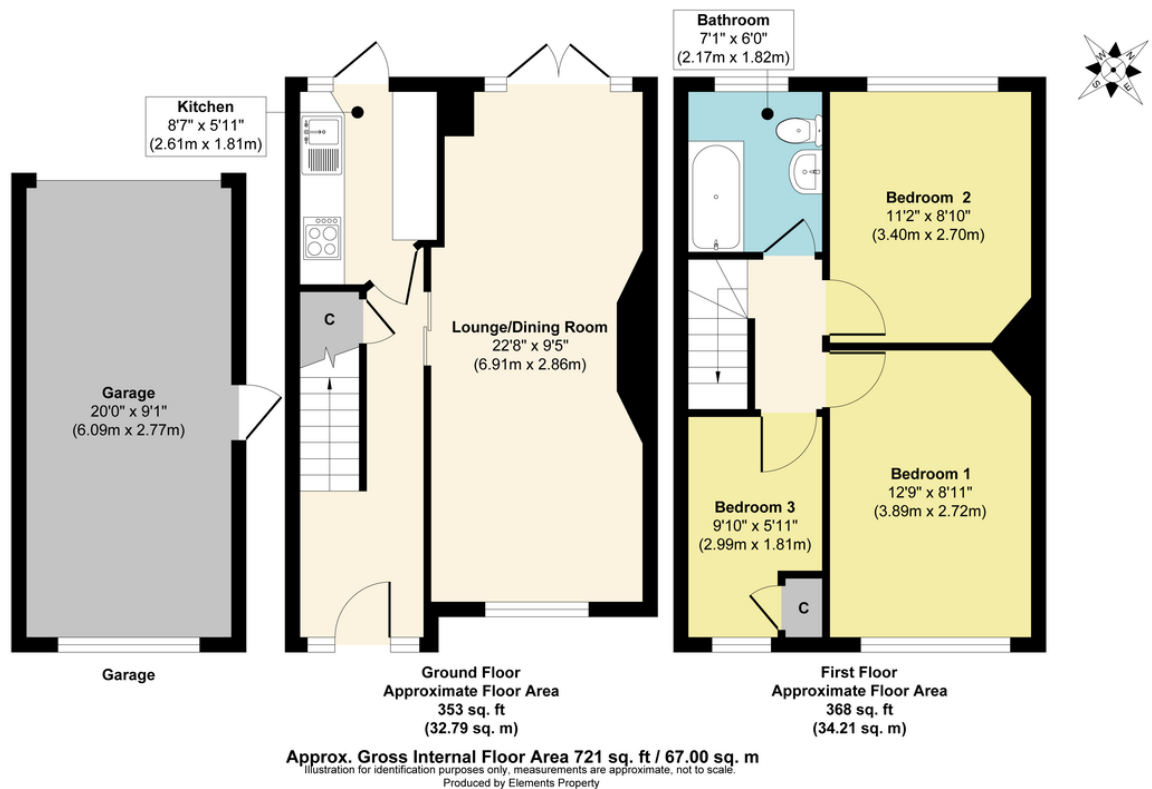
On the first floor, 3 bedrooms and a family bathroom.

The garage is accessed via a slip road to the rear of the property,
and a gate located to the rear of the back garden.

There is a spacious front garden with the potential for off road parking for multiple cars.

Potential to extend subject to planning permission.





- 3 Bedroom Family Home
- Spacious Double Aspect living/dining room
- Kitchen with door opening to the private rear garden
- 721 sq ft of internal living space
- Garage
- Private Rear Garden
- Spacious Private Front Garden
- Potential to extend Subject to Planning Permission
- Council Tax Band D: £2,246.71 per annum