



Beauval Road, SE22
Guide Price £1,800,000

020 8702 8111
pedderproperty.com

pedder



In general

- A very attractive end of terrace Victorian house ideally located for access to Dulwich Village and East Dulwich
- Extended, upgraded and modernised to an extremely high standard
- Four/five bedrooms, three bathrooms
- Large double reception room
- Integrated kitchen open-plan to dining area
- Downstairs cloakroom
- Lovely landscaped rear garden
- Off street parking
- Beautifully presented throughout
- Highly sought after location

In detail

A very attractive end of terrace Victorian house for sale located on this highly sought after residential road in close proximity to both Dulwich Village and East Dulwich.

The property has been extended, upgraded and modernised to an extremely high standard creating a beautifully presented family home. The accommodation is arranged over three floors and comprises on the ground floor a large double reception room, integrated kitchen open-plan to the dining area with bi-fold doors leading out to a lovely landscaped garden. This is also a WC on the ground floor. On the first floor there are three good size double bedrooms, one with en-suite shower room and a family bathroom. The second floor has a shower room and a large double bedroom. (This room can easily be re-instated to two separate bedrooms if required). Externally to the front there is off street parking.

Dulwich Village is easily accessible with numerous boutiques, cafes and restaurants. The popular Dulwich Park, Belair Park and Dulwich Picture Gallery are close by. The property is also well placed for primary and secondary state schools as well as the renowned independent schools including James Allen's Girls School, Alleyn's School and Dulwich College. Lordship Lane is close-by offering a variety of shopping and leisure facilities. Rail links to central London are from East Dulwich (London Bridge), North Dulwich (London Bridge) and Herne Hill (London Victoria and the Thameslink line to London Blackfriars and St Pancras).

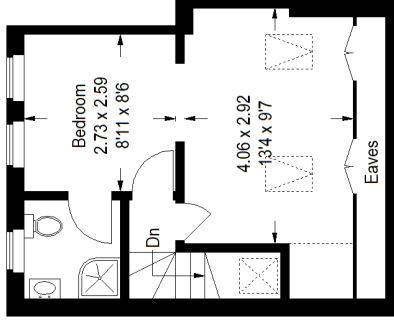
An internal viewing of this stunning family house is advised. EPC: D | Council Tax Band: E



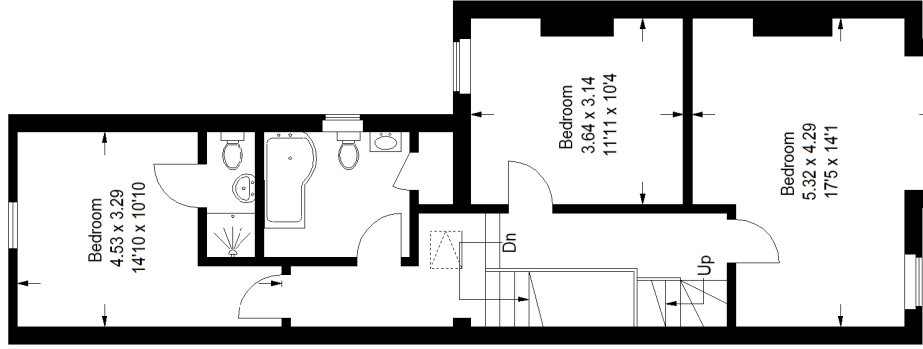
Floorplan

Beauval Road, SE22

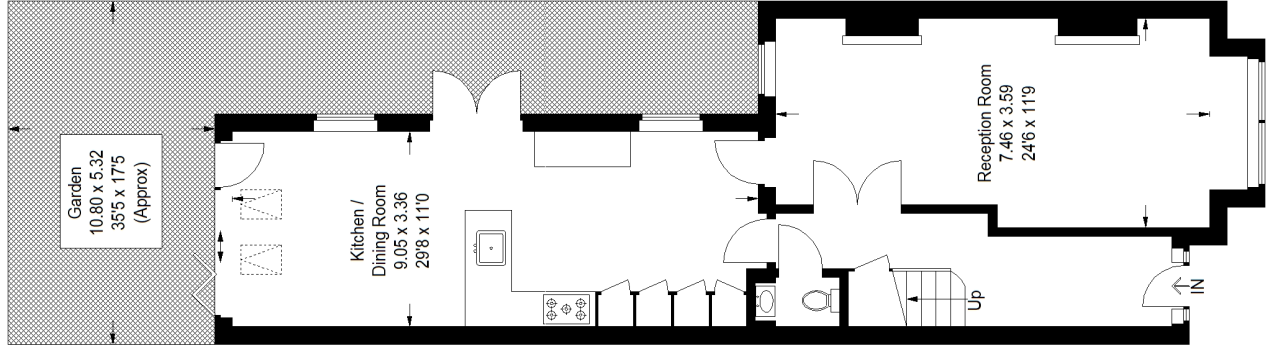
Approximate Gross Internal Area
 Ground Floor = 72.2 sq m / 777 sq ft
 First Floor = 67.1 sq m / 722 sq ft
 Second Floor = 27.2 sq m / 293 sq ft
 (Excluding Eaves)
 Total = 166.5 sq m / 1792 sq ft



Second Floor



First Floor



Ground Floor

= Reduced headroom below 1.5 m / 5'0"

Score	Energy rating	Current	Potential
92+	A		
81-91	B		
69-80	C		77 C
55-68	D	58 D	
39-54	E		
21-38	F		
1-20	G		

Pedder Property Ltd trading as Pedder for themselves and for the vendor/landlord of this property whose agents they are, give notice that (1) these particulars do not constitute any part of an offer or contract, (2) all statements contained within these particulars are made without responsibility on the part of Pedder or the vendor/landlord, (3) whilst made in good faith, none of the statements contained within these particulars are to be relied upon as a statement of representation or fact, (4) any intending purchaser/tenant must satisfy him/herself by inspection or otherwise as to the correctness of each of the statements contained within these particulars, (5) the vendor/landlord does not make or give either Pedder or any person in their employment any authority to make or give representation or warranty whatsoever in relation to this property.

Copyright www.pedderproperty.com © 2023
 These plans are for representation purposes only as defined by RICS - Code of Measuring Practice.
 Not drawn to Scale. Windows and door openings are approximate. Please check all dimensions,
 shapes and compass bearings before making any decisions reliant upon them.