



Fron Heulog offers over £220,000

- Self-Contained Annex
- Semi-Detached
- Sought After Location
- Conservatory
- Two Bedrooms
- EPC Rating: C



 2  1  1



About the property

Located in the sought after area of Cefn Glas in Bridgend, this two bedroom semi-detached property benefits from a Self-Contained one bedroom annex! Just a short drive from Bridgend Town Centre and all local amenities like schools and shops this property also has great transport links via Bridgend Train Station and M4 corridor!!! Internally the property comprises entrance hall, lounge, conservatory, kitchen and access to annex. Within the annex there is a bedroom, shower room and kitchen/living space. To the first floor are two bedrooms and a bathroom. To the rear of the property is an enclosed low maintenance corner plot garden. Viewings are highly recommended for this property. To book call 01656657201 or book via our website www.peteralan.co.uk

Accommodation

Entrance Hall

Enter via uPVC door. Access to lounge and kitchen. Stairs to first floor. Fitted carpet.

Lounge

10' 9" max x 20' 9" max (3.28m max x 6.32m max)

Fitted carpet. uPVC window. Access to conservatory.

Conservatory

Tiles. uPVC windows and door to garden.

Kitchen

11' 9" x 7' 4" (3.58m x 2.24m)



Fitted with matching wall and base units with worktop space over. Insert stainless steel sink with mixer tap. Space for all appliances. Tiles. uPVC window. Storage cupboard/pantry. Access to annex.

Bathroom

Fitted with three piece suite comprising of shower, wash hand basin and wc. Tiles. Spotlights. uPVC window.

Landing

Access to bedrooms and bathroom. Fitted carpet. uPVC window.

Annex

Bedroom Three

8' 7" x 9' 4" (2.62m x 2.84m)

Fitted carpet. uPVC window.

Master Bedroom

9' 8" plus recess x 15' 1" max (2.95m plus recess x 4.60m max)

Fitted carpet. Fitted wardrobe. Built in cupboard.

Ensuite

Fitted with a three piece suite comprising shower, wash hand basin and wc. uPVC window.

Bedroom Two

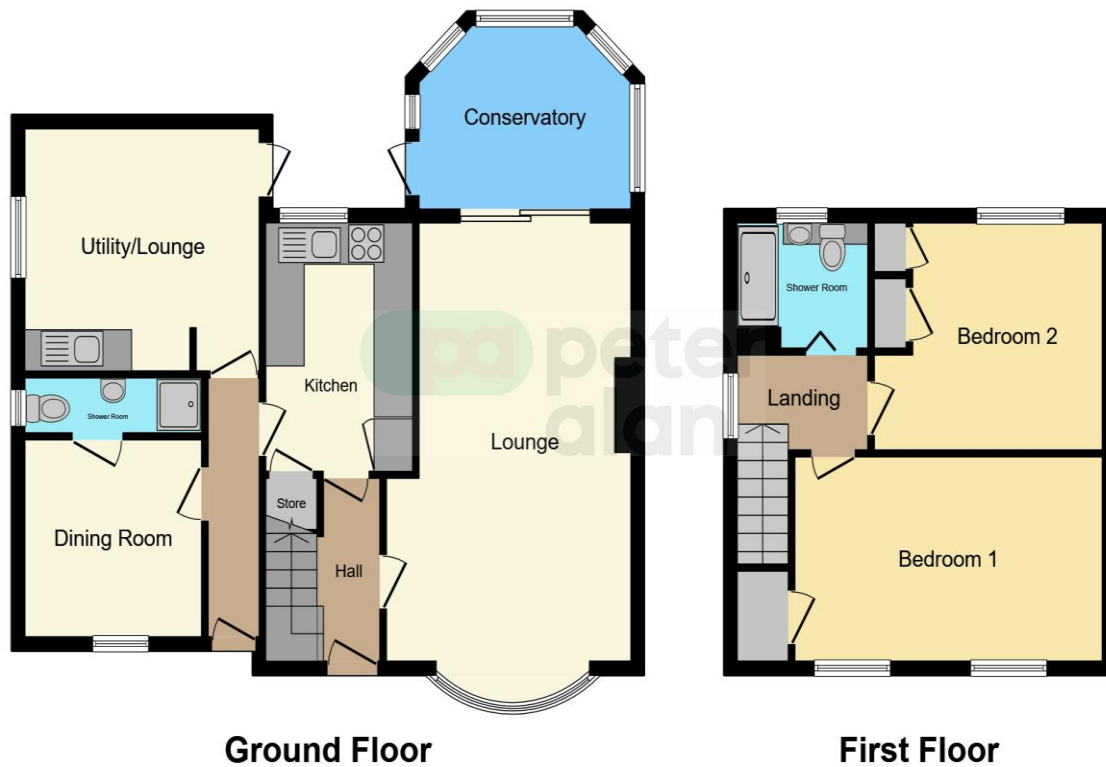
11' 7" max x 10' 9" max (3.53m max x 3.28m max)

Laminate flooring. uPVC window. Storage cupboards.

Kitchen

Fitted with matching wall and base units with worktop space over. Insert stainless steel sink with mixer tap. Space for fridge/freezer and washing machine/dryer.

Floorplan



This floorplan is for illustrative purposes only and is not drawn to scale. Measurements, floor-areas, openings and orientations are approximate. They should not be relied upon for any purpose and do not form any part of an agreement. No liability is taken for any error or mis-statement. All parties must rely on their own inspections.

Important Information

Note while we endeavour to make our sales details accurate and reliable, if there is any point which is of particular interest to you, please contact the office and we will be pleased to confirm the position for you. We have not personally tested any apparatus, equipment, fixtures, fittings or services and cannot verify they are in working order or fit for their purposes. Nothing in these particulars is intended to indicate that carpets or curtains, furnishings or fittings, electrical goods (whether wired or not). Gas fires or light fittings or any other fixtures not expressly included form part of the property offered for sale. This computer generated Floorplan, if applicable, is intended as a general guide to the layout and design of the property. It is not to scale and should not be relied upon for dimensions. Tenure: We cannot confirm the tenure of the property as we have not had access to the legal documents. The buyer is advised to obtain verification from their solicitor or surveyor.

Peter Alan Limited is registered in England and Wales under company number 2073153, Registered Office is Cumbria House, 16-20 Hockliffe Street, Leighton Buzzard, Bedfordshire, LU7 1GN. VAT Registration Number is 500 2481 05. For activities relating to regulated mortgages and non-investment insurance contracts, Peter Alan Limited is an appointed representative of Connells Limited which is authorised and regulated by the Financial Conduct Authority. Connells Limited's Financial Services Register number is 302221. Most buy-to-let