



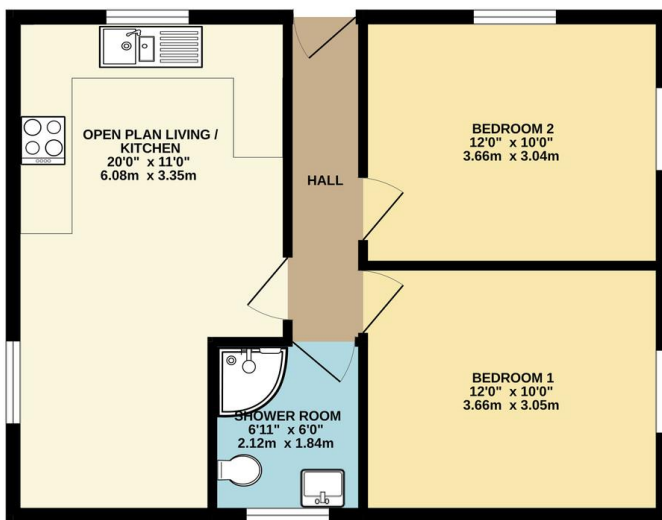
FOR SALE

2 Bed Detached Bungalow in Glebe Close, Wigston LE18 3LU
£220,000

Offered with no upward chain this modern two bedroom detached purpose built bungalow is located in a quiet courtyard and situated in Wigston. The accommodation comprises of open plan living space and kitchen, two bedrooms, shower room, off road parking with shared driveway access. The property is currently tenanted and can be purchased as an ongoing concern or offered with vacant possession. Contact Phillips George for more information.



GROUND FLOOR
519 sq.ft. (48.2 sq.m.) approx.



TOTAL FLOOR AREA: 519 sq.ft. (48.2 sq.m.) approx.
Whilst every attempt has been made to ensure the accuracy of the floorplan contained here, measurements of doors, windows, stairs and any other space are approximate and no responsibility is taken for any error, omission or mis-statement. This plan is for illustrative purposes only and should be used as such by any prospective purchaser. The services, systems and appliances shown have not been tested and no guarantee as to their operability or efficiency can be given.
Made with Metstep C2024

Energy Efficiency Rating		Current	Potential
Very energy efficient - lower running costs			
(92-100)	A		98
(81-91)	B		81
(69-80)	C		
(55-68)	D		
(39-54)	E		
(21-38)	F		
(1-20)	G		
Not energy efficient - higher running costs			
England, Scotland & Wales		EU Directive 2002/91/EC	

- Modern Build
- Detached Bungalow
- Two Bedrooms
- Underfloor Heating
- Courtyard Location
- No Chain
- Off Road Parking
- Ongoing Concern With Tenant

Agents Note: Whilst every care has been taken to prepare these sales particulars, they are for guidance purposes only. All measurements are approximate and for general guidance purposes only and whilst every care has been taken to ensure their accuracy, they should not be relied upon and potential buyers are advised to recheck the measurements.

