



BRITISH
PROPERTY
AWARDS

2020 - 2021

★★★★★

GOLD WINNER

LETTING AGENT
IN LEIGH-ON-SEA



BRITISH
PROPERTY
AWARDS

2018-2019

★★★★★

GOLD WINNER

LETTING AGENT
IN LEIGH-ON-SEA



BRITISH
PROPERTY
AWARDS

2017

★★★★★

GOLD WINNER

ESTATE AGENT
IN LEIGH-ON-SEA



Glendale Mews, Leigh on sea

A SHORT WALK TO THE STATION: Castle Estate Agents are pleased to offer FOR SALE this 2nd floor 1 bedroom REFURBISHED apartment set in this fantastic position very close to LEIGH STATION, BROADWAY, SEA FRONT, bars, restaurants and all bus routes, this property benefits from a South facing balcony.

- One bedroom
- Balcony
- Communal parking
- Walk to the Station
- New kitchen
- Second floor
- South facing
- Refurbished
- Walk to the Broadway
- New Bathroom

£235,000 Leasehold

Front aspect

Communal gardens, arch to communal parking, Hardwood door with entry phone system to stairs leading to 2nd floor and hardwood own front door.

Inner hallway

New doors to all rooms, entry phone system, telephone point, new flooring.

Lounge 13'4" by 9'7" (4m 6cm x 2m 92cm) Max

Hardwood double glazed sliding patio doors to large balcony, tv point, power points, coving, down lighters, new flooring with under floor heating.

New Kitchen 11'4" by 5'5" (3m 45cm x 1m 65cm) Max

White high gloss eye level and base level units, roll top work surfaces, stainless steel sink and single drainer with mixer taps, hardwood double glazed window to the rear aspect, space for fridge freezer, washing machine and new 4 ring ceramic hob, under oven and over extractor fan, tiled splash backs, power points, down lighters, new flooring with under floor heating.

Bedroom 9'6" by 9'6" (2m 90cm x 2m 90cm) Max

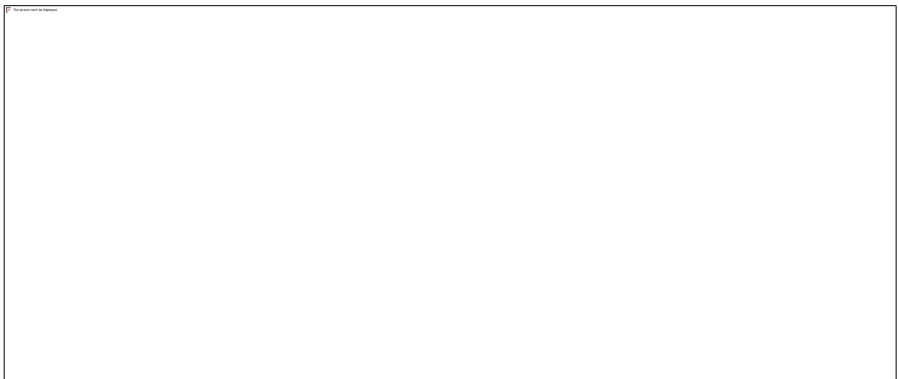
Fitted wardrobes, 2 x hardwood double glazed sash windows to the front aspect, coving, power points, telephone point, new flooring with under floor heating.

New Bathroom

3 Piece suite comprising of a low level flush toilet, hand wash basin in vanity unit with mixer taps and panel enclosed bath with mixer taps and over wall mounted electric shower, tiled splash backs, extractor fan, new flooring.

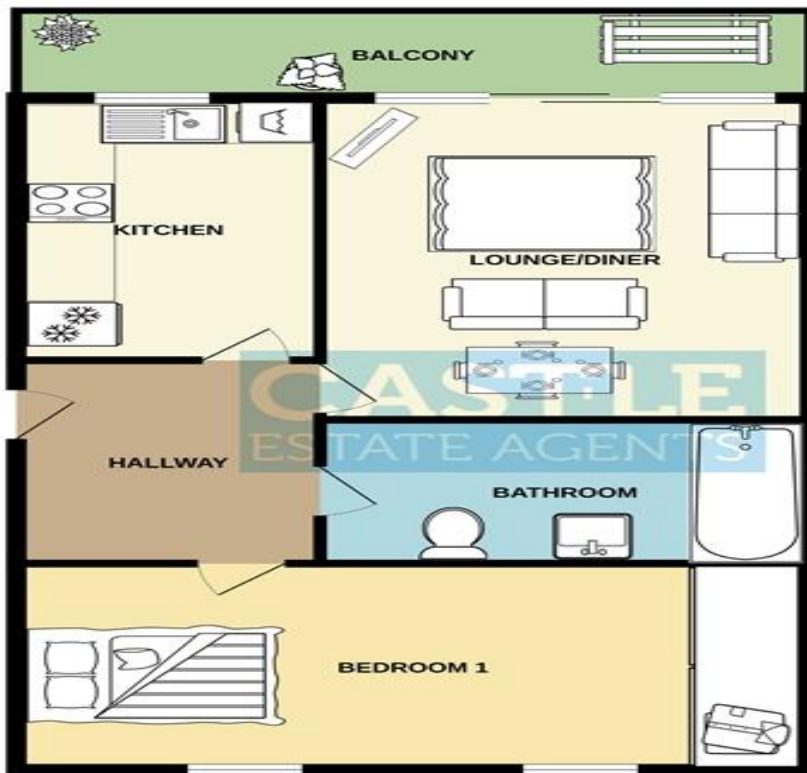


Whilst we endeavour to make our sales particulars as accurate and reliable as possible, if there is any point which is of particular importance to you, please contact the office and we will be pleased to check the information. The mention of any appliances and/or services in these details does not imply that these are in full and efficient working order or have been inspected by ourselves. Please be advised that some of the particulars may be awaiting vendor approval. Please contact us should you have any queries and we will try our utmost to assist.



Whilst we endeavour to make our sales particulars as accurate and reliable as possible, if there is any point which is of particular importance to you, please contact the office and we will be pleased to check the information. The mention of any appliances and/or services in these details does not imply that these are in full and efficient working order or have been inspected by ourselves. Please be advised that some of the particulars may be awaiting vendor approval. Please contact us should you have any queries and we will try our utmost to assist.

2ND FLOOR



Whilst every attempt has been made to ensure the accuracy of the floorplan contained here, measurements of doors, windows, rooms and any other items are approximate and no responsibility is taken for any error, omission or mis-statement. This plan is for illustrative purposes only and should be used as such by any prospective purchaser. The services, systems and appliances shown have not been tested and no guarantee as to their operability or efficiency can be given.
Made with Metropix ©2024

Whilst we endeavour to make our sales particulars as accurate and reliable as possible, if there is any point which is of particular importance to you, please contact the office and we will be pleased to check the information. The mention of any appliances and/or services in these details does not imply that these are in full and efficient working order or have been inspected by ourselves. Please be advised that some of the particulars may be awaiting vendor approval. Please contact us should you have any queries and we will try our utmost to assist.