

Head Office:
Dixon Kelley Estate Agents
1 Penn Court
Station Road, West Moors
Dorset. BH22 0JJ

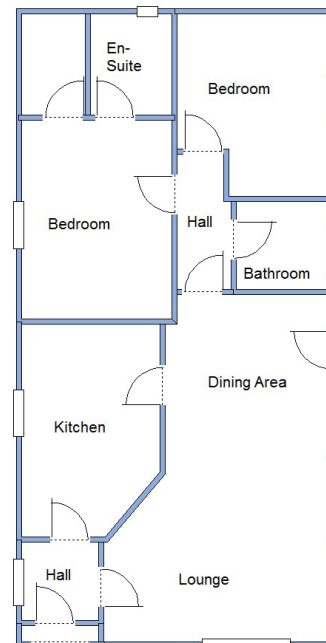
DORSET PARK HOMES

DRAFT

www.dorsetparkhomes.com

Telephone: 01202 877511

12a Dewlands Park, West Close, Verwood, Dorset. BH31 6PR



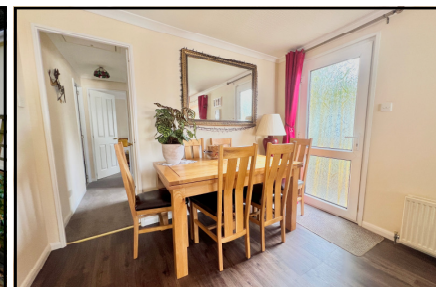
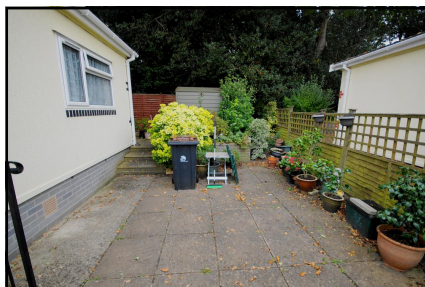
This drawing has been prepared for diagrammatic purpose only. Not to scale

2 Bedroom Park Home approx 40' x 20'

Accommodation & approximate room dimensions:

- Homeseeker circa 2000
- Entrance Hall
- Kitchen: approx 13'5" x 8'9" max. Range of floor and wall cupboards. Built-in oven and hob with cooker hood over (untested). Space for tall fridge/freezer. Plumbing for washing machine & dishwasher. Cupboard housing Worcester boiler.
- Lounge/Dining Area: approx 21'8" x 14'3" max. Feature fireplace. Bay window & door to garden.
- Inner Hall: Hatch to roof space.
- Bedroom 1: approx 12'9" x 9'6" Plus Walk-in wardrobe.
- En-Suite Shower Room
- Bedroom 2: approx 11'8" x 9'8" max. Built-in wardrobes and dresser unit.
- Bathroom: Panelled bath, wash basin & WC
- PVCu Double Glazing
- Gas Central Heating (system untested)
- Patio Garden with Metal Shed.
- Parking on Plot
- Age Restriction 50+ Pets Considered

Spacious Home



Pitch Fee: approx £210.04 per month

Subject to Annual Review

Council Tax Band: 'A'

Tenure: 1983 Mobile Homes Act Agreement

Price £199,950

VIEWING STRICTLY BY APPOINTMENT WITH THE VENDOR'S AGENT Dorset Park Homes 01202 877511

IMPORTANT NOTE: These particulars are believed to be correct but their accuracy is not guaranteed. They do not form part of any contract. Nothing in these particulars shall be deemed to be a statement that the property is in good structural condition or otherwise, nor that any of the services, appliances, equipment or facilities are in good working order or have been tested. Purchasers should satisfy themselves on such matters prior to purchase Ref.W04845

The recommended specialist in Park Home sales
Proprietor: Simon Dixon

