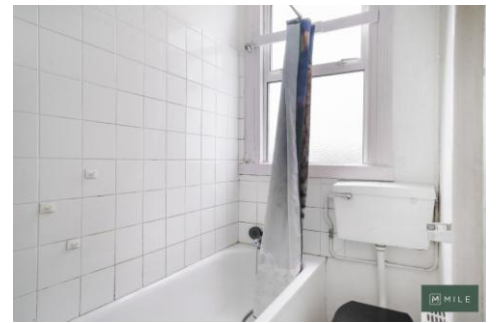




MILE



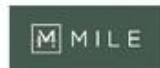
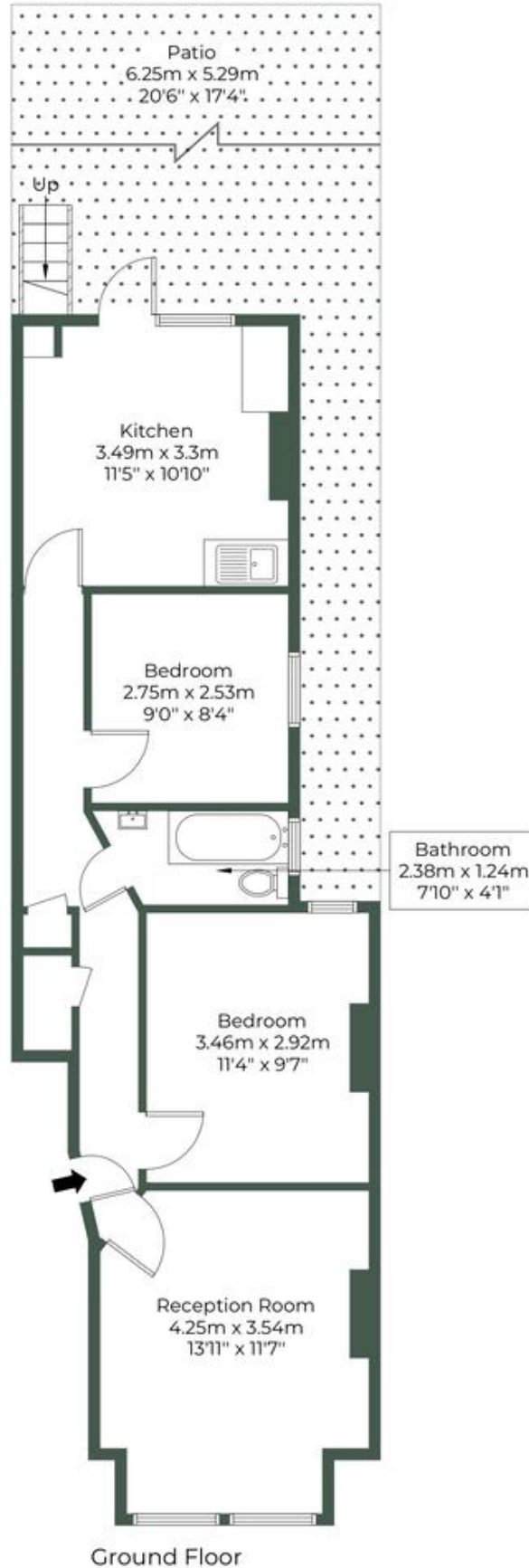
Grange Road, London NW10 £420,000 Share of Freehold

Welcome to Grange Road. Discover this charming two-bedroom, ground-floor garden apartment located on a peaceful residential road in the heart of Willesden Green. Offered chain-free and with a share of the freehold, this property presents a fantastic opportunity for buyers seeking a home with excellent potential to modernize and make their own. The apartment features a bright and spacious reception room with characterful bay windows, two well-proportioned bedrooms, and a three-piece bathroom. The kitchen diner flows seamlessly into the kitchen area, offering direct access to the garden-ideal for outdoor dining, entertaining, or simply relaxing in your own green space. Spanning 607 square feet, the property provides a solid foundation to create your dream home. Willesden Green is a highly sought-after area, celebrated for its vibrant community feel and excellent transport links. With the Jubilee Line at Willesden Green Station just a short walk away, commuting into Central London is a breeze. The neighbourhood also boasts an array of independent cafes, restaurants, and shops, along with green spaces such as Gladstone Park, perfect for leisurely strolls or weekend activities. This property is an excellent investment for first-time buyers, downsizers, or those looking to add value to a home in a fantastic location. Don't miss this opportunity-schedule your viewing today!

- Period property
- Chain free
- Share of Freehold
- Modernisation required
- Two bedrooms
- Good location
- 607 sq ft
- Garden
- Quiet residential road
- Close to shops and transport

GRANGE ROAD, NW10 2QU

Approximate Gross Internal Area = 56.4 sq.m / 607 sq.ft



MONEY LAUNDERING REGULATIONS 2003: Intending purchasers will be asked to produce identification documentation at a later stage and we would ask for your co-operation in order that there will be no delay in agreeing the sale.

General: While we endeavour to make our sales particulars fair, accurate and reliable, they are only a general guide to the property and, accordingly, if there is any point which is of particular importance to you, please contact the office and we will be pleased to check the position for you, especially if you are contemplating travelling some distance to view the property.

Measurements: These approximate room sizes are only intended as general guidance. You must verify the dimensions carefully before ordering carpets or any built-in furniture.

Services: Please note we have not tested the services or any of the equipment or appliances in this property, accordingly we strongly advise prospective buyers to commission their own survey or service reports before finalising their offer to purchase.