



3 Bedroom 2 bath Apartment / Flat,
George Street, Marylebone, London

<https://qinvestments.london>



Luxury 3 Serviced Bedroom Apartment in Marylebone, London. Located 2 minutes walk from Selfridges in the quiet prestigious street.

- **Virtual Visit available**
- **Video walkthrough available**
- **Furnished with luxury furniture**
- **High Ceilings**
- **Big Windows**
- **Additional Attic**
- **Company Lets Allowed**

George Street, Marylebone, London

Luxury 3 Bed Apartment in Montagu Square in Marylebone, London. This is a very prestigious location close to Selfridges.

*Virtual Visit available

*Video walkthrough available

Please call or WhatsApp for availability +447985487333

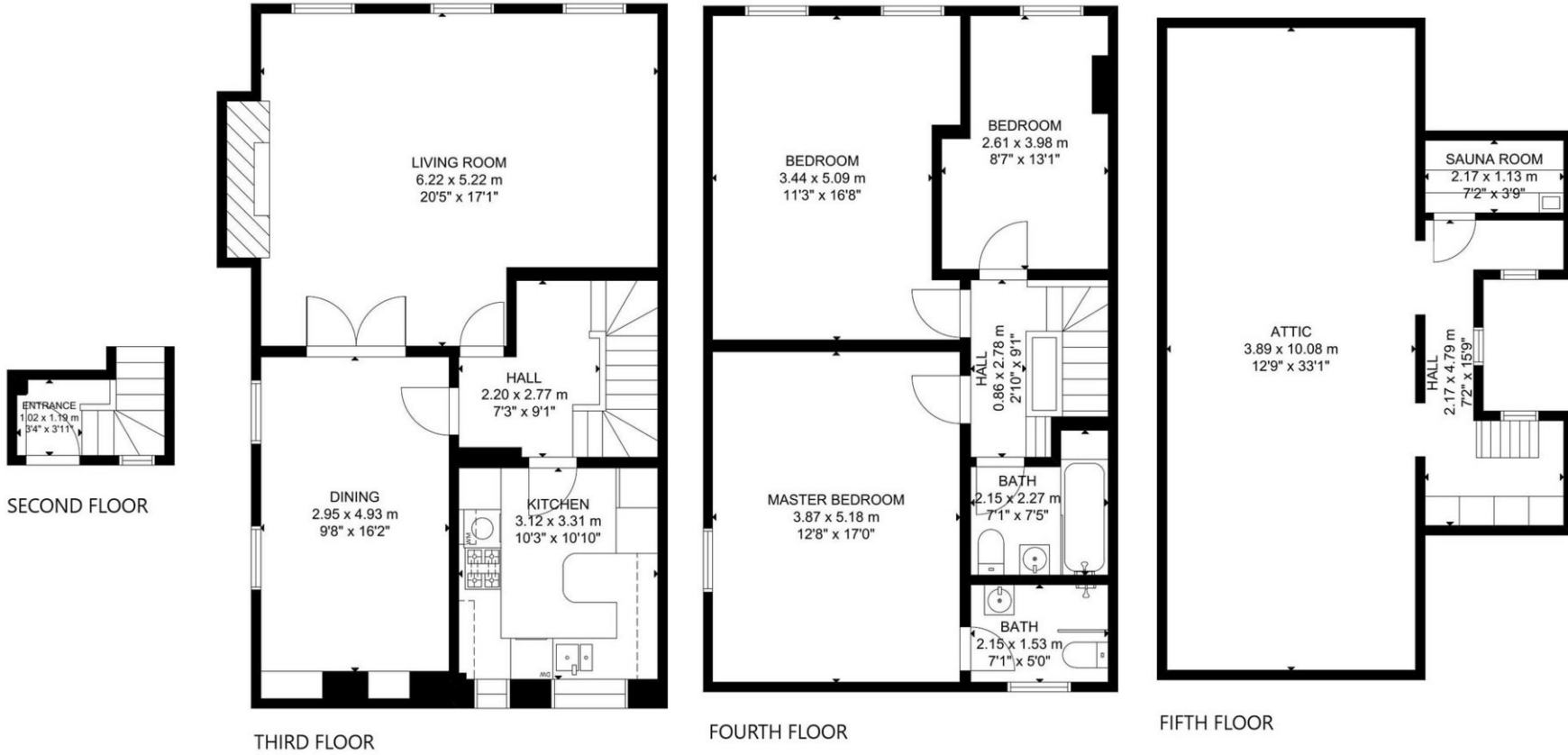
Available now, covering 1,985 square feet. in living space and situated on the 3rd, 4th & 5th floors, this modern property is currently furnished and comes with big windows, high ceilings, and ample storage. The property also benefits from very spacious rooms, wooden floors, and plenty of natural light throughout. Further features and amenities a separate, eat-in kitchen with dishwasher, freezer and washer/dryer.

The flat has a current EPC rating of D. Located on a quiet street with access to Montagu Square Private Garden, the property is located just a short stroll from Marble Arch, Edgware Road and Bond St Tube stations, and only moments away from Hyde Park.

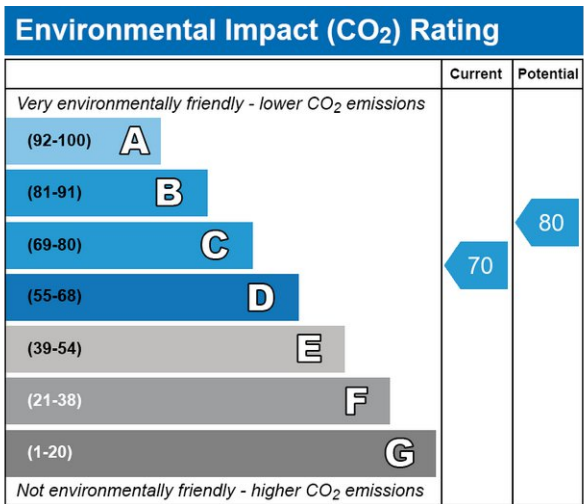
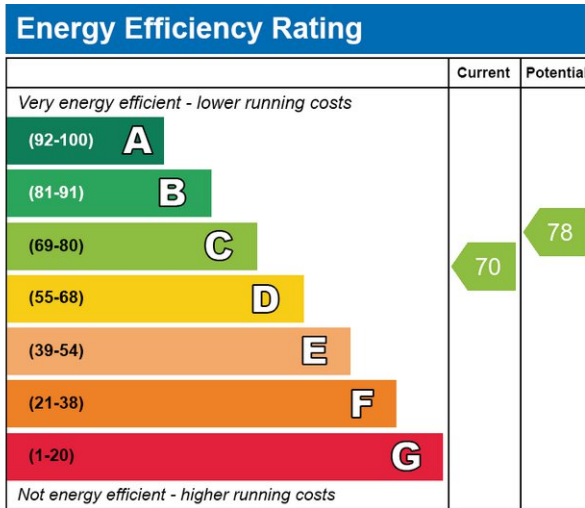
One of the delights about living in Marylebone, is that both Hyde Park and Regents park are so close. Commuting is easy and almost every Underground Line is within walking distance, nearby Stations include, Bond Street, Baker Street, Marylebone, Marble Arch and Edgware Road. I can be at my desk in the city in about 20 minutes.

Montagu Square has been home to some famous residents in the past including Ringo Starr, Jimmi Hendrix, John Lennon and Yoko Ono.

Please call or WhatsApp for availability +447985487333



GROSS INTERNAL AREA
 TOTAL: 185 m²/1,985 sq ft
 FIRST FLOOR: 3 m²/34 sq ft, SECOND FLOOR: 67 m²/717 sq ft
 THIRD FLOOR: 65 m²/697 sq ft, FOURTH FLOOR: 50 m²/537 sq ft
 SIZE AND DIMENSIONS ARE APPROXIMATE, ACTUAL MAY VARY.



CONTACT US

Have a question for us? Please get in touch.

Q INVESTMENTS INTERNATIONAL LTD

T: +44 (0) 7985 487333

E: office@qinvestments.london

INVESTMENTS, REAL ESTATE & LIFESTYLE

Stay connected

Please visit our social media pages.

You can now find us on [Facebook](#), [Twitter](#), [Linkedin](#) and [Instagram](#) and many more!